

# PARTS LIST

*Rockford*



**MODELS BS-7S, BS-7D**

ROCKFORD MOTORS, INC. • Rockford, Illinois

THE UNIVERSITY OF CHICAGO

PHYSICS DEPARTMENT

PHYSICS 311

ROCKFORD

PARTS LIST

MODELS BS-7D, BS-7S

(DELUXE MODEL & STANDARD MODEL)

# CONTENTS

	Page
Frame	3
Front Fork	4
Handle, Rear View Mirror	5
Rear Swing Arm, Chain Case	6
Foot Rest, Stand, Brake Pedal	7
Front Wheel	9
Rear Wheel	11
Speedometer, Cable	12
Fuel Tank	13
Turn Signal, Grip Assembly	15
Head Light, Tail Light	17
Battery, Switch, Horn, Lead Wire	19
Cylinder, Crank Case	20
Transmission Case	21
Crank Case	22
Crank Shaft, Piston	23
Clutch	24
Transmission	25
Gear Shift	26
Muffler, Seat Assembly	27
Kick Starter	28
Cover, Air Cleaner	29
Carburetor	31
Cell Dynamo	33
Flywheel Magneto	34
Standard Tool	35
Index, Notes, Glossary	36-38

## INSTRUCTIONS FOR USING THE PARTS LIST

This parts list covers ROCKFORD Models BS-7S & BS-7D Sportsters, manual and electric starter models.

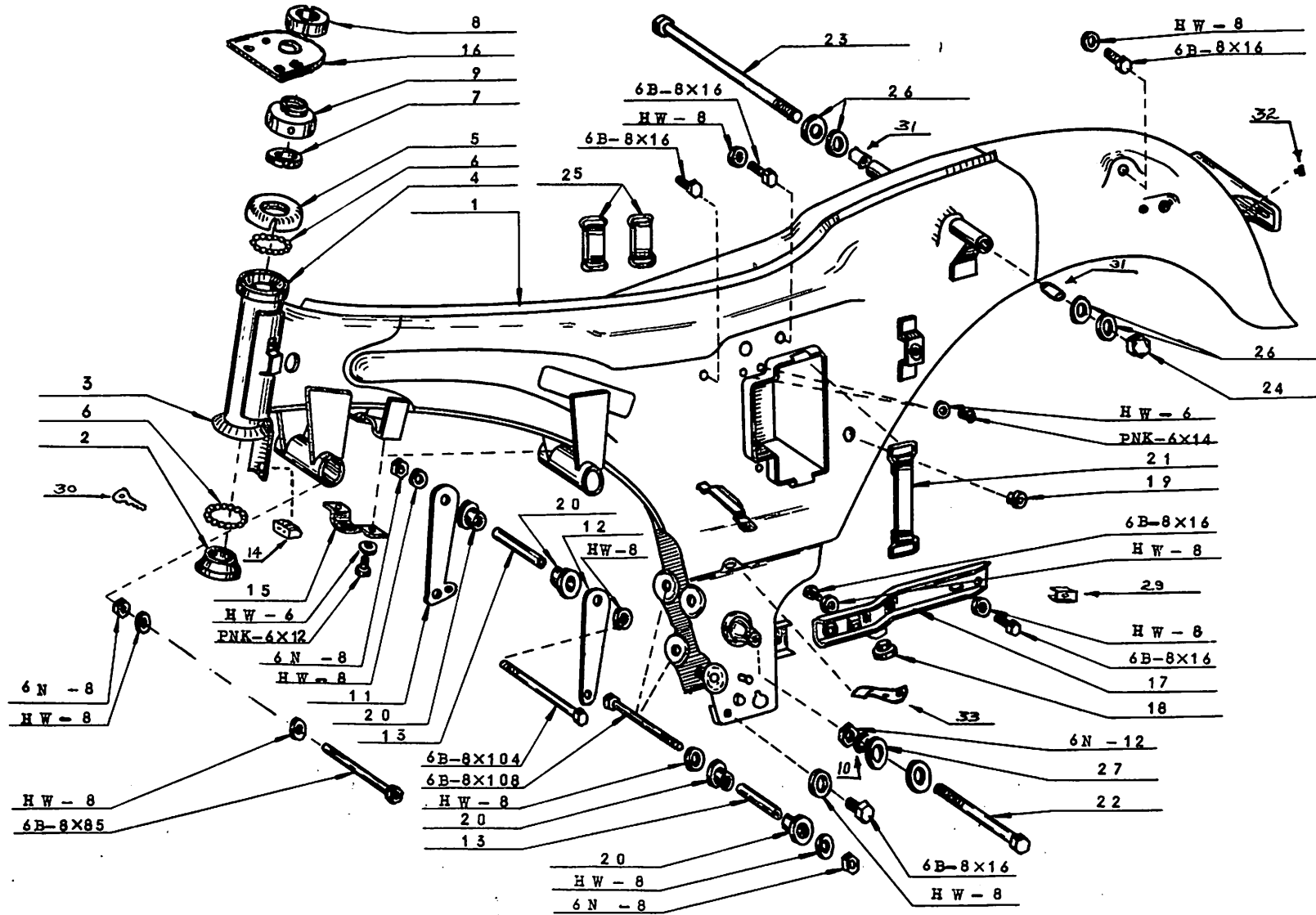
Please note the following points when placing orders:

- (1) Parts numbers preceded by prefix M indicate that the parts belong to the body group.  
Parts numbers preceded by prefix E indicate that the parts belong to the engine group.
- (2) "Assembly" parts consist of parts indicated in the REMARKS column.

### EXPLANATORY NOTES

1. Parts that can be used for both Standard and Deluxe models are indicated with two symbols (°) under the "interchangeability" column.
2. Parts marked with the symbol "o" in the "D" column indicate that they are exclusively used for the Deluxe model and cannot be used on the Standard model (kick starter).
3. Parts marked with the symbol in the "S" column indicate that they are used on the Standard model only.
4. The symbol "\*" means the parts color must be specified when ordering.

(2)



- 8
- 16
- 9
- 7
- 5
- 4
- 4
- 1

- 6B-8X16
- HW-8
- 6B-8X16

- HW-8
- 6B-8X16

- 3
- 6
- 2

- HW-6
- PNK-6X12
- 6N-8
- HW-8

- 6N-8
- HW-8

- HW-8
- 6B-8X85

- 6B-8X104
- 6B-8X108
- HW-8
- 20
- 13

- 20
- HW-8
- 6N-8

- 12
- HW-8

- 23
- 26
- 31

- 25

- 32

- HW-6
- PNK-6X14

- 21
- 19

- 6B-8X16
- HW-8

- 29

- HW-8
- 6B-8X16

- 17
- 18

- 6N-12

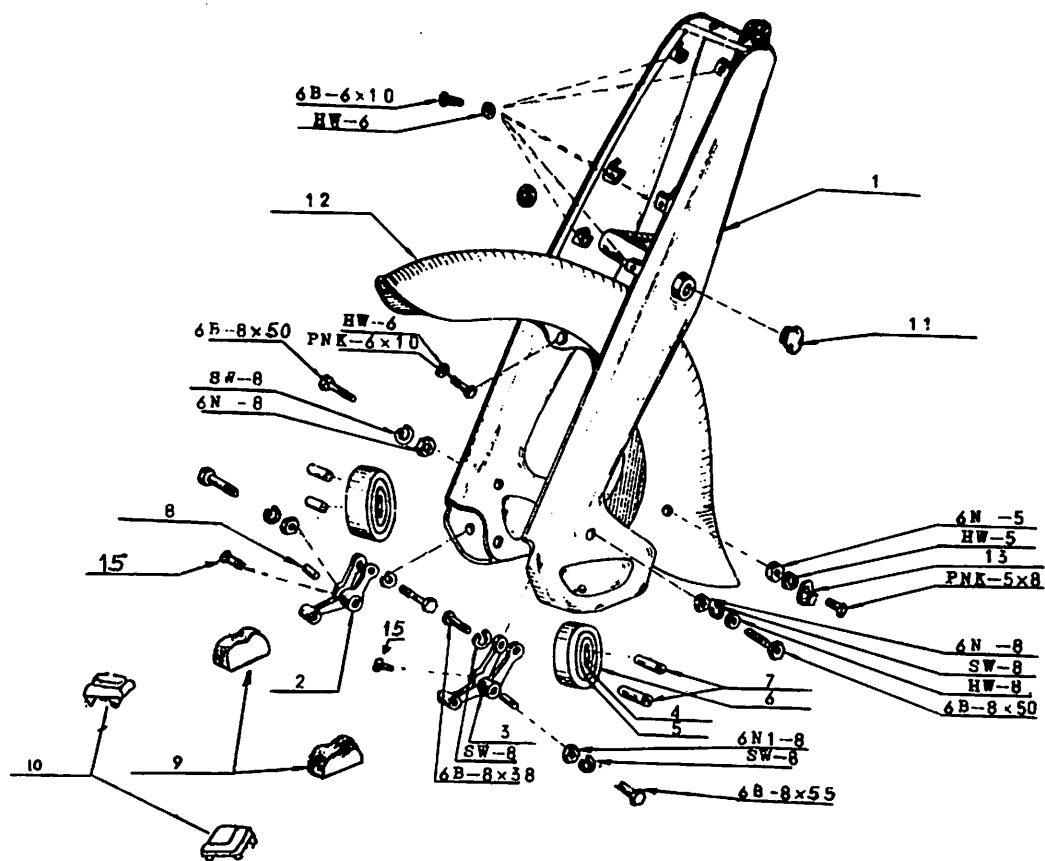
- 27

- 22

- 6B-8X16
- HW-8

FRAME

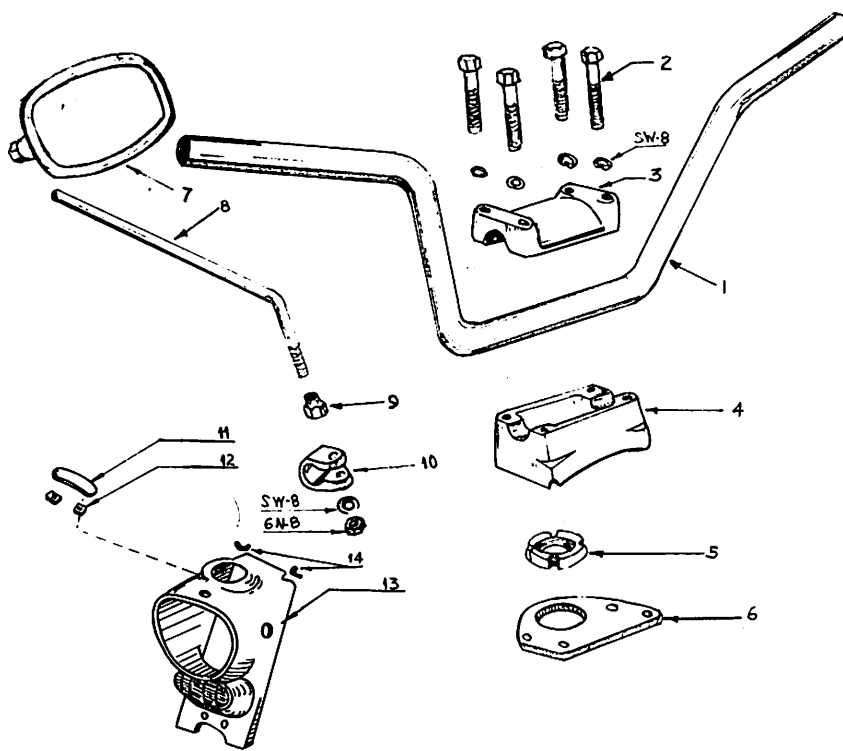
INDEX NO.	PARTS NO.	PARTS NAME	UNIT	INTERCHANGE-ABILITY		REMARKS
				D	S	
1	3110-3002	Frame	1	o		With inner race (upper) outer race (lower)
	3110-3040	Frame	1		o	" "
2	3315-3000	Inner race (lower)	1	o	o	
3	3311-3200	Outer race (lower)	1	o	o	
4	3312-3001	Inner race (upper)	1	o	o	
5	3314-3000	Outer race (upper)	1	o	o	
6	0611-0316	Ball (3/16")	45	o	o	
7	3321-3000	Lock nut (head tube)	1	o	o	
8	3323-3000	Head nut	1	o	o	
9	3322-3001	Adjusting nut (head tube)	1	o	o	
10	3423-3001	Lock washer (3)	1	o	o	Rear frame t=2.3
11	3372-3001	Engine hanger (R)	1	o	o	
12	3371-3001	Engine hanger (L)	1	o	o	
13	3368-3001	Collar (mounting)	3	o	o	
14	3433-3001	Steering lock	1	o	o	#611, #612, #613, #614
15	3384-3000	Holder (coil)	1	o		
16	4281-3000	Bracket (handle)	1	o	o	
17	3334-3003	Bracket (muffler)	1	o	o	
18	3335-3000	Rubber stopper	1	o	o	
19	3412-3000	Grommet (Frame)	1	o	o	
20	3367-3000	Mounting rubber	6	o	o	Engine 6
21	3353-3001	Battery band	1	o		Only for De Luxe
	3353-3011	Battery band	1		o	Only for Standard
22	3414-3003	12 x 233mm bolt	1	o	o	Rear frame
23	3415-3004	12 x 245mm bolt	1	o	o	Rear cushion
24	09525-101	Cap nut (12mm.)	1	o	o	Rear cushion
25	3354-3001	Tool band	2	o	o	With hooks
26	09541-101	Washer (12mm)	4	o	o	Rear cushion 4
27	09541-102	Washer (A)	2	o	o	Rear frame t=1.2
28	09525-102	Cap nut (8 mm.)	1	o	o	
29	3411-3000	Spacer	1	o	o	
30	3434-3012	Key (steering lock)	1	o	o	#611, #612, #613, #614
31	3387-3010	Seat collar (B)	2	o	o	
32	3425-3000	Grommet (stop light)	1	o	o	
33	3441-3001	Clamp (stiffner)	1	o	o	



FRONT FORK

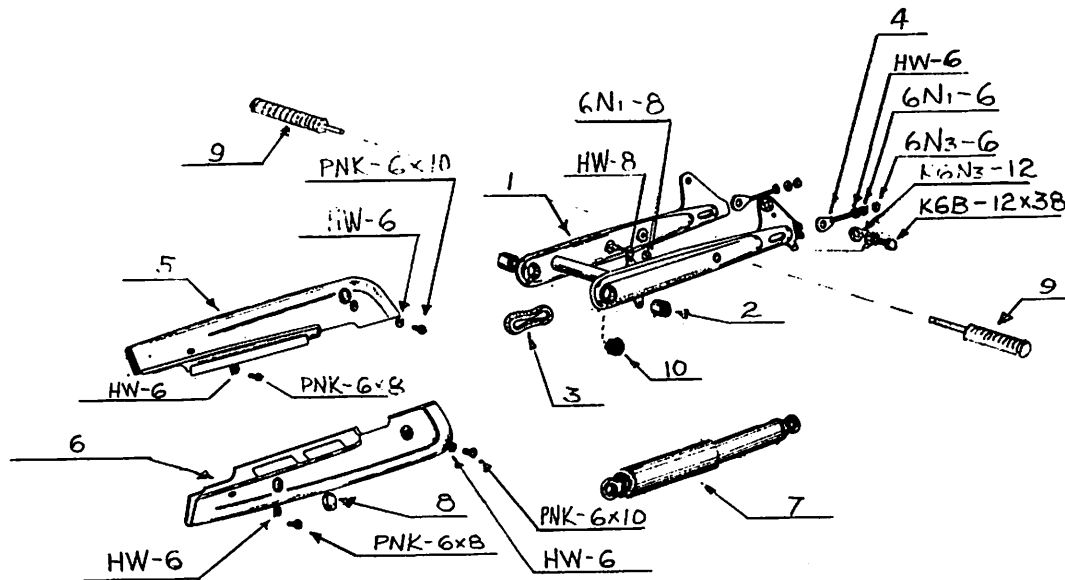
INDEX NO.	PARTS NO.	PARTS NAME	UNIT	INTERCHANGE-		REMARKS
				ABILITY	D S	
1	4100-3010 4100 3010	Front fork assembly Front fork	1 1	○	○	With cap (front fork)
2	4230-3001	Bottom link (R)	1	○	○	
3	4220-3001	Bottom link (L)	1	○	○	
4	4241-3001	Rubber ring (inner)	2	○	○	
5	4242-3001	Rubber ring (center)	2	○	○	
6	4243-3001	Rubber ring (outer)	2	○	○	
7	4253-3000	Collar (B) (rubber bush)	4	○	○	
8	4252-3000	Collar (A) (bottom link)	4	○	○	
9	4254-3003	Rubber stopper (bottom link)	2	○	○	
10	4255-3000	Rubber stopper (A)	2	○	○	
11	4286-3000	Cap (front fork)	2	○	○	
12	4411-3000	Mud guard (front)	1	○	○	
13	4431-3000	Wire clamp	2	○	○	
14	4251-3000	Rubber bushing (bottom link)	4	○	○	
15	4224-3000	Grease nipple (bottom link)	2 2	○	○	





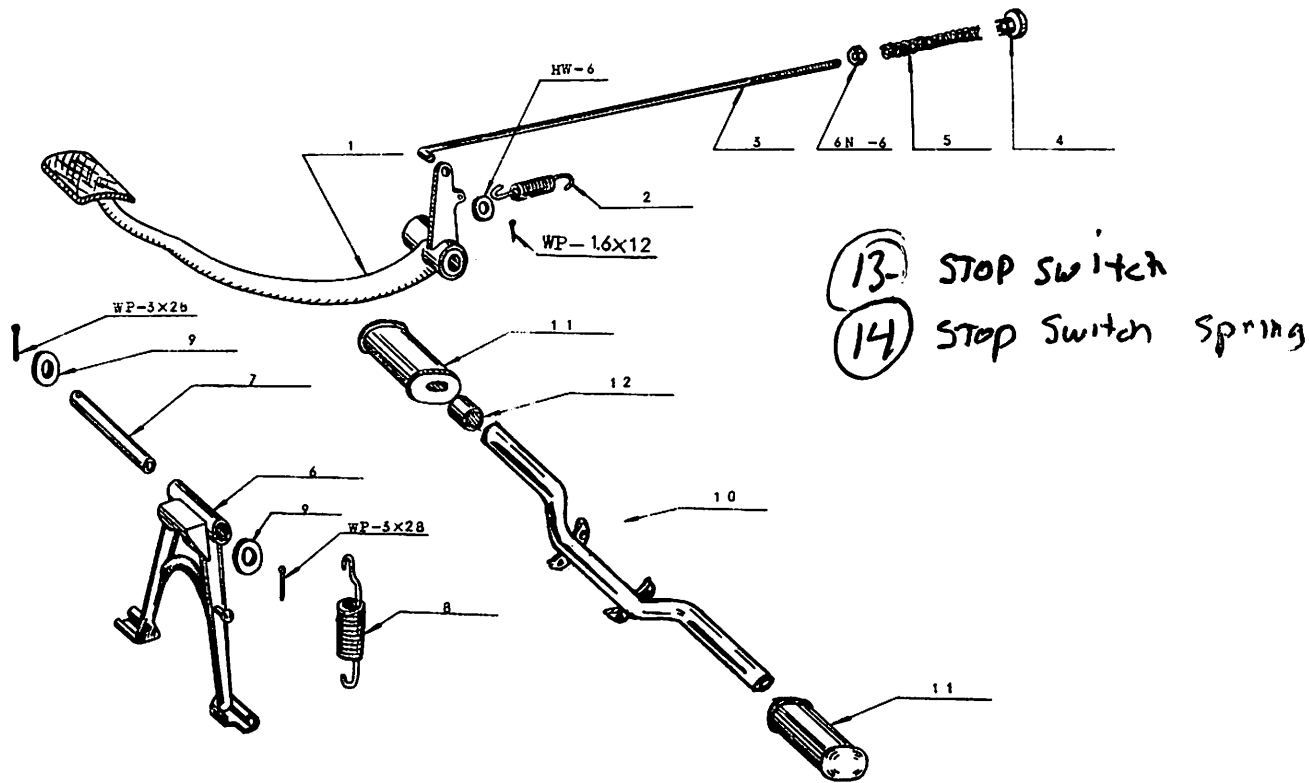
### HANDLE BAR

INDEX NO.	PARTS NO.	PARTS NAME	UNIT	INTERCHANGE-		REMARKS
				ABILITY D	S	
1	4511-3010	Handle bar	1	o	o	
2	09511-106	6 x 82mm hexagon bolt	4	o	o	
3	4283-3012	Upper bracket (handle)	1	o	o	
4	4282-3012	Lower bracket (handle)	1	o	o	
5	3323-3000	Head nut	1	o	o	
6	4281-3000	Bracket (handle)	1	o	o	
7	4601-3101	Mirror comp.	1	o	o	Used both hand
8	4621-3101	Stay	1	o	o	"
9		Set nut (mirror)	1	o	o	"
10	4622-3102	Set band comp.	1	o	o	"
11	8121-3010	Head ornament	1	o	o	"BRIDGESTONE 7"
	8121-3020	Head ornament	1	o	o	"SURFRIDER 7" mark
12	8122-3006	Clip (ornament)	2	o	o	
13	8111-3004	Head cover	1	o	o	
	8111-3012	Head cover	1	o	o	
14	8124-3011	Rubber (head cover)	2	o	o	



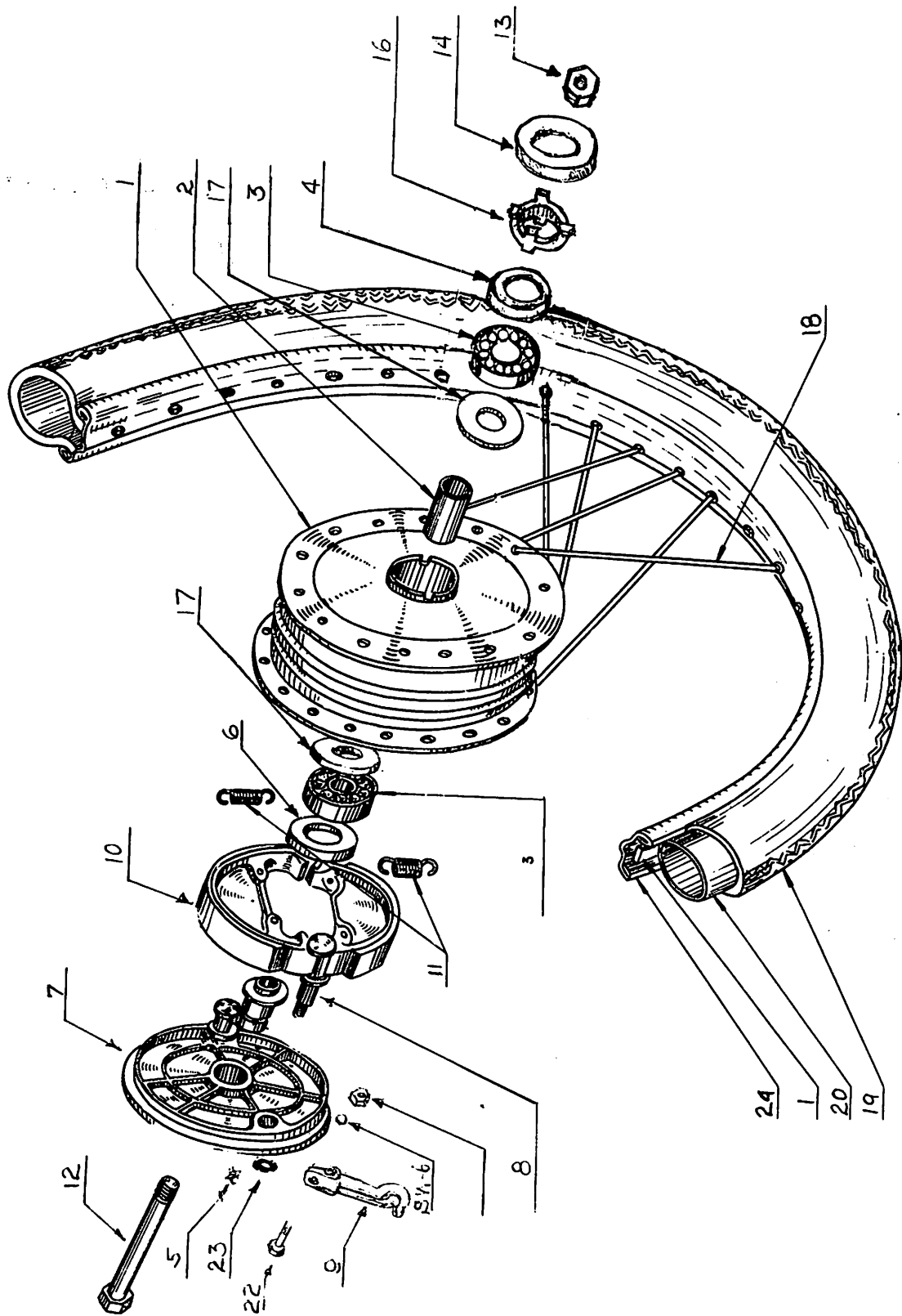
REAR SWING ARM ASSEMBLY, CHAIN CASE

INDEX NO.	PARTS NO.	PARTS NAME	UNIT	INTERCHANGE-ABILITY		REMARKS
				D	S	
1	4810-3003	Rear swing arm	1	o	o	With torsion rubber packing
2	4851-3002	Torsion rubber	2	o	o	
3	4853-3001	Packing (rear frame)	1	o	o	
4	4861-3002	Chain adjuster	2	o	o	
5	4701-3001	Chain case assembly	1	o	o	Includes No.5 - 6
6	4701-3100	Upper case (chain case)	1	o	o	
7	4721-3000	Lower case (chain case)	1	o	o	
8	4901-3005	Rear shock assembly	1	o	o	
9	4731-3000	Cap (chain case)	1	o	o	
10	3702-3000	Tandem foot rest	2	o	o	
	4852-3001	Cap (rear frame)	2	o	o	



FOOT REST, STAND, BRAKE PEDAL ASSEMBLY

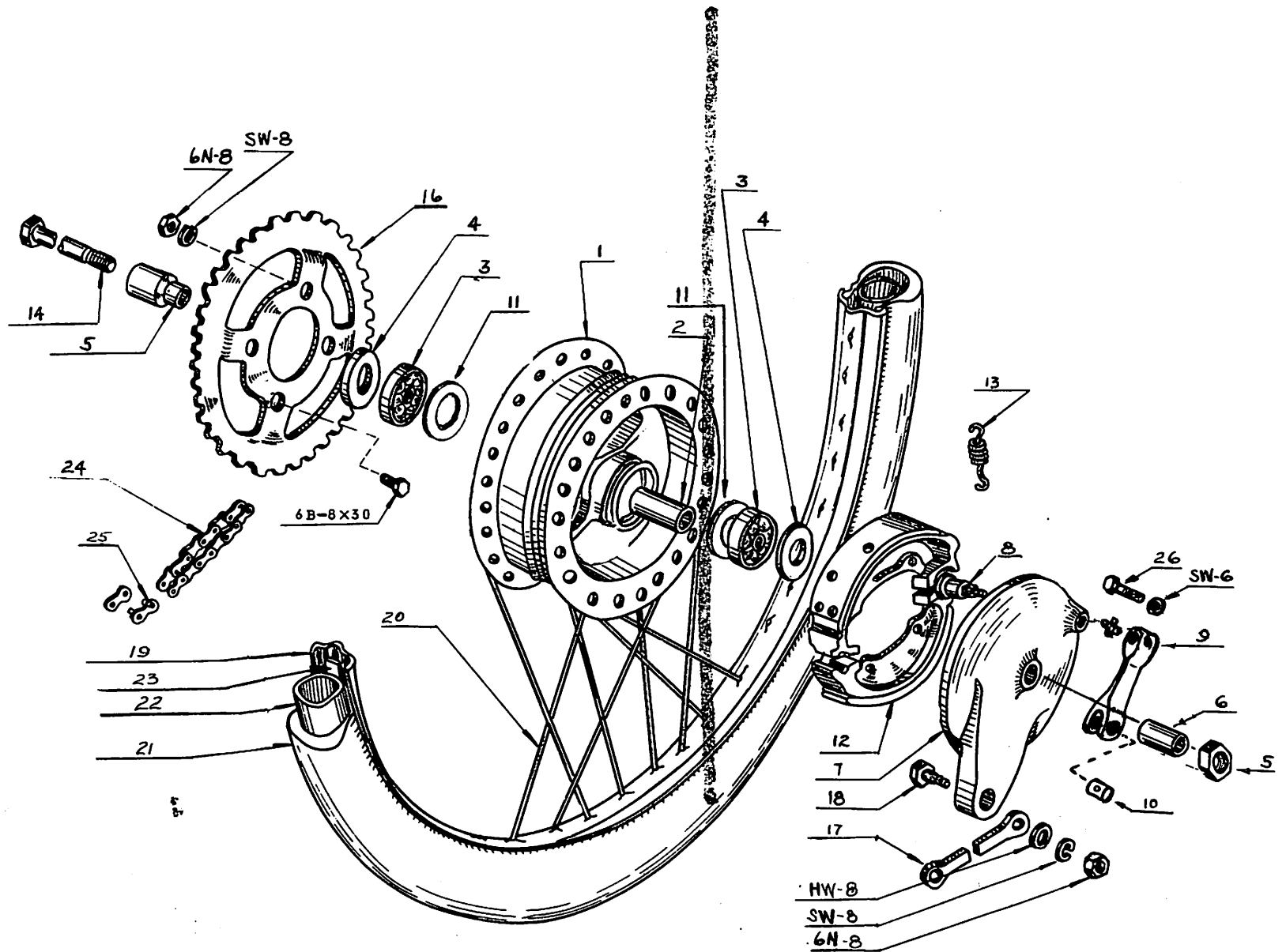
INDEX NO.	PARTS NO.	PARTS NAME	UNIT	INTERCHANGE-ABILITY		REMARKS
				D	S	
1	3810-3005	Brake pedal	1	o	o	
2	3821-3001	Spring (rear brake pedal)	1	o	o	
3	3831-3001	Brake rod	1	o	o	
4	3832-3000	Adjusting nut (rear brake)	1	o	o	
5	3833-3000	Spring (rear brake rod)	1	o	o	
6	3610-3100	Stand	1	o	o	
7	3621-3002	Stand tube	1	o	o	
8	3624-3000	Spring (stand)	1	o	o	
9	09541-103	Washer (stand)	2	o	o	
	3701-3001	Foot rest assembly	1	o	o	Includes No. 10-12
10	3710-3002	Foot rest shaft	1	o	o	
11	3721-3002	Rubber (foot rest)	2	o	o	
12	3725-3001	Rubber stopper (foot rest)	1	o	o	
13	8650-3000	STOP SWITCH - NOT SHOWN				
14	8661-3001	Switch Spring - NOT SHOWN				



FRONT WHEEL

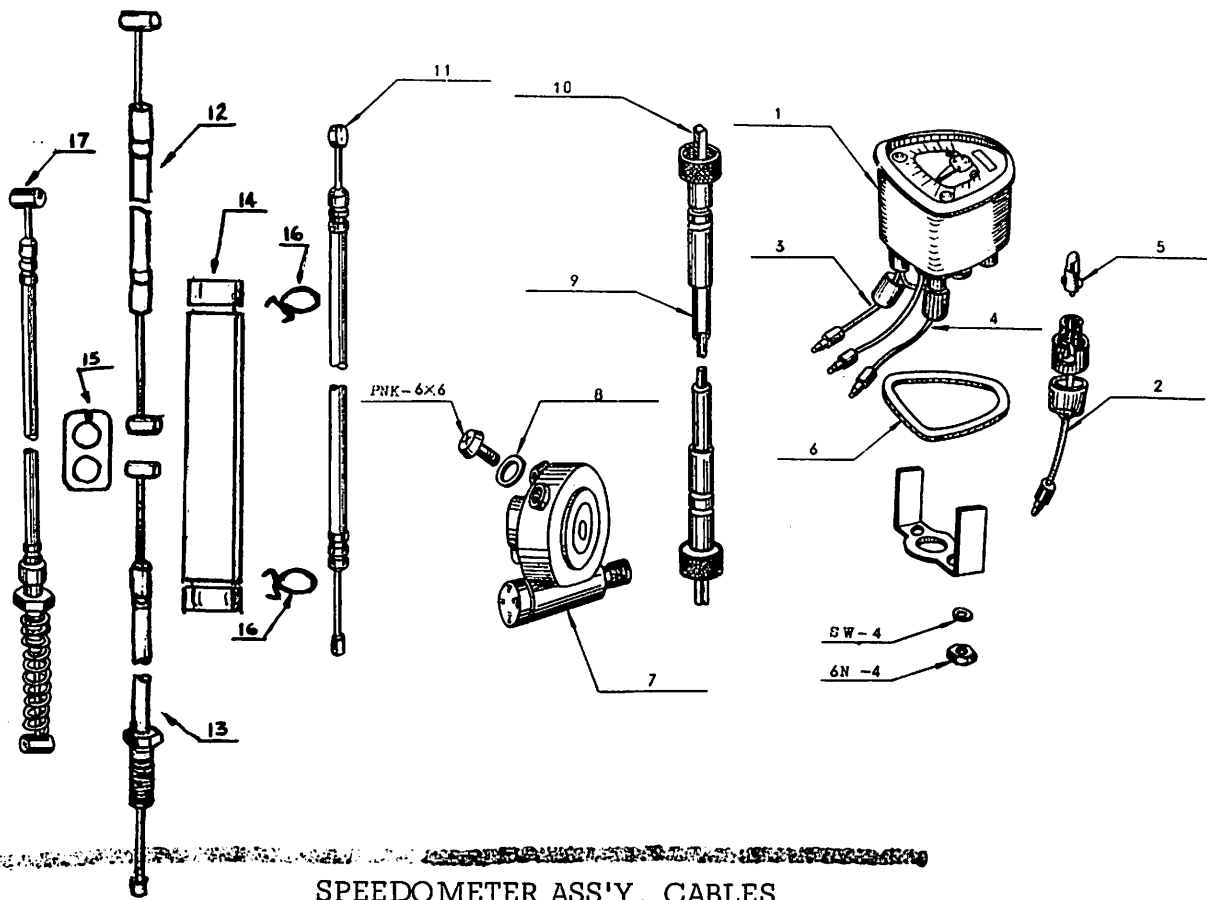
INDEX NO.	PARTS NO.	PARTS NAME	UNIT	INTERCHANGE-		REMARKS
				ABILITY D	S	
1	7102-3003 7111-3004	Front hub assembly Drum (front)	1 1	o o	o o	Includes No.1 - 17 With center pipe & ball bearing
2	7114-3002	Center pipe (front hub)	1	o	o	
3	07-6201-03	Ball bearing (front hub)	2	o	o	(# 6201)
4	09590-101	Oil seal L (front hub)	1	o	o	
5	7121-3000	Grease nipple	2	o	o	
6	09590-102	Oil seal R (front hub)	1	o	o	
7	7131-3005	Cover (front hub)	1	o	o	
8	7151-3003	Cam (front hub)	1	o	o	
9	7153-3004	Brake lever (front)	1	o	o	
		<del>Brake shoe assembly</del>	<del>1</del>	<del>o</del>	<del>o</del>	<del>Includes No. 1 - 17</del>
10	7105-3003	Brake shoe	2	o	o	
11	7145-3001	Spring (shoe)	2	o	o	
12	7221-3002	Shaft (front hub)	1	o	o	
13	0232-1200	Nut (hub shaft)	1	o	o	
14	7121-3000	Dust seal (gear box)	1	o	o	
15	7118-3000	Oil seal collar	1	o	o	
16	7116-3000	Ring gear driver	1	o	o	
17	7115-3000	Center pipe supporter	2	o	o	
18	7108-3000	Spoke (front)	36	o	o	With nipple & washer
19	225 x 17 "	Tire (front)	1	o	o	
20	225 x 17 "	Tube	1	o	o	
21	7253-3000	Rim band	1	o	o	
22	0111-0631	Brake lever bolt	1	o	o	
23	7152-3001	Packing (brake lever)	1	o	o	
24	7441-3000	Rim (front)	1	o	o	

(10)



REAR WHEEL

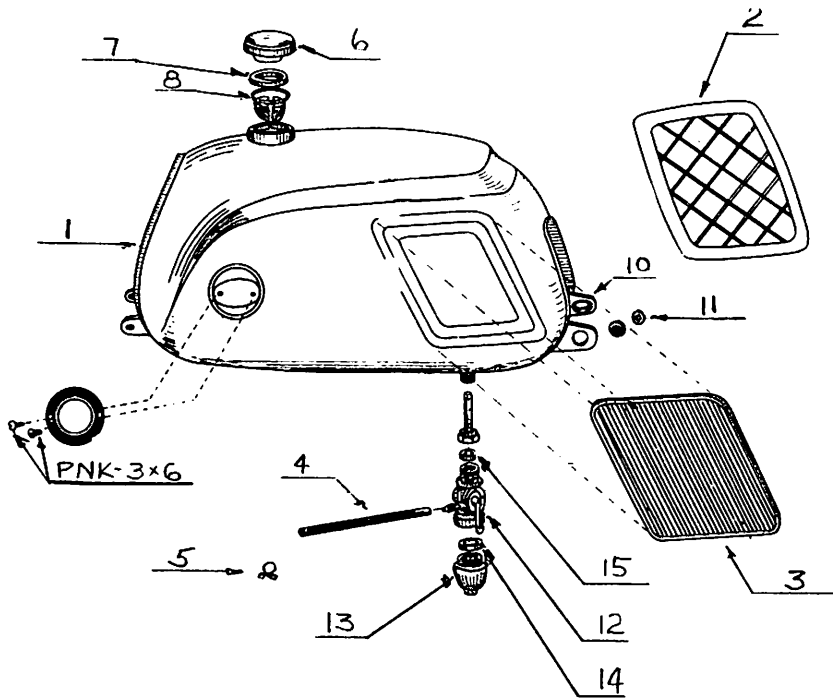
INDEX NO.	PARTS NO.	PARTS NAME	UNIT	INTERCHANGE-ABILITY		REMARKS
				D	S	
	7302-3003	Rear hub assembly	1	o	o	Includes No.1-16 With center pipe, ball bearing
1	7311-3002	Drum (rear)	1	o	o	
2	7314-3001	Center pipe (rear hub)	1	o	o	(#6201)
3	07-6201-03	Ball bearing (rear hub)	2	o	o	
4	09590-103	Oil seal (rear)	2	o	o	
5	7427-3001	Bearing spacer (rear)	1	o	o	
6	7426-3001	Ring (rear hub)	1	o	o	
7	7331-3002	Cover (rear hub)	1	o	o	
8	7351-3003	Cam (rear)	1	o	o	
9	7353-3004	Brake lever (rear)	1	o	o	
10	7361-3003	Anchor pin	1	o	o	
11	7115-3000	Center pipe supporter	2	o	o	
		<del>Brake shoe assembly</del>	<del>1</del>	<del>o</del>	<del>o</del>	<del>Includes 10-12</del>
12	7105-3003	Brake shoe	2	o	o	
13	7145-3001	Spring (shoe)	2	o	o	
14	7421-3002	Shaft (rear hub)	1	o	o	
15	0232-1200	Nut (hub shaft)	1	o	o	
16	7381-3000	Sprocket (driven)	1	o	o	
17	7366-3000	Tension bar (rear)	1	o	o	
18	7367-3001	Bolt (rear tension bar)	1	o	o	
19	7441-3000	Rim (rear)	1	o	o	
20	7308-3000	Spoke (rear)	36	o	o	With nipple & washer
21	225x17	Tire (rear)	1	o	o	
22	225x17	Tube	1	o	o	
23	7253-3000	Rim band	1	o	o	
24	7501-3000	Chain (#420)	1	o	o	With chain connector
25	7520-3000	Chain connector (#420)	1	o	o	
26	0111-0630	Brake lever bolt	1	o	o	
27	7152-3001	<del>Packing (brake lever)</del>	<del>1</del>	<del>o</del>	<del>o</del>	



SPEEDOMETER ASS'Y, CABLES

INDEX NO.	PARTS NO.	PARTS NAME	UNIT	INTERCHANGE-		REMARKS
				D	S	
1	8401-3004	Speedometer assembly	1	o		Includes No. 1-6
	8401-3030	Speedometer assembly	1		o	
2	8421-3002	Socket (meter lamp)	1	o	o	Gray
3	8422-3002	Socket (charge lamp)	1	o		Gray-white lead wire
4	8423-3002	Socket (neutral lamp)	1	o	o	Yellow-green lead wire
5	8424-3000	Bulb (meter lamp)	3	o		12V - 2W
	8424-3010	Bulb (meter lamp)	2		o	6V - 1W
6	8427-3000	Packing (speedometer)	1	o	o	
7	7261-3003	Speedometer drive	1	o	o	
8	<del>6171-3001</del>	<del>Speedometer cable</del>	<del>1</del>	<del>o</del>	<del>o</del>	Includes No. 9-10
	6171-3001	Speedometer cable	1	o	o	
9	9412-3000	Outer tube (meter)	1	o	o	
10	9411-3000	Inner cable (meter)	1	o	o	
11	6176-3001	Throttle cable	1	o	o	
	6186-3001	Clutch cable assembly	1	o	o	Includes NO. 12-16
12	<del>6186-3001</del>	<del>Clutch cable assembly</del>	<del>1</del>	<del>o</del>	<del>o</del>	
13	<del>6186-3001</del>	<del>Clutch cable assembly</del>	<del>1</del>	<del>o</del>	<del>o</del>	
14	9423-3000	Cable connector	2	o	o	
15	9424-3000	Wire hook	1	o	o	
16	9425-3000	Clip (clutch cable)	2	o	o	
17	6181-3000	Brake cable	1	o	o	





INDEX  
NO.

PARTS NO.

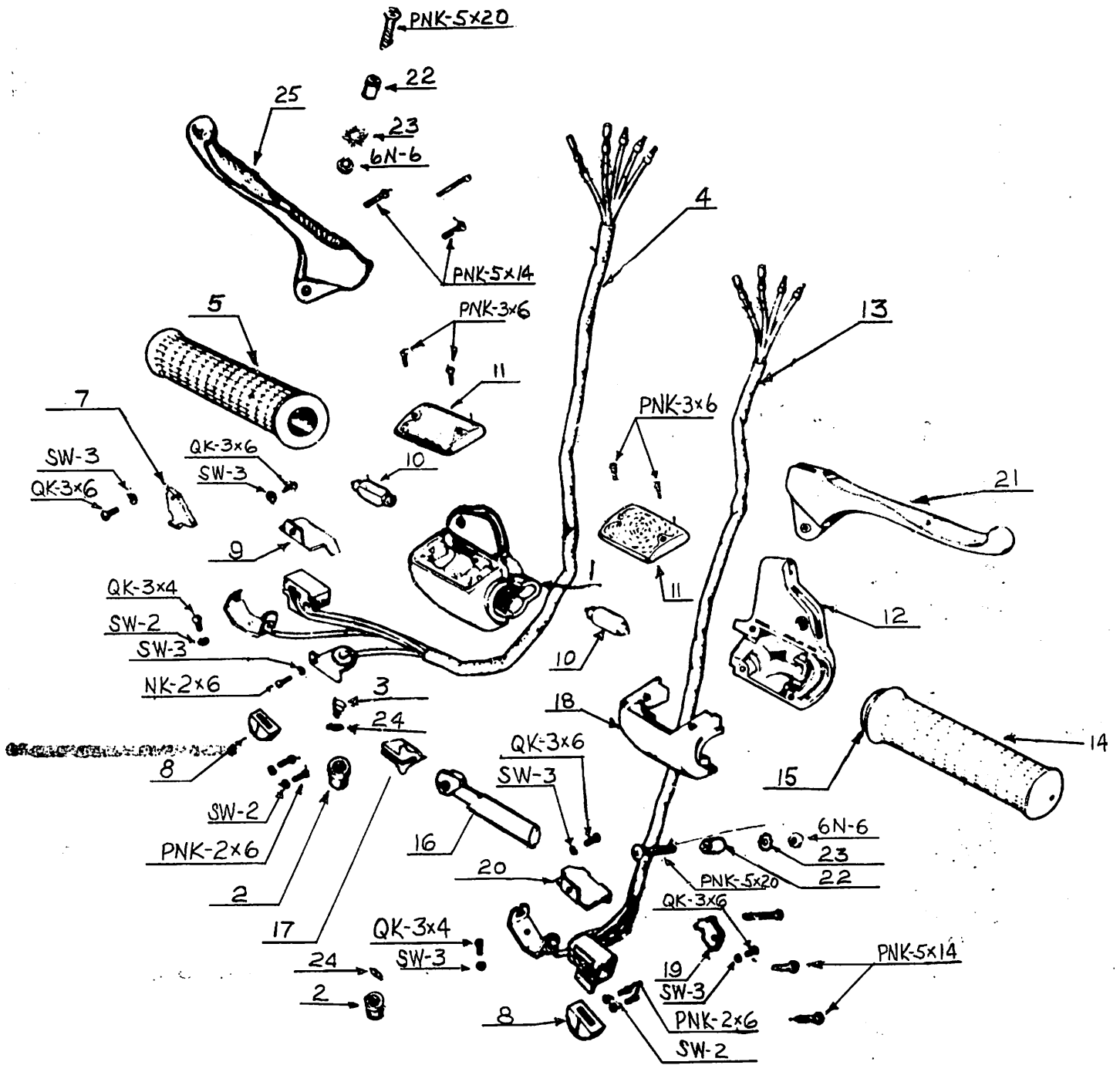
PARTS NAME

UNIT

INTERCHANGE-  
ABILITY  
D S

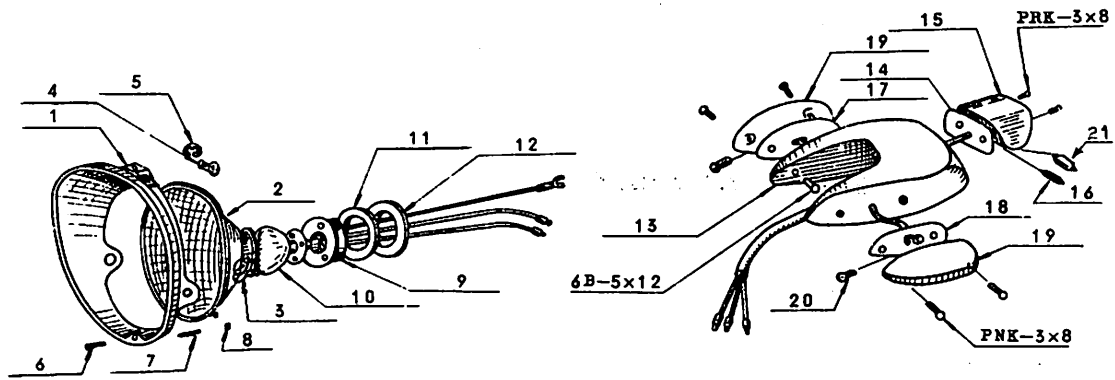
REMARKS

INDEX NO.	PARTS NO.	PARTS NAME	UNIT	INTERCHANGE-ABILITY		REMARKS
				D	S	
	5101-3001	Fuel tank assembly	1	o	o	<del>Includes No. 1 - 15</del>
1		Fuel tank	1	o	o	
2	5142-3000	Knee grip (R)	1	o	o	
3	5141-3000	Knee grip (L)	1	o	o	
4	5172-3001	Fuel pipe	1	o	o	
5	5187-3004	Clip (fuel pipe)	1	o	o	
6	5160-3002	Cap (fuel tank)	1	o	o	With packing
7	5171-3001	Packing (tank cap)	1	o	o	
8		Filter (tank)	1	o	o	NOT USED
9	5143-3000	Side mark	2	o	o	
10	5148-3000	Grommet seat (fuel tank)	2	o	o	
11	5149-3000	Grommet (tank)	2	o	o	
	5103-3000	Fuel cock assembly	1	o	o	Includes No. 12 - 15
12	5181-3000	Fuel cock body	1	o	o	
13	5182-3000	Bowl	1	o	o	
14	5183-3000	Packing (bowl)	1	o	o	
15	5184-3000	Packing (fuel cock)	1	o	o	



TURN SIGNAL, GRIP ASSEMBLY

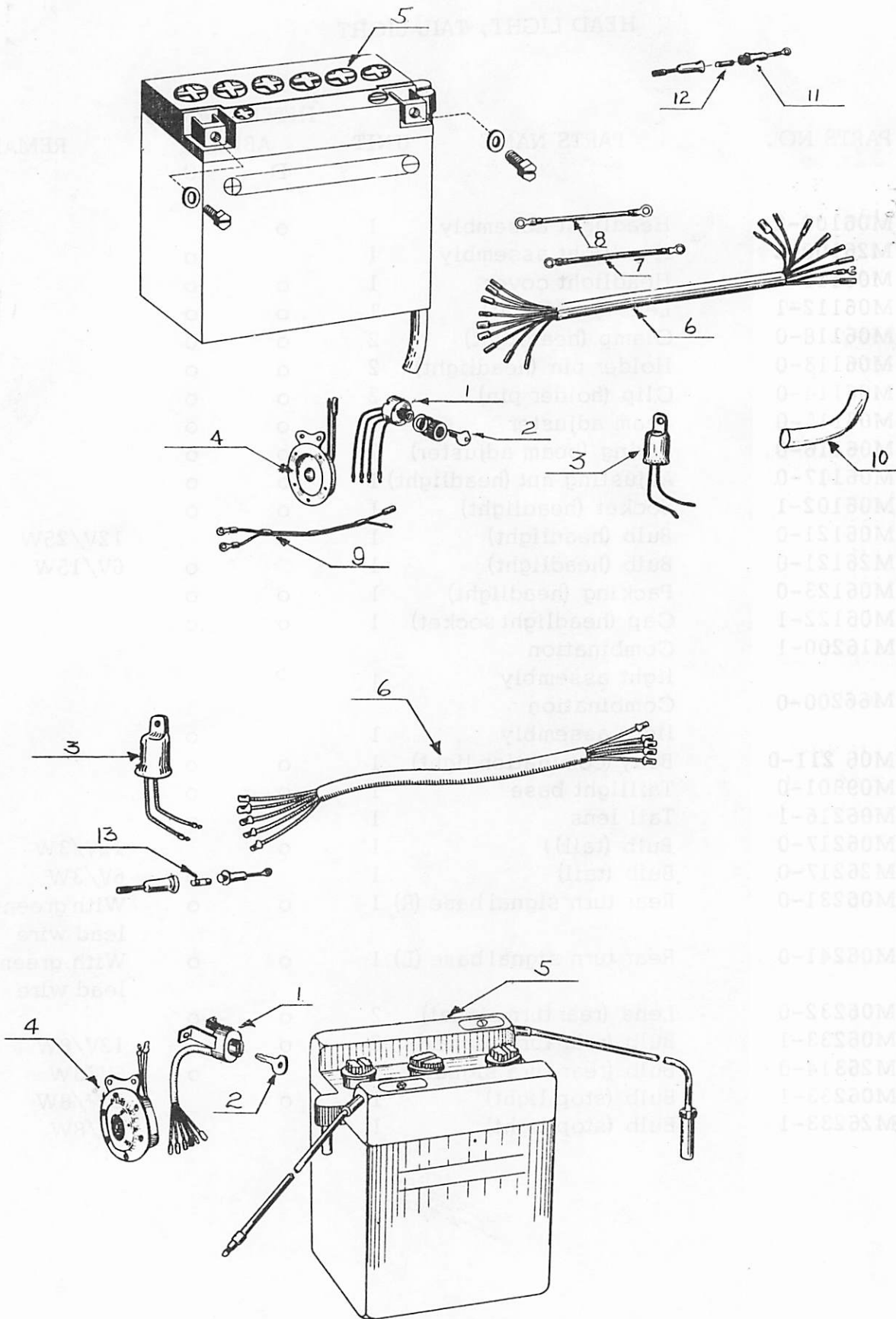
INDEX NO.	PARTS NO.	PARTS NAME	UNIT	INTERCHANGE-ABILITY		REMARKS
				D	S	
	6101-3021	GRIP L ASSEMBLY		o	⊙	6v
	6101-3010	Grip (L) assembly	1	⊙	o	12v
1	6111-3011	Lever holder (L)	1	o	o	
2	6113-3100	Switch button	1-2	o	o	1 piece for "STANDARD MODEL" 2 pieces for "DELUXE MODEL"
3	6114-3100	Spring (horn)	2	o	o	
4	6115-3100	Wire (L) assembly	1	o	o	
5	6123-3100	Grip (L)	1	o	o	
6	6121-3101	Holder cover (L)	1	o	o	
7	6116-3100	Wire clamp (L)	1	o	o	
8	6119-3100	Knob (switch)	2	o	o	
9	6117-3100	Switch clamp (L)	1	o	o	
10	8332-3110	Bulb (front turn signal)	2	o		12V/8W
	8332-3100	Bulb (front turn signal)	2		o	6V/8W
11	8331-3101	Lens (front turn signal)	2	o	o	
	6104-3120	Grip (R) assembly	1	o		
	6104-3100	Grip (R) assembly	1		o	
12	6141-3110	Lever holder (R)	1	o		
	6141-3101	Lever holder (R)	1		o	
13	6145-3110	Wire (R) assembly	1	o		
	6145-3100	Wire (R) assembly	1		o	
14	6153-3100	Grip (R)	1	o	o	
15	6154-3100	Grip pipe (R)	1	o	o	
16	6155-3100	Sliding shoe	1	o	o	
17	6156-3100	Stopper	1	o	o	
18	6151-3101	Holder cover (R)	1	o	o	
19	6146-3100	Wire clamp (R)	1	o	o	
20	6147-3100	Switch clamp (R)	1	o	o	
21	6152-3100	Lever (R)	1	o	o	
22	6124-3100	Collar (lever pivot)	2	o	o	
23	0451-0510	Tooth washer	2	o	o	
24	6112-3100	Contact plate (switch)	1-2	o	o	1 piece for "STANDARD MODEL" 2 pieces for "DELUXE MODEL"
25	6122-3011	Lever (L)	1	o	o	
26	6146-3110	Self switch clamp	1	o		



HEAD LIGHT, TAIL LIGHT

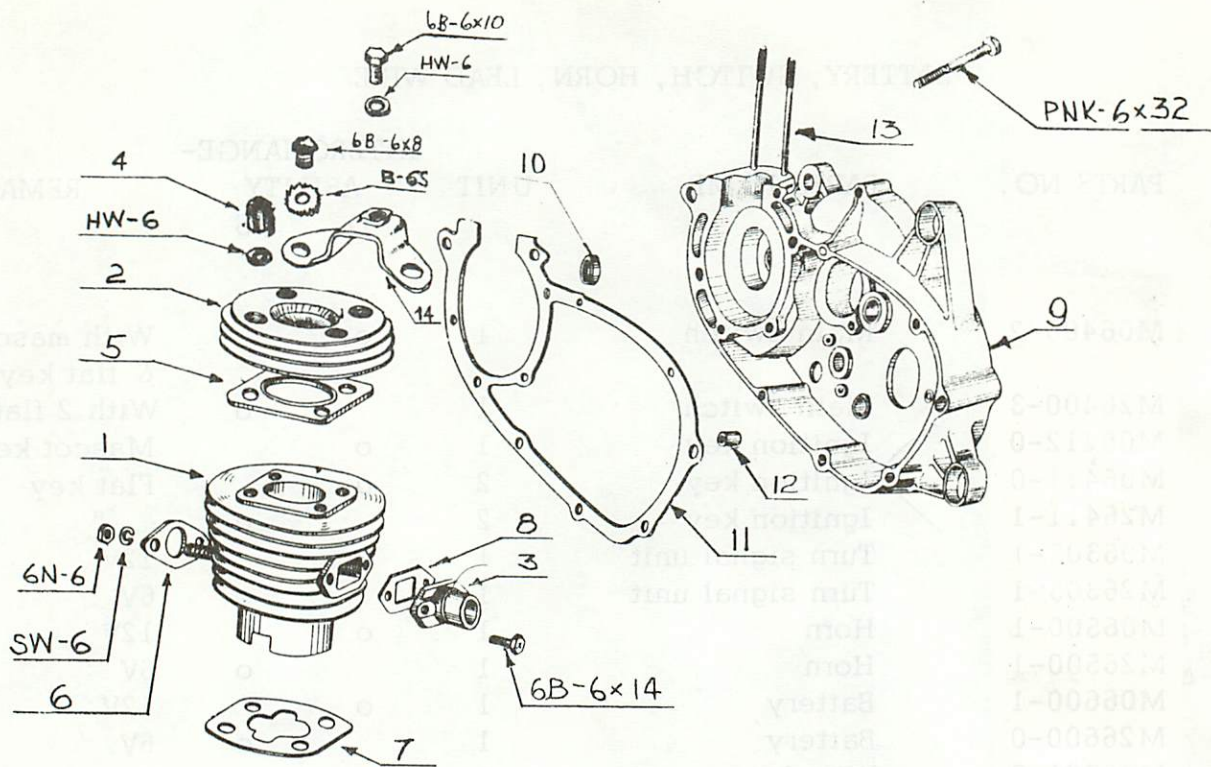
## HEAD LIGHT, TAIL LIGHT

INDEX NO.	PARTS NO.	PARTS NAME	UNIT	INTERCHANGE- ABILITY		REMARKS
				D	S	
	8102-3004	Headlight assembly	1	o		
	8102-3012	Headlight assembly	1		o	
1	8141-3002	Headlight cover	1	o	o	
2	8150-3002	Lens (headlight)	1	o	o	
3	8154-3000	Clamp (headlight)	2	o	o	
4	8177-8000	Holder pin (headlight)	2	o	o	
5	8173-3001	Clip (holder pin)	2	o	o	
6	8176-3000	Beam adjuster	1	o	o	
7	8174-3000	Spring (beam adjuster)	1	o	o	
8	8175-8000	Adjusting nut (headlight)	1	o	o	
9	8160-3004	Socket (headlight)	1	o	o	
10	8171-3000	Bulb (headlight)	1	o		12V/25W
	8171-3010	Bulb (headlight)	1		o	6V/15W
11		Packing (headlight)	1	o	o	
12		Cap (headlight socket)	1	o	o	
	8201-3010	Combination				
		light assembly	1	o		
	8201-3040	Combination				
		light assembly	1		o	
13	8211-3001	Body (combination light)	1	o	o	
14	8240-3010	Taillight base	1	o	o	
15	8251-3001	Tail lens	1	o	o	
16	8262-3000	Bulb (tail)	1	o		12V/3W
	8252-3020	Bulb (tail)	1		o	6V/3W
17	8362-3000	Rear turn signal base (R)	1	o	o	With green-white lead wire
18	8352-3000	Rear turn signal base (L)	1	o	o	With green-yellow lead wire
19	8371-3000	Lens (rear turn signal)	2	o	o	
20	8332-3000	Bulb (rear turn signal)	2	o		12V/8W
	8332-3020	Bulb (rear turn signal)	2		o	6V/3W
21	8332-3000	Bulb (stop light)	1	o		12V/8W
	8332-3010	Bulb (stop light)	1		o	6V/8W



BATTERY, SWITCH, HORN, LEAD WIRE

INDEX NO.	PARTS NO.	PARTS NAME	UNIT	INTERCHANGE-ABILITY		REMARKS
				D	S	
1	8601-3002	Main switch	1	o		With mascot key 1 & flat key 1
1	8601-3013	Main switch	1		o	With 2 flat keys
2	Need Key Number	Ignition key	1	o		Mascot key
2		Ignition key	2	o		Flat key
2		Ignition key	2		o	"
3	8305-3002	Turn signal unit	1	o		12V
3	8305-3012	Turn signal unit	1		o	6V
4	8402-3000	Horn	1	o		12V
4	8402-3012	Horn	1		o	6V
5		Battery	1	o		12V
5		Battery	1		o	6V
6	8810-3000	Wire harness	1	o		
6	8810-3011	Wire harness	1		o	
7	8822-3000	Wire (battery)	1	o		
8	8831-3000	Wire (ground)	1	o		
9	8535-3000	Wire (ignition)	1	o		
10	8829-3001	Cover tube	1	o	o	
11	8802-3021	Fuse assembly	1	o		With 12V fuse
11	8802-3030	Fuse assembly	1		o	With 6V fuse
12	8861-3000	Fuse (12V)	1	o		12V/10A
13	8861-3010	Fuse (6V)	1		o	6V/7A

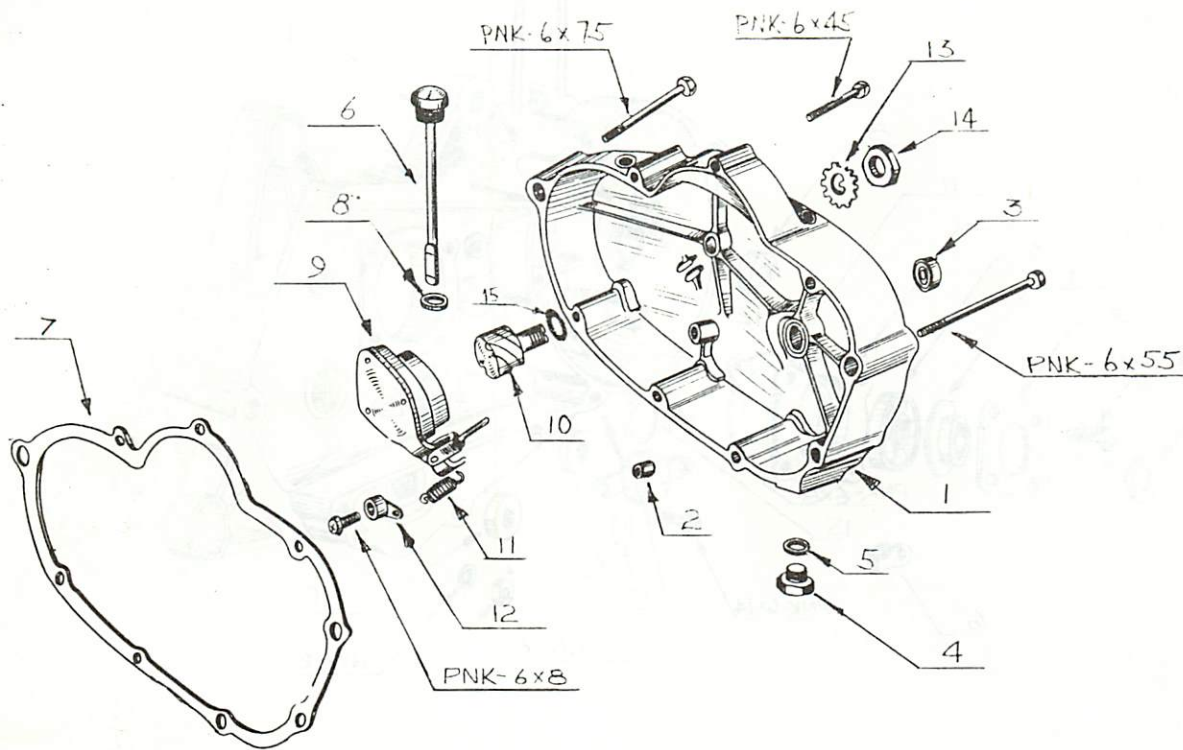


CYLINDER, CRANK CASE

INDEX NO.	PARTS NO.	PARTS NAME	UNIT	INTERCHANGE-ABILITY		REMARKS
				D	S	
1	1120-3000	Cylinder	1	o	o	
2	1111-3001	Cylinder head	1	o	o	
3	1131-3020	Adapter (carburetor)	1	o	o	
4	1115-3000	Nut (cylinder head)	4	o	o	
5	1141-3001	Gasket (cylinder head)	1	o	o	
6	1142-3000	Gasket (exhaust)	1	o	o	
7	1143-3001	Packing (cylinder)	1	o	o	
8	1144-3001	Packing (adapter)	1	o	o	
9	2130-3000	Crank case (B)	1	o	o	
10	09090-104	Oil seal (17mm)	1	o	o	
11	2181-3001	Packing (crank case)	1	o	o	
12	09057-101	Knock (crank case)	2	o	o	
13	2141-3001	Stud (B) (crank case B)	2	o	o	
14	1823-3000	Stay assembly	1	o	o	

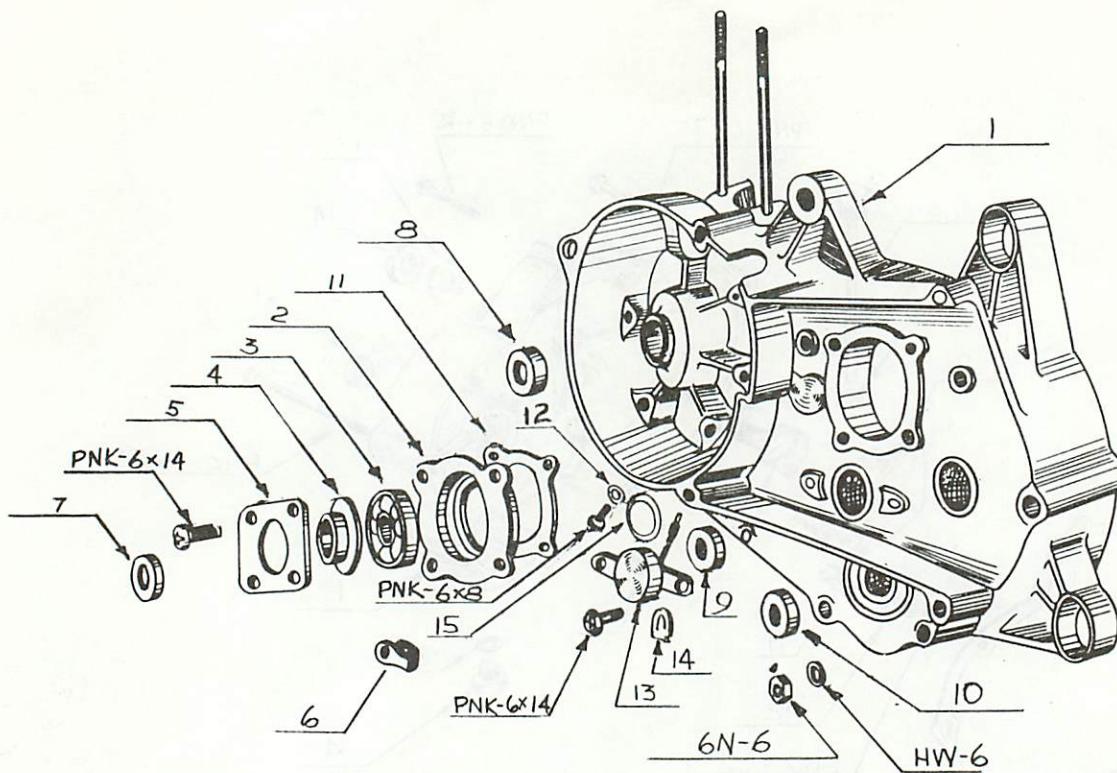
With 6B-6 x 8,  
60-6 x 10 hexa-  
gon bolt, HW-6  
& B-6S tooth  
washer





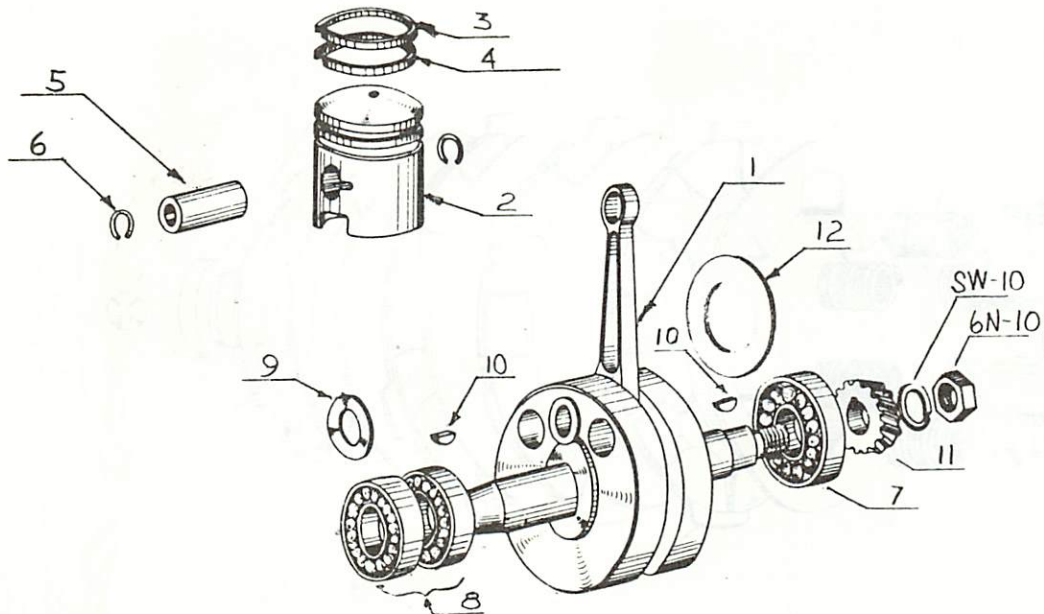
TRANSMISSION CASE

INDEX NO.	PARTS NO.	PARTS NAME	UNIT	INTERCHANGE-ABILITY		REMARKS
				D	S	
1	2161-3002	Transmission case	1	o	o	
2	09057-101	Knock (crank case)	2	o	o	
3	09090-101	Oil seal (15mm)	1	o	o	
4	09058-101	Drain plug	1	o	o	
5	09064-101	Fiber packing (14mm)	1	o	o	
6	2164-3001	Oil gauge	1	o	o	
7	2183-3001	Packing (transmission case)	1	o	o	
8	2188-3000	Packing (oil gauge)	1	o	o	
9	2260-3003	Release arm assembly	1	o	o	
10	2265-3001	Release screw	1	o	o	
11	2271-3000	Spring (release arm)	1	o	o	
12	2269-3000	Spring hanger	1	o	o	
13	09045-101	Tooth washer	1	o	o	LEFT TURN THREAD
14	09029-102	10mm hexagon nut	1	o	o	"
15	2186-3000	Packing (release screw)	1	o	o	



### CRANK CASE

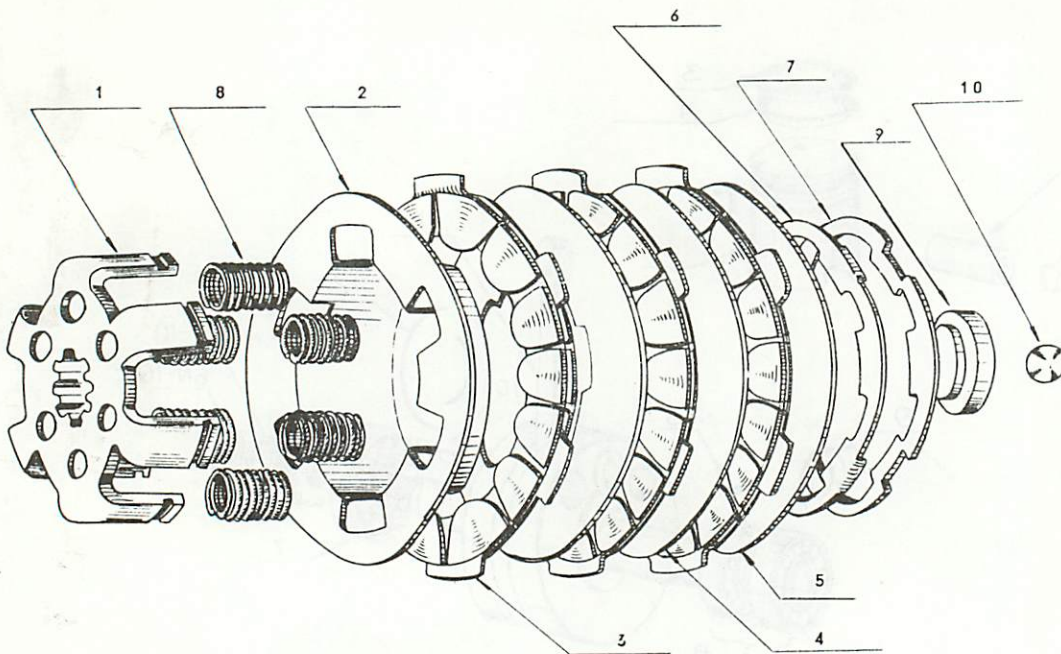
INDEX NO.	PARTS NO.	PARTS NAME	UNIT	INTERCHANGE-		REMARKS
				D	S	
1	2110-3000 2110-3010	Crank case A	1	o		
2	2119-3001	Bearing case (driving)	1	o	o	
3	01-6302-01	Ball bearing (#6302)	1	o	o	
4	2125-3001	Bearing cover A	1	o	o	
5	2126-3003	Bearing cover B	1	o	o	
6	2129-3006	Clamp (neutral switch)	2	o	o	
7	09090-105	Oil seal (20mm)	1	o	o	
8	09090-104	Oil seal (17mm)	1	o	o	
9	09090-103	Oil seal (15mm)	1	o	o	
10	09090-101	Oil seal (12mm)	1	o	o	
11	2187-3100	Packing (bearing case)	1	o	o	
12	09064-102	6mm fiber packing	1	o	o	
13	1760-3002	Neutral switch	1	o	o	
14	1762-5000	Contact plate	1	o	o	
15	09066-101	O ring (neutral switch)	1	o	o	



CRANK SHAFT, PISTON

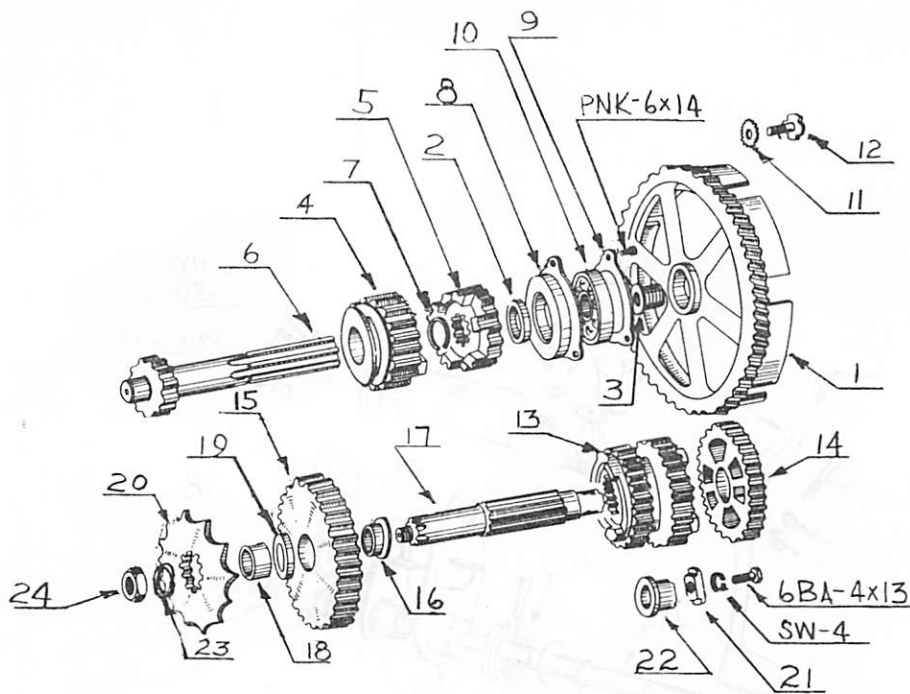
INDEX NO.	PARTS NO.	PARTS NAME	UNIT	INTERCHANGE-ABILITY		REMARKS
				D	S	
1	1301-3001	Crank shaft assembly	1	o		
2	1341-3003	Piston	1	o	o	
	1342-3001	Piston (0.25mm)		o	o	Over size
	1343-3001	Piston (0.5mm)		o	o	Over size
3	1305-3000	Piston ring (#1) (S.T.D.)	1	o	o	
	1306-3000	Piston ring (#1) (0.25mm)		o	o	Over size
	1307-3000	Piston ring (#1) (0.5mm)		o	o	Over size
4	1305-3000	Piston ring (#2) (S.T.D.)	1	o	o	
	1306-3000	Piston ring (#2) (0.25mm)		o	o	Over size
	1307-3000	Piston ring (#2) (0.5mm)		o	o	Over size
5	1381-3000	Piston pin	1	o	o	
6	1382-3000	Circlip (piston pin)	2	o	o	
7	07-6303-01	Ball bearing (#6303)	1	o	o	
8	07-6003-01	Ball bearing (#6003)	2	o	o	
9	09041-101	Washer (17mm)	1	o	o	
10	0671-3013	Woodruff key (3mm)	2	o	o	
11	1385-3000	Pinion gear	1	o	o	
12	09049-101	Shim (0.2mm)	1	o	o	
12	09049-102	Shim (0.3mm)	1	o	o	



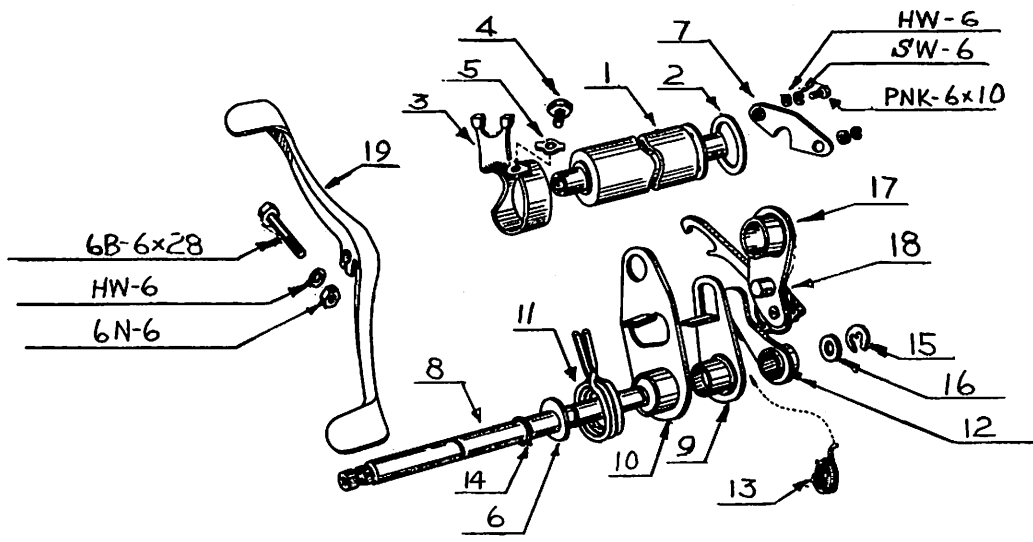


### CLUTCH

INDEX NO.	PARTS NO.	PARTS NAME	UNIT	INTERCHANGE-ABILITY		REMARKS
				D	S	
1	2200-3000	Clutch assembly	1	o	o	
	2220-3003	Clutch bracket	1	o	o	
2		Spring seat (clutch)	1	o	o	
3	2211-3001	Clutch plate	3	o	o	
4	2214-3002	Pressure plate A	2	o	o	
5	2215-3001	Pressure plate B	1	o	o	
6	2216-3001	Washer (set ring)	1	o	o	
7	2225-3000	Set ring	1	o	o	
8	2224-3000	Clutch spring	6	o	o	
9	2218-3001	Ball race (clutch)	1	o	o	
10	2231-3000	Ball (5/16")	1	o	o	
	0611-0516					

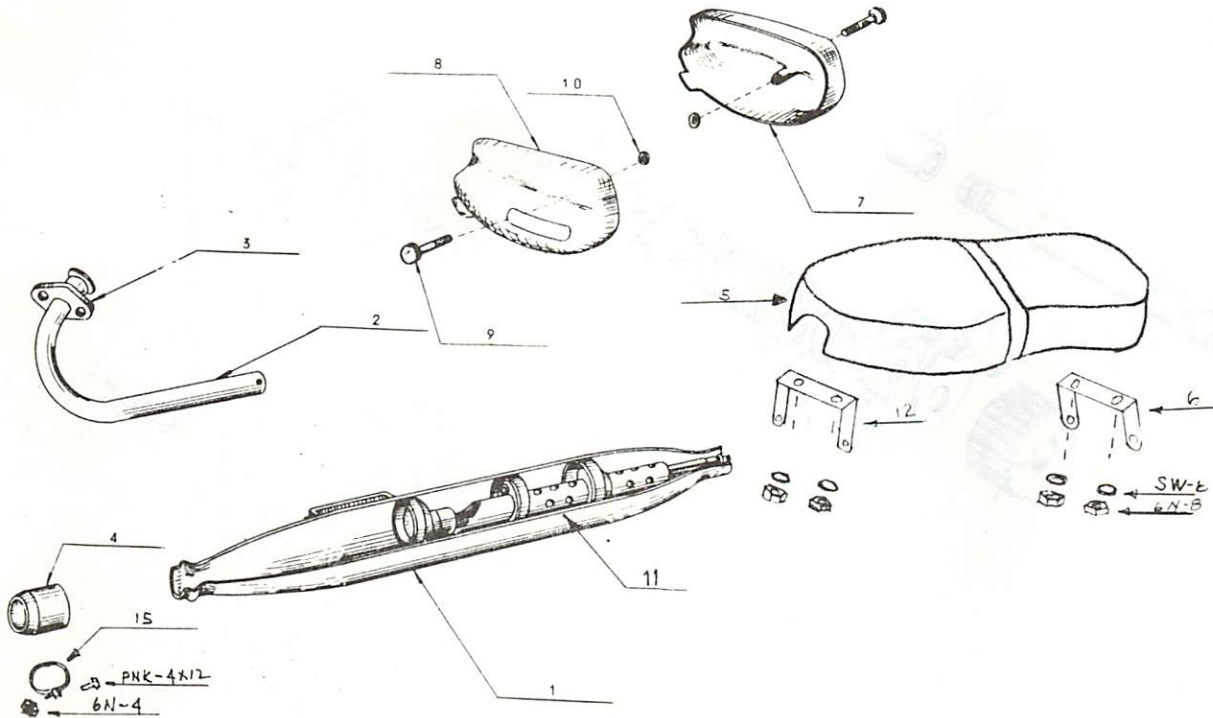


INDEX NO.	PARTS NO.	PARTS NAME	UNIT	INTERCHANGE-ABILITY		REMARKS
				D	S	
1	2411-3002	Driving gear	1	o	o	
2	2476-3001	Collar (counter shaft)	1	o	o	
3	2478-3001	Bearing (driving gear)	1	o	o	
4	1385-3000	Top gear (A)	1	o	o	
5	2426-3002	Second gear (A)	1	o	o	
6	2421-3001	Counter shaft	1	o	o	
7	09006-101	Circlip (15mm)	1	o	o	
8	2138-3001	Bearing case (counter shaft)	1	o	o	
9	2145-3002	Bearing holder	1	o	o	
10	07-6302-01	Ball bearing (#6302)	1	o	o	
11	0441-1221	Tooth washer (driving shaft)	1	o	o	
12	2479-3002	Set bolt (counter shaft)	1	o	o	
13	2461-3004	Top gear (B)	1	o	o	
14	2456-3002	Second gear (B)	1	o	o	
15	2451-3002	Low gear (B)	1	o	o	
16	2452-3001	Collar (low gear B)	1	o	o	
17	2446-3005	Driving shaft	1	o	o	
18	2483-3003	Collar A (driving shaft)	1	o	o	
19	2481-3002	Collar B (driving shaft)	1	o	o	
20	2484-3001	Sprocket (driving)	1	o	o	
21	2487-3000	End washer	1	o	o	
22	2486-3000	Push ring (driving shaft)	1	o	o	
23	09047-101	Lock washer	1	o	o	
24	09021-101	Set nut (driving shaft)	1	o	o	



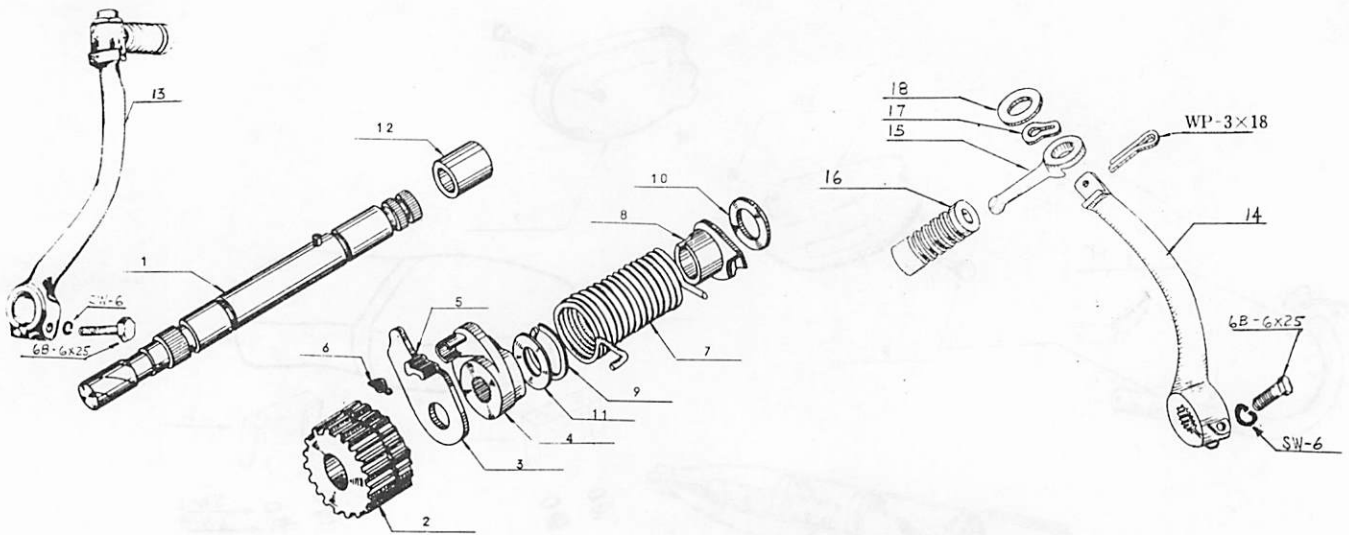
GEAR SHIFT

INDEX NO.	PARTS NO.	PARTS NAME	UNIT	INTERCHANGE-ABILITY		REMARKS
				D	S	
1	E06301-1	Shift drum assembly	1	o	o	
2	E06314-1	Washer (shift drum)	1	o	o	
3	E06322-3	Shift fork	2	o	o	
4	E06323-1	Guide bolt	2	o	o	
5	E06324-0	Washer (guide bolt)	2	o	o	
6	E06114-1	Washer (12mm)	2	o	o	
7	E06313-3	Thrust receiver	1	o	o	
8	E06111-1	Change shaft	1	o	o	
9	E06102-2	Shift plate	1	o	o	
10	E06104-1	Stopper (shift plate)	1	o	o	
11	E06113-1	Spring (shift plate)	1	o	o	
12	E06103-0	Stopper (shift drum)	1	o	o	
13	E06133-1	Spring (drum stopper)	1	o	o	
14	E06116-0	Circlip (12mm)	2	o	o	
15	E06117-0	Circlip (E type)	1	o	o	
16	E06115-0	Washer (10mm)	1	o	o	
17	E06201-2	Change arm	1	o	o	
18	E06221-1	Spring (change arm)	1	o	o	
19	E28411-1	Change pedal	1	o	o	



MUFFLER, SEAT ASSEMBLY

INDEX NO.	PARTS NO.	PARTS NAME	UNIT	INTERCHANGE-ABILITY		REMARKS
				D	S	
1	6301-3002	Muffler	1	o	o	With inner pipe
2	6351-3001	Exhaust pipe	1	o	o	
3	6361-3000	Mouth piece	1	o	o	
4	6362-3002	Rubber joint (muffler)	1	o	o	
5	6460-3012	Seat	1	o	o	
6		Bracket assembly (R)	1	o	o	
7	6802-3001	Tool box (R) assembly	1	o	o	With knob, stopper
8	6801-3001	Tool box (L) assembly	1	o		With knob, stopper
	6801-3001	Tool box (L) assembly	1		o	With knob, stopper
9	6831-3002	Knob (tool box)	2	o	o	
10	09504-101	Circlip (knob)	2	o	o	
11	6320-3000	Inner pipe (muffler)	1	o	o	
12	6460-3012	Bracket assembly (F)	2	o	o	
13	NA	Stopper rubber (seat) (L)	1	o	o	
14	NA	Stopper rubber (seat) (R)	1	o	o	
15	6363-3001	Stopper (rubber joint)	1	o	o	



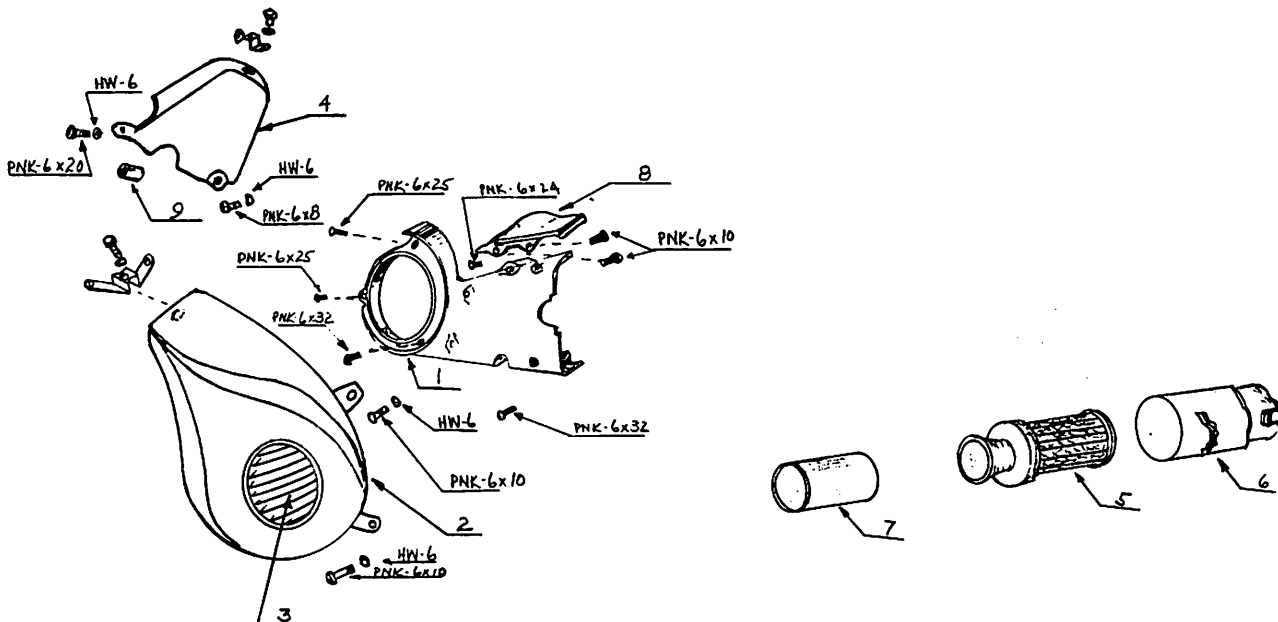
### KICK STARTER

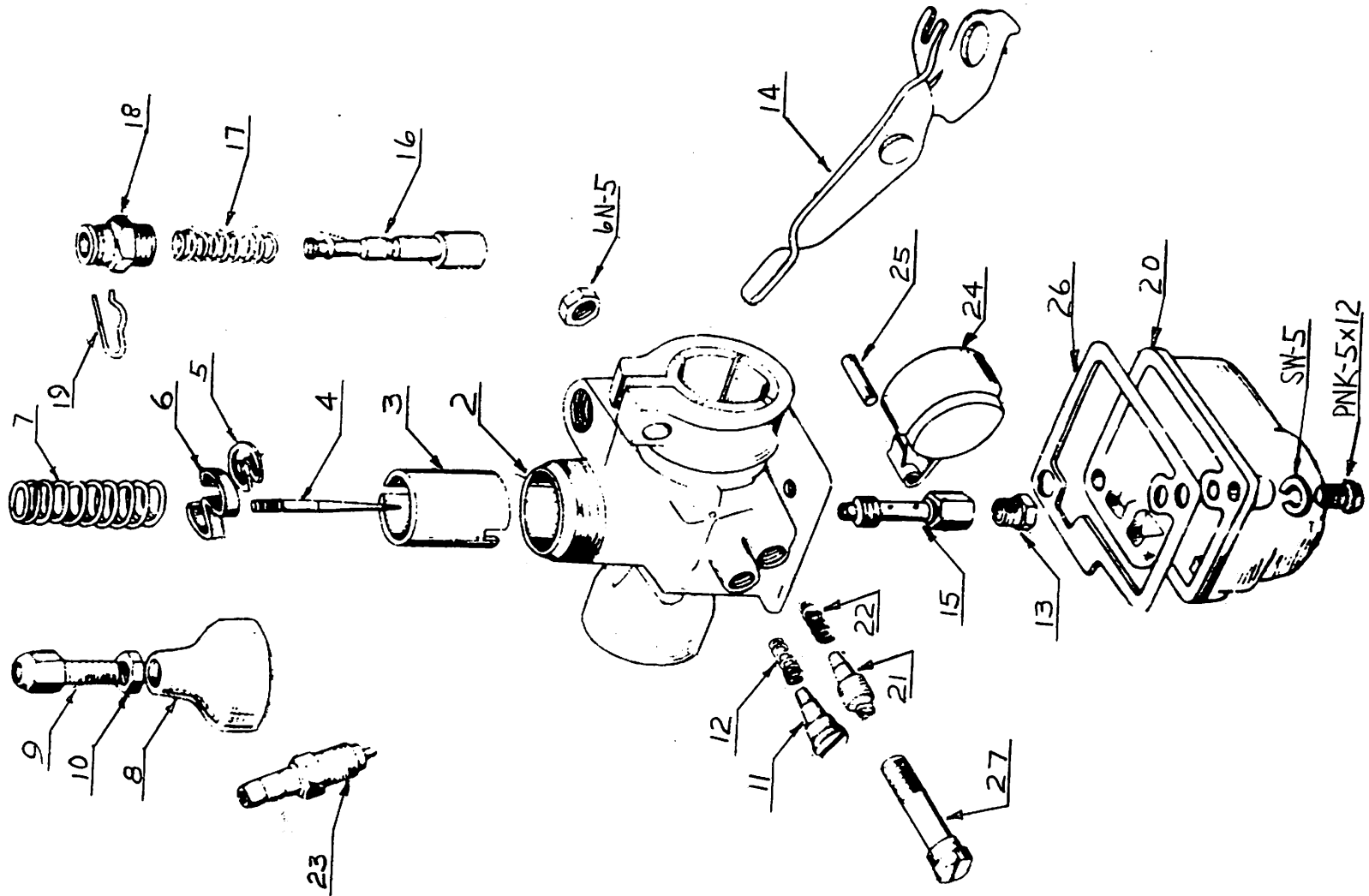
INDEX NO.	PARTS NO.	PARTS NAME	UNIT	INTERCHANGE-ABILITY		REMARKS
				D	S	
1	2620-3000	Kick shaft	1	o	o	
2	2631-3001	Kick gear	1	o	o	
3	2635-3000	Stopper (ratchet arm)	1	o	o	
4	2632-3004	Ratchet arm	1	o	o	
5	2633-3001	Ratchet	1	o	o	
6	2634-3000	Spring (ratchet)	1	o	o	
7	2636-3000	Return spring (kick)	1	o	o	
8	2637-3001	Hook plate	1	o	o	
9	09006-101	Circlip (15mm)	1	o	o	
10	09041-106	Washer (15mm)	1	o	o	
11	09041-105	Washer (14mm)	1	o	o	
12	NOT USED	Rubber cap (kick)	1	o	o	
13	2680-3100	Kick pedal assembly	1	o	o	Includes No. 14-18
14	2681-3010	Kick arm	1	o	o	
15	2690-3010	Kick pedal	1	o	o	Includes No. 16
16	2683-3011	Pedal rubber (kick)	1	o	o	
17	2684-5000	Spring washer (kick pedal)	1	o	o	
18	0411-1022	Washer (kick pedal)	1	o	o	



### COVER, AIR CLEANER

INDEX NO.	PARTS NO.	PARTS NAME	UNIT	INTERCHANGE-ABILITY		REMARKS
				D	S	
1	2151-3003	Fan case	1	o	o	
2	1820-3011	Fan cover	1	o	o	With fan cover cap
3	1822-3000	Fan cover cap	1	o	o	
4	1841-3002	Transmission case cover	1	o	o	
	6201-3003	Air cleaner assembly	1	o	o	Includes No. 5-6
5	6211-3000	Element comp. (air cleaner)	1	o	o	
6	6201-3003	Cover (air cleaner)	1	o	o	
7	6241-3010	Air pipe	1	o	o	
8	2153-3001	Dust cover	1	o	o	
9	1843-3000	Spacer (fan case)	1	o	o	

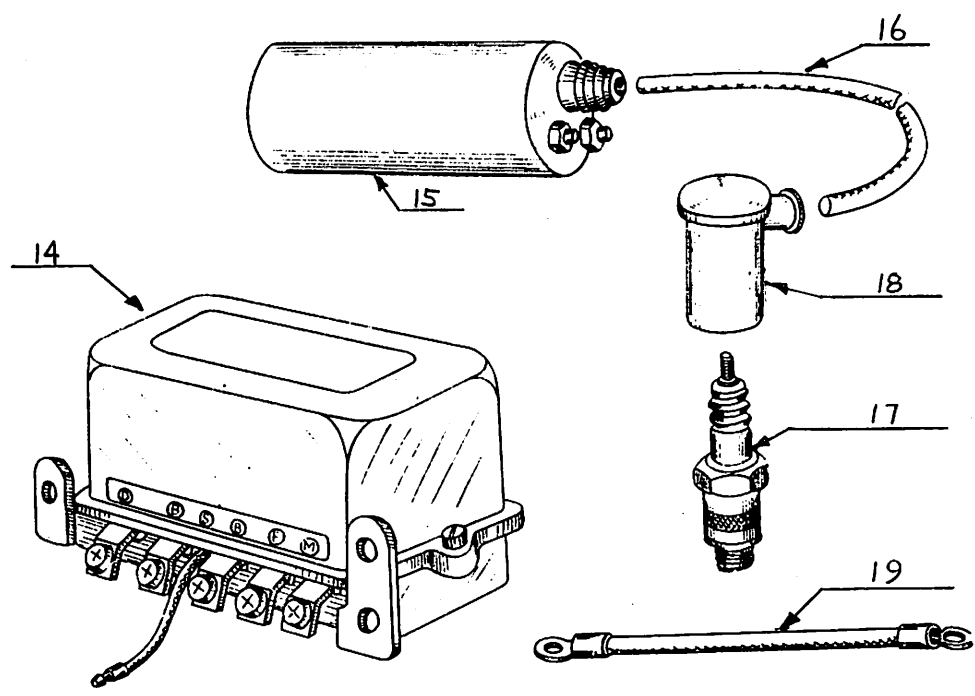
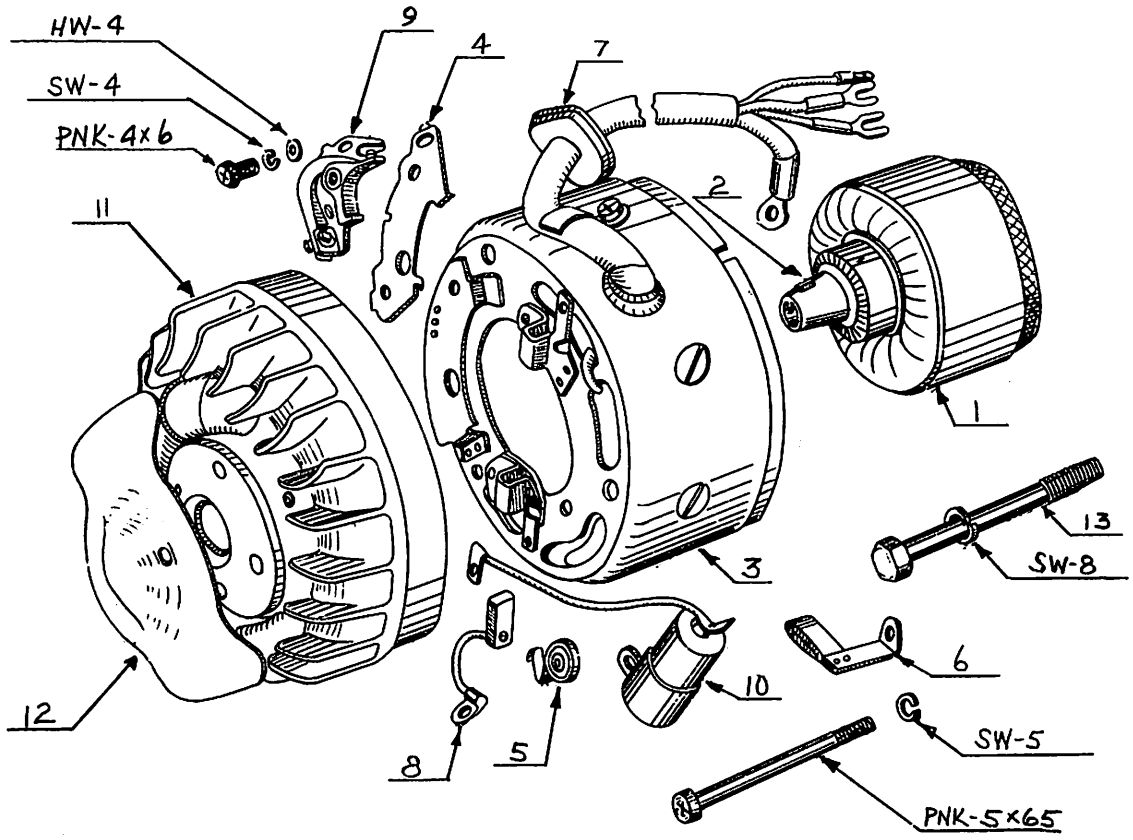




CARBURETOR (MIKUNI BRAND)

INDEX NO.	PARTS NO.	PARTS NAME	UNIT	INTERCHANGE- ABILITY		REMARKS
				D	S	
1	1600-3005	Carburetor assembly	1	o	o	Includes No. 2-27
2	1611-3021	Mixing chamber body	1	o	o	
3	1614-3021	Throttle valve	1	o	o	
4	1615-3021	Jet Needle	1	o	o	
5	1616-3021	Clip (needle)	1	o	o	
6	1617-3021	Spring seat	1	o	o	
7	1618-3020	Spring (throttle valve)	1	o	o	
8	1619-3020	Mixing chamber top	1	o	o	
9	1622-3020	Cable adjuster	1	o	o	
10	1623-3020	Lock nut, adjuster	1	o	o	
11	1627-3021	Idle adjuster	1	o	o	
12	1628-3010	Spring (idle adjuster)	1	o	o	
13	JET 90 NLA	Main jet	1	o	o	
14	1640-3012	Starter lever assembly	1	o	o	
15	1633-3021	Needle jet	1	o	o	
16	1645-3010	Starter plunger	1	o	o	
17	1646-3010	Spring (plunger)	1	o	o	
18	1647-3010	Cap (plunger)	1	o	o	
19	1648-3010	Clip (plunger)	1	o	o	
20	1656-3021	Float chamber body	1	o	o	
21	1631-3010	Pilot air screw	1	o	o	
22	1632-3010	Spring (air screw)	1	o	o	
23	1660-3010	Float valve assembly	1	o	o	
24	1666-3020	Float	1	o	o	
25	1667-3020	Float pin	1	o	o	
26	1657-3020	Packing (float chamber)	1	o	o	
27	1613-3020	Clamp screw	1	o	o	

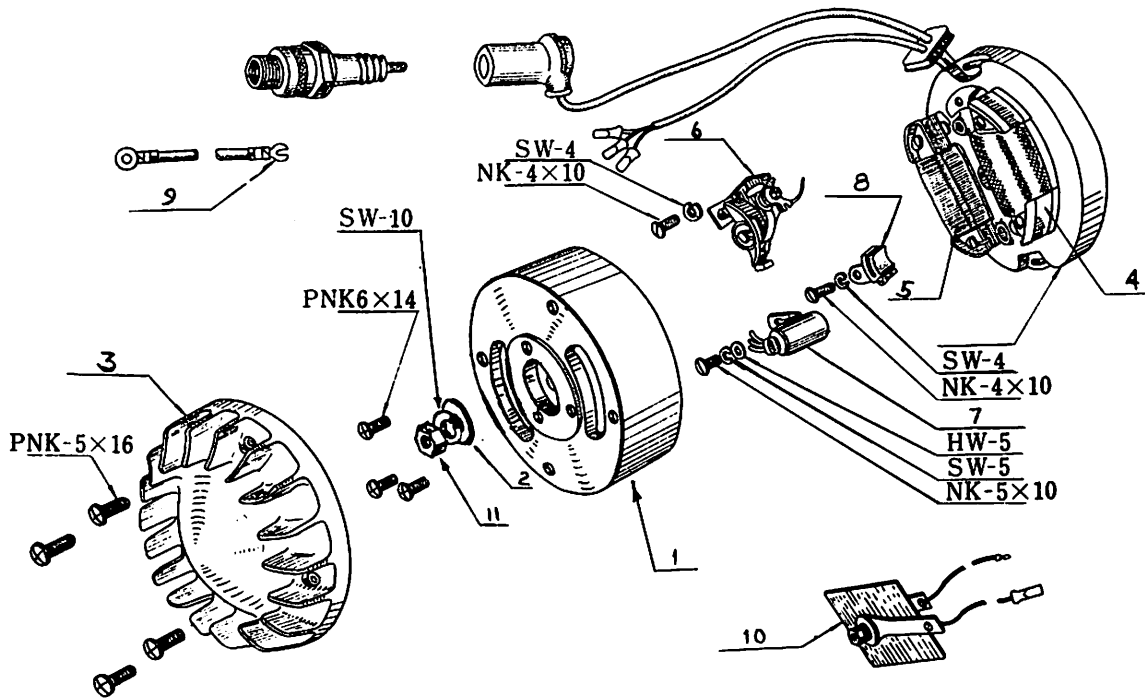
12 Volt



CELL DYNAMO (STARTER - GENERATOR)

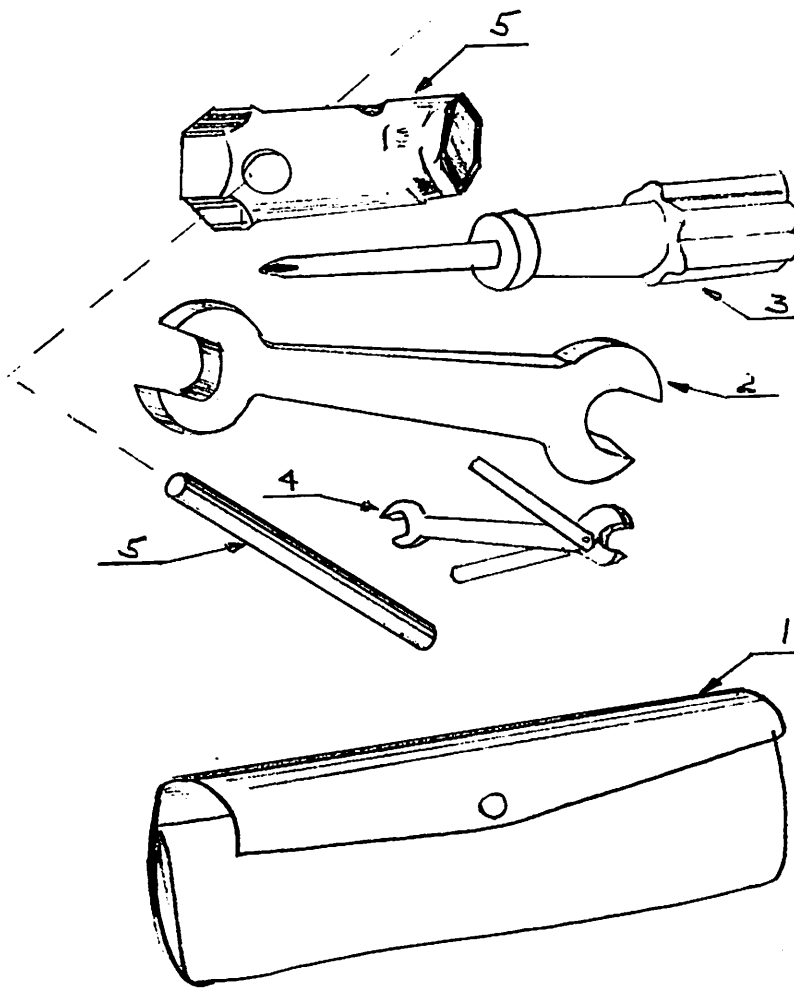
INDEX NO.	PARTS NO.	PARTS NAME	UNIT	INTERCHANGE-		REMARKS
				ABILITY D	S	
	1702-3002	Cell dynamo assembly	1	o		
1	1725-3001	Rotor	1	o		
2	0671-3010	Key (rotor)	1	o		
	1720-3001	Stator assembly	1	o		Includes No. 3-10
3	1720-3001	Stator	1	o		
4	1751-3001	Breaker base	1	o		
5	1723-3001	Spring (brush)	2	o		
6	1754-3001	Oil felt	1	o		
7	1755-3001	Grommet (cell dynamo)	1	o		
8	1722-3001	Carbon brush	2	o		
9	1752-3001	Contact breaker assembly	1	o		
10	1753-3001	Condenser	1	o		
11	1811-3010	Fan	1	o		
12	1812-3002	Fan cap	1	o		
13	1726-3001	Bolt (cell dynamo)	1	o		
14	8703-3001	Relay assembly	1	o		
15	8501-3000	Ignition coil	1	o		
16	8531-3000	High tension wire	1	o		
17	B6 N6K	Spark plug	1	o	o	
18	8521-3000	Plug cap	1	o	o	
19	1785-3000	Ground wire	1	o		

6 volt



FLYWHEEL MAGNETO

INDEX NO.	PARTS NO.	PARTS NAME	UNIT	INTERCHANGE-ABILITY		REMARKS
				D	S	
	1701-3014	Flywheel magneto	1		o	Includes No. 1-8
1	1718-3013	Flywheel	1		o	
2	09041-108	Washer (10mm)	1		o	
3	1811-3010	Fan	1		o	Includes No. 4-8
	1710-3011	Magneto frame assembly	1		o	
4	1712-3100	Ignition coil	1		o	
5	1714-3010	Lighting coil	1		o	
6	1752-5000	Contact breaker assembly	1		o	
7	1753-3010	Condenser	1		o	
8	1754-3020	Oil felt	1		o	
9	1785-3010	Ground wire	1		o	
10	8702-3001	Selenium rectifier	1		o	
11	E-19113	Nut (flywheel)	1		o	
	B-6 N6K	SPARK Plug				



STANDARD TOOLS

INDEX NO.	PARTS NO.	PARTS NAME	UNIT	INTERCHANGE-ABILITY		REMARKS
				D	S	
	<i>Tool Kit</i>	Standard tool set	1	o	o	Includes No.1-5
1	9211-3001	Tool bag	1	o	o	
2	9216-3000	10 x 14mm double head spanner	1	o	o	
3	9231-3000	Screw driver	1	o	o	
4	9212-3001	Dynamo spanner	1	o	o	
5	9218-3000	Box spanner	1	o	o	Consists of two pieces

	UNIT	REMARKS
	1	Rubber joint stopper (1)
	2	Fan cap (2)
	4	Rear turn signal (4)
	4	Tank mark (4)
	2	Rear turn signal (2)
	2	Rear turn signal (2)
n	2	Rear cushion (2)
	1	Head cover (1)
	2	Combination light (2)
	2	Cell dynamo (2)
	4	Cell dynamo (4)
	2	Steering lock (2)
	1	Rear frame (1)
t	2	Rear shock absorber (2)
	2	Pinion gear (1), magneto (1)
11	11	Tank (1), Engine (2), bottom link (4), rear view mirror (1), link bolt (1), seat (2)
	7	Chain adjuster (4), brake lever (2), change pedal (1)
	9	Wire clamp (2), taillight (3), carburetor (1), ignition coil (2)
	5	Rubber joint stopper (1), speedometer (2), taillight (2)
	2	Cell dynamo (1), magneto (1)
	5	Carburetor (1), rear turn signal (4)
	2	Stand (2)
	23	Muffler (4), carrier (4), tank (3), engine (7), foot rest (2), link bolt (1), seat (2)
	30	Ignition (2), fan cover (3), relay (3), mission case cover (3) change pedal (1), clamp (stiffner) (1), head cover (4), chain case (4), brake rod (1) cylinder head (4), thrust receiver (2), main switch (2)