



# Taka

by rockford

## PARTS CATALOGUE

*Rockford Motors inc.*

1911 HARRISON AVENUE • ROCKFORD, ILLINOIS 61101

## CONTENTS

### FIGURE NUMBER

### DESCRIPTION

#### Engine

1	Crank Case
2	Cylinder
3	Crank Shaft
4	Crankcase Cover - Oil Pump
5	Transmission
6	Clutch
7	Change Shaft and Shift Drum
8	Kick Starter
9	Carburetor
10	Magneto

#### Body

11	Frame
12	Front Fork and Handle Bar
13	Rear Frame and Rear Cushion
14	Front Wheel
15	Rear Wheel
16	Foot Rest and Brake Pedal
17	Fuel Tank and Seat
18	Air Cleaner - Side Cover - Tools
19	Exhaust System
20	Control System
21	Handle Bar Grips
22	Head Lamp and Tail Lamp

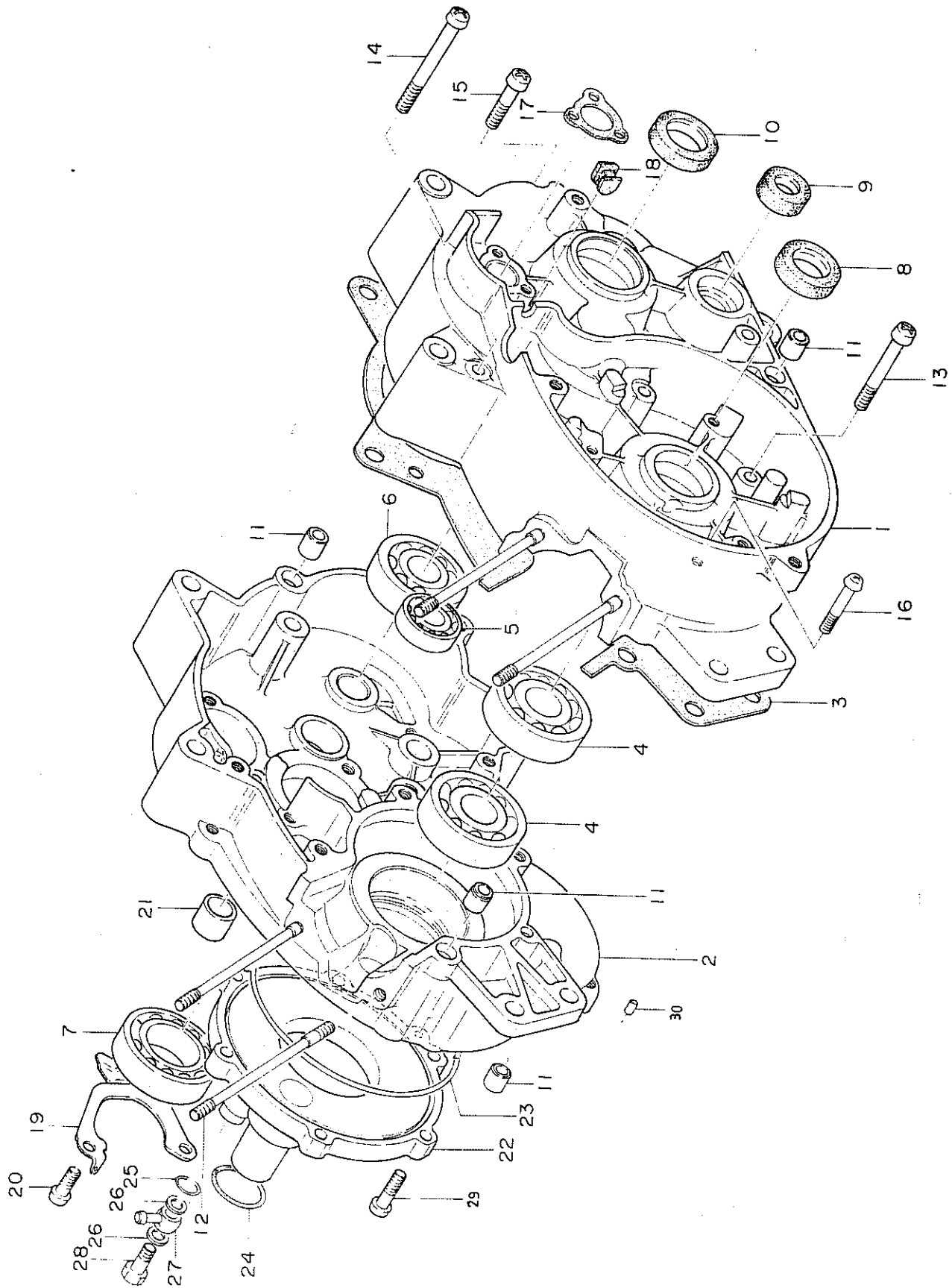


FIGURE 1 - CRANK CASE

FIGURE 1 - CRANK CASE

<u>REF.</u> <u>NO.</u>	<u>PART</u> <u>NUMBER</u>	<u>DESCRIPTION</u>	<u>QUANTITY</u> <u>REQUIRED</u>
1	2110 5400 CBK	Crank Case LH	1
2	3130 5400 CBK	Crank Case RH	1
3	2181 5010	Crank Case Gasket	1
4	<del>07</del> 6304 03	6304 Ball Bearing	2
5	<del>07</del> 6201 03	6201 Ball Bearing	1
6	07 6303 01	6303 Ball Bearing	1
7	<del>07</del> 6006 01	6006 Ball Bearing	1
8	09090 106	20327 Oil Seal	1
9	09090 101	12227 Oil Seal	1
10	09090 107	21357 Oil Seal	1
11	09057 101	6X10X10 B Dowel	4
12	2121 5400	8X146mm Stud Bolt	4
13	0311 0645	6X45mm Screw	3
14	0311 0655	6X55mm Screw	4
15	0311 0625	6X25mm Screw	1
16	0311 0645	6X45mm Screw	1
17	1763 5000	Switch Cover Packing	1
18	227 34301 200	Switch Wire Grommet	1
19	2145 5000	Counter Shaft Bearing Holder	1
20	0311 0614	6X14mm Screw	3
21	2133 5000	Drive Shaft Bushing	1
22	1431 5000	Rotary Valve Cover	1
23	09066 103	100 O-Ring	1
24	09066 104	23 O-Ring	1
25	09066 111	#10 O-Ring	1
26	09065 103	6mm Aluminum Gasket	2
27	1565 8000	Union Connector	1
28	1564 8000	Union Bolt	1
29	0311 0620	6X16mm Screw	6
30	09057 101	4X8A Dowel	1

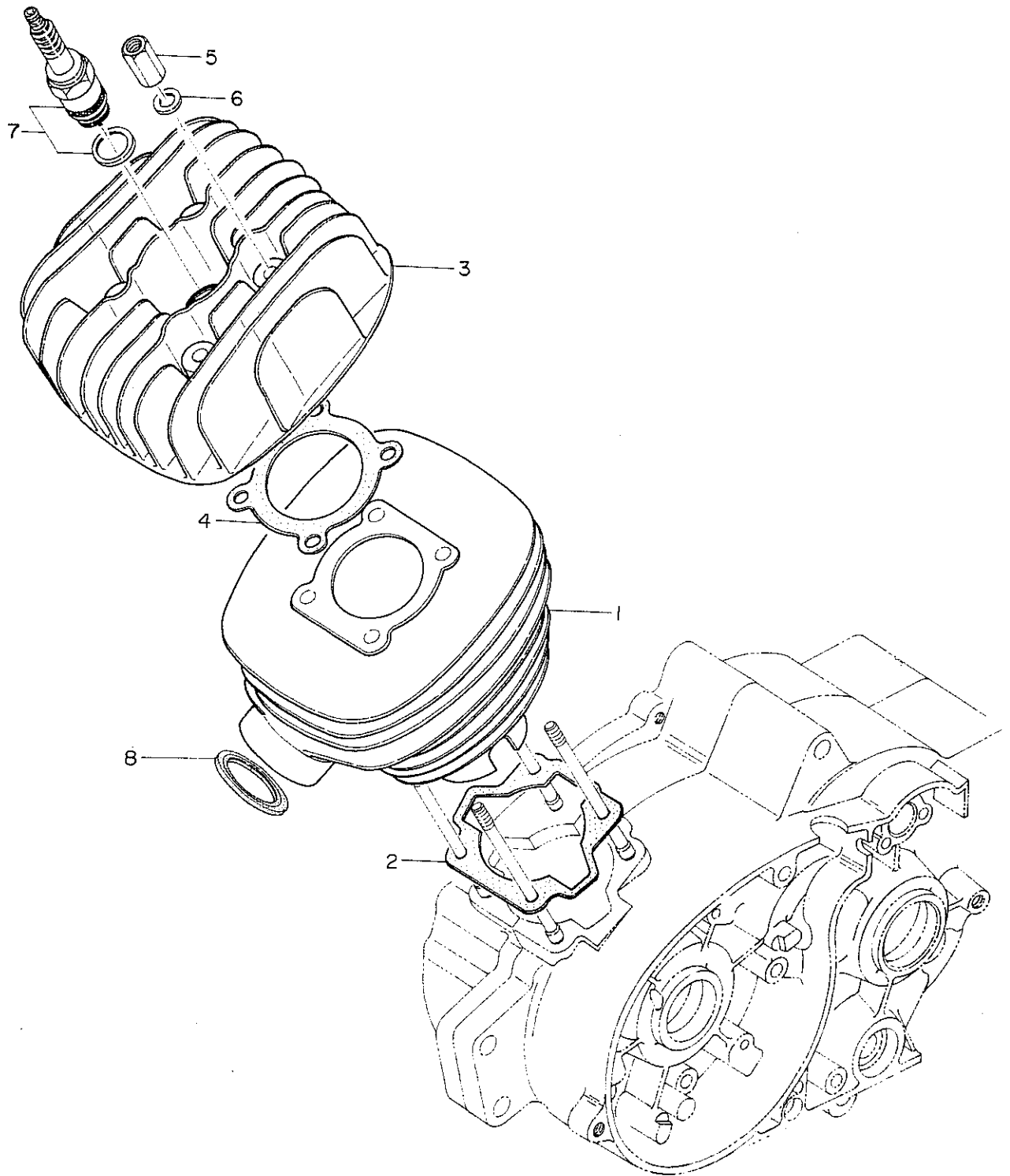


FIGURE 2 – CYLINDER

FIGURE 2 - CYLINDER

<u>REF.</u> <u>NO.</u>	<u>PART</u> <u>NUMBER</u>	<u>DESCRIPTION</u>	<u>QUANTITY</u> <u>REQUIRED</u>
1	1121 5410 CBK	Cylinder	1
2	1143 5400	Cylinder Packing	1
3	1111 5400 CBK	Cylinder Head	1
4	1141 5400	Cylinder Head Gasket	1
5	1115 5400	Cylinder Head Nut	4
6	0411 0818	8mm Washer	4
7	B8HS	Spark Plug	1
8	1142 5400	Exhaust Pipe Packing	1

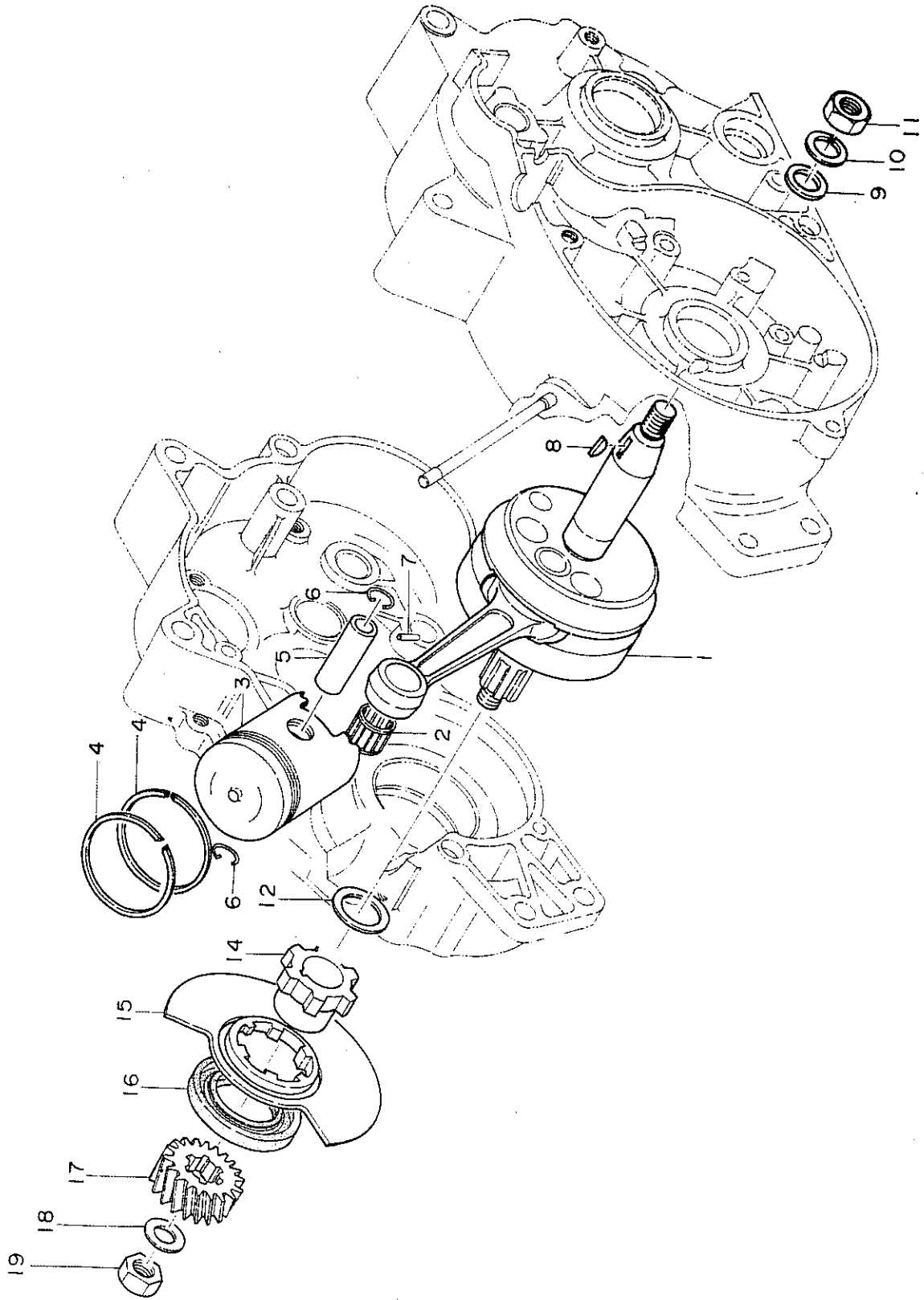


FIGURE 3 — CRANK SHAFT

FIGURE 3 - CRANK SHAFT

<u>REF.</u> <u>NO.</u>	<u>PART</u> <u>NUMBER</u>	<u>DESCRIPTION</u>	<u>QUANTITY</u> <u>REQUIRED</u>
1	046 12601 800	Crank Shaft Complete	1
2	1333 5010	14 1817 Needle Bearing	1
3	1341 5410	Piston	1
4	1305 5400	Piston Ring Set	2
5	1381 5400	Piston Pin	1
6	1382 5000	Piston Pin Circlip	2
7	09063 104	3 X 10 A Dowel	1
8	068 11501 200	3 X 15 Woodruff Key	1
9	0411 1022	10mm Washer	1
10	0431 1025	10mm Spring Washer	1
11	0212 1000	10mm Nut	1
12	09049 106	20X0.3 Crank Shaft Shim	2-4
14	1451 3210	Crank Shaft Collar	1
15	1412 5600	Rotary Valve Collar	1
16	09090 108	25478 Oil Seal	1
17	1385 5000	Drive Pinion	1
18	09046 101	10mm Wave Washer	1
19	09029 103	10mm Left Thread Nut	1



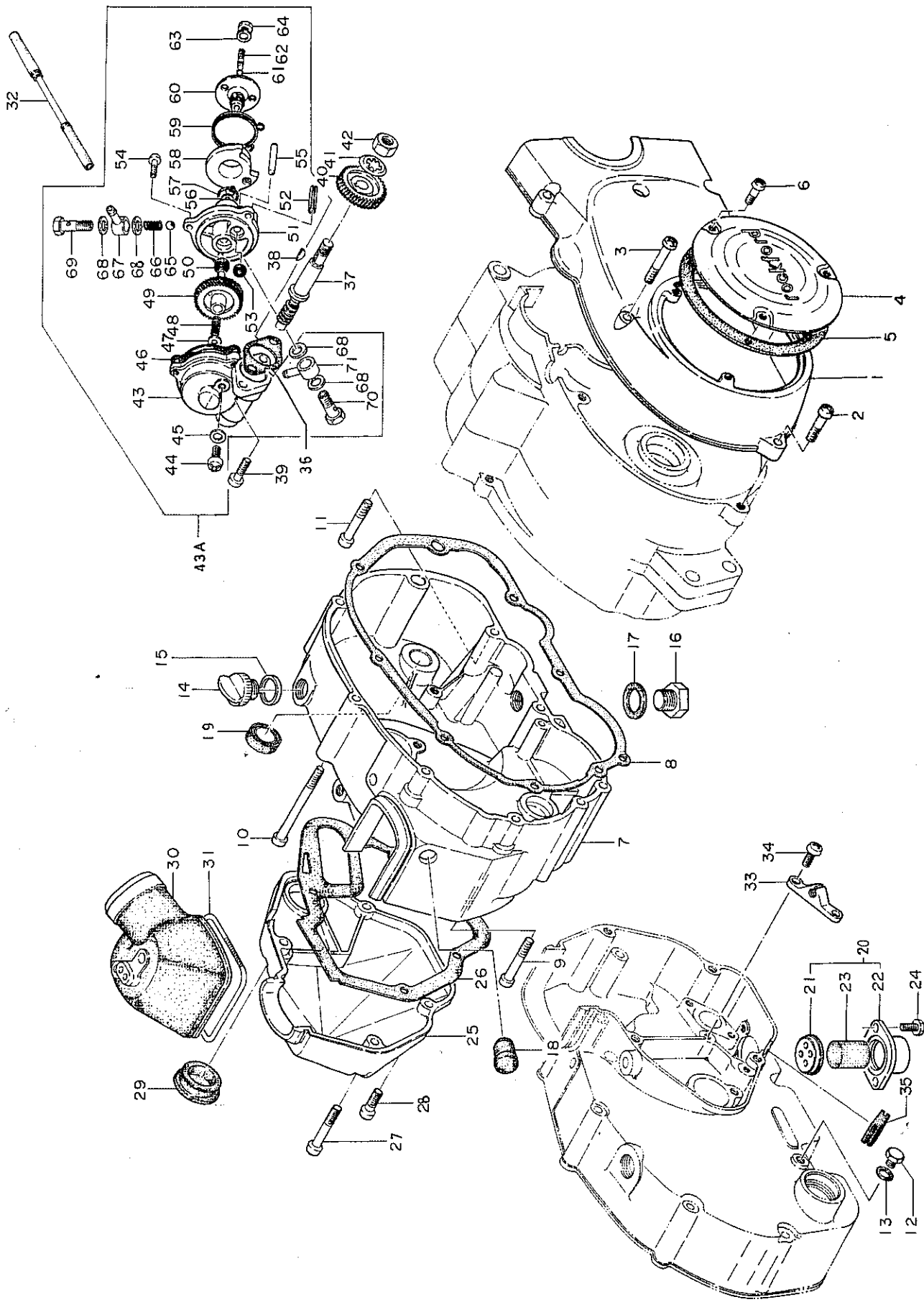


FIGURE 4 — CRANKCASE COVER AND OIL PUMP

FIGURE 4 - CRANKCASE COVER AND OIL PUMP

<u>REF. NO.</u>	<u>PART NUMBER</u>	<u>DESCRIPTION</u>	<u>QUANTITY REQUIRED</u>
1	2151 5020 CBK	Crank Case Cover LH	1
2	0311 0625	6 X 25mm Screw	1
3	0311 0635	6 X 35mm Screw	3
4	243 34501 200	Contact Breaker Cover	1
5	2184 5000	Contact Cover Gasket	1
6	0311 0510	5 X 10mm Screw	3
7	2160 5010	Crank Case Cover Comp. RH	1
8	2183 5010	Crank Case Cover Gasket	1
9	0311 0645	6 X 45mm Screw	2
10	0311 0665	6 X 65mm Screw	4
11	0311 0635	6 X 35mm Screw	2
12	0111 0608	6 X 8mm Bolt	1
13	09064 102	6mm Fiber Gasket	1
14	235 34301 200	Oil Filler Plug	1
15	236 34301 200	Oil Filler Plug Gasket	1
16	09058 102	#16 Drain Plug	1
17	09065 102	#16 Aluminum Gasket	1
18	2168 5000	#12 Rubber Plug	1
19	09090 103	#15257 Oil Seal	1
20	233 34501 800	Drain Filter Complete	1
21	588 34501 200	Drain Pipe Cap	1
22	233 34501 200	Drain Pipe Body	1
23	249 34501 200	Drain Sponge	1
24	990 21050 100	5X 10mm Bolt	2
25	2176 5020 CBK	Carburetor Cover	1
26	2185 5010	Carburetor Cover Gasket	1
27	0311 0635	6X 35mm Screw	1
28	0311 0620	6X 20mm Screw	3
29	2179 5000	Release Screw Cap	1
30	2177 5020	Carburetor Cap	1
31	2178 5010	Carburetor Cap Ring	1
32	1566 5010	Oil Tube Complete	1
33	1582 5012	Wire Bracket	1
34	0311 0610	6X 10mm Screw	2
35	1587 5010	Pump Adjust Cap	1
36	1563 5010	Pump Gasket	1
37	1555 5010	Worm Shaft	1
38	0671 2510	2.5X 10 Woodruff Key	1
39	0311 0516	5X 16mm Screw	2
40	1552 5010	Pump Gear "B"	1
41	0451 0815	8mm Tooth Washer	1
42	0231 0800	8mm Nut	1
43A	900 34501 900	Oil Pump Assembly	1
43	901 34501 800	Gear Case Complete	1
44	980 11050 070	5 X 7mm Screw	1
45	928 34501 200	5mm Fiber Packing	1
46	919 34501 200	Gear Case Gasket	1
47	935 34501 200	4mm Thrust Washer	1
48	908 34501 200	Plunger Spring	1
49	905 34501 800	Plunger Complete	1
50	999 66459 801	4.5mm Oil Seal	1
51	912 34501 800	Pump Case Complete	1
52	993 24303 200	3 X 20mm Spring Pin	1
53	999 66049 301	4mm Oil Seal	1
54	0311 0412	4 X 12mm Screw	3
55	915 34501 200	Rod	1
56	916 34501 200	5mm Copper Gasket	1
57	932 34501 200	9mm O-Ring	1
58	909 34501 200	Control Lever	1
59	910 34501 200	Lever Return Spring	1
60	914 34501 200	Stopper Bolt	1
61	931 34501 200	2.5mm O-Ring	1
62	911 34501 200	Adjust Screw	1
63	992 01040 001	4mm Washer	1
64	991 01040 013	4mm Nut	1
65	0611 0108	Ball 1/8" (3-17°)	1
66	923 34501 200	Check Ball Spring B	1
67	1565 8000	Union Connector	1
68	933 34501 200	6mm Aluminum Gasket	4
69	921 34501 200	Union Bolt	1
70	934 34501 200	Union Bolt B	1
71	1571 5010	Union Connector	1

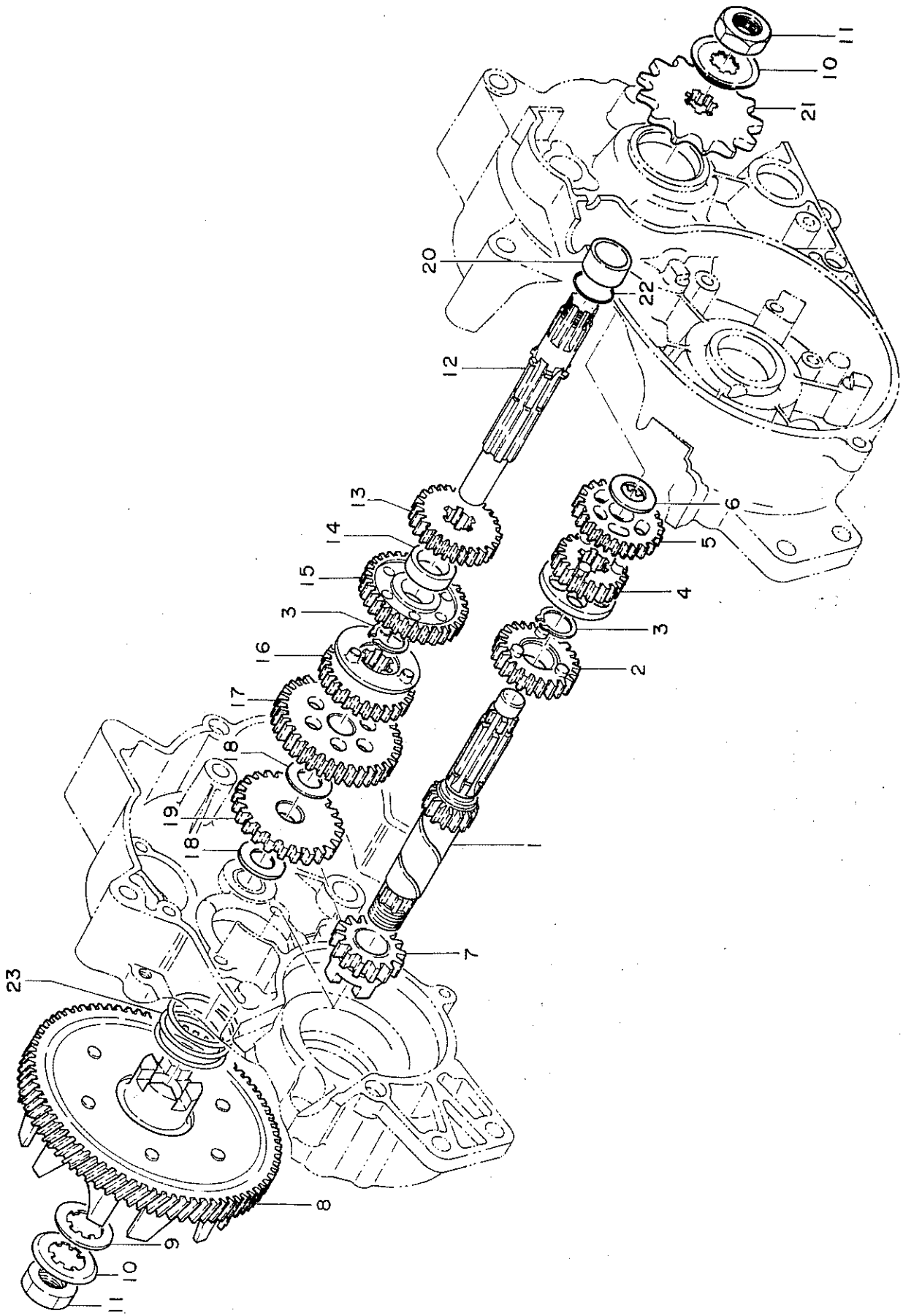


FIGURE 5 — TRANSMISSION

FIGURE 5 - TRANSMISSION

<u>REF.</u> <u>NO.</u>	<u>PART</u> <u>NUMBER</u>	<u>DESCRIPTION</u>	<u>Q UANTITY</u> <u>REQUIRED</u>
1	2421 5001	Counter Shaft	1
2	2431 5000	3rd Gear A	1
3	09002 103	#17B Snap Ring	2
4	2426 5000	2nd Gear A	1
5	2436 5000	4th Gear A	1
6	09048 101	#12 Thrust Washer	1
7	2610 5000	Kick Starter Gear A Complete	1
8	2410 5001	Driven Gear Complete	1
9	09048 106	#17 Thrust Washer	1
10	09047 103	#17 Lock Washer	2
11	09021 102	#16 Nut	2
12	2446 5001	Drive Shaft	1
13	2466 5001	4th Gear B	1
14	2481 5000	Drive Shaft Spacer	1
15	2456 5000	2nd Gear B	1
16	2461 5000	3rd Gear B	1
17	2451 5000	1st Gear B	1
18	09048 102	#13 Thrust Washer	2
19	2616 5000	Kick Starter Gear B	1
20	2483 5000	Drive Sprocket Spacer	1
21	2484 5400	Drive Sprocket	1
22	09066 119	#17 O-Ring	1
23	2424 5000	Driven Gear Spring	1

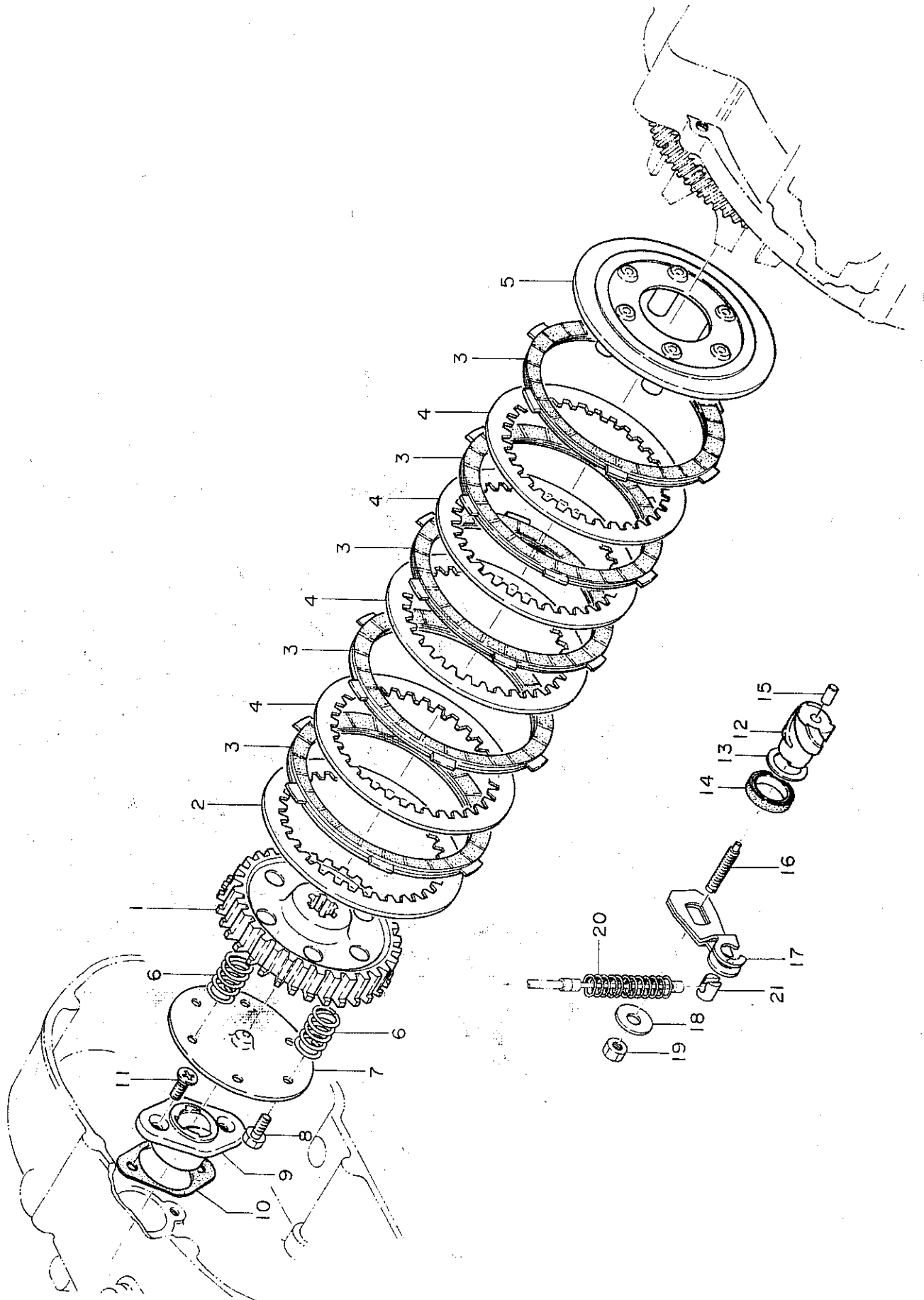


FIGURE 6 - CLUTCH

FIGURE 6 - CLUTCH

<u>REF.</u> <u>NO.</u>	<u>PART</u> <u>NUMBER</u>	<u>DESCRIPTION</u>	<u>QUANTITY</u> <u>REQUIRED</u>
1	2221 5000	Clutch Hub	1
2	2216 5000	Outer Plate	1
3	2214 5000	Friction Plate	5
4	2215 5000	Inner Plate	4
5	2210 5000	Pressure Plate Complete	1
6	2218 5010	Clutch Spring	6
7	2227 5000	Clutch Set Plate Complete	1
8	0113 0512	5 X 12mm Bolt	6
9	2264 8000	Release Screw	1
10	2186 5000	Release Screw Gasket	1
11	0331 0614	6 X 14mm Screw	2
12	2265 5000	Release Push Screw	1
13	2272 5000	Release Guide Washer	1
14	09090 102	#15213 Oil Seal	1
15	09056 105	6 X 10 Dowel	1
16	2267 8000	Release Adjust Screw	1
17	2261 5010	Release Arm	1
18	2268 5000	Release Adjust Screw Washer	1
19	0231 0600	6mm Nut	1
20	2271 5010	Release Arm Return Spring	1
21	2275 5010	Release Arm Pin	1

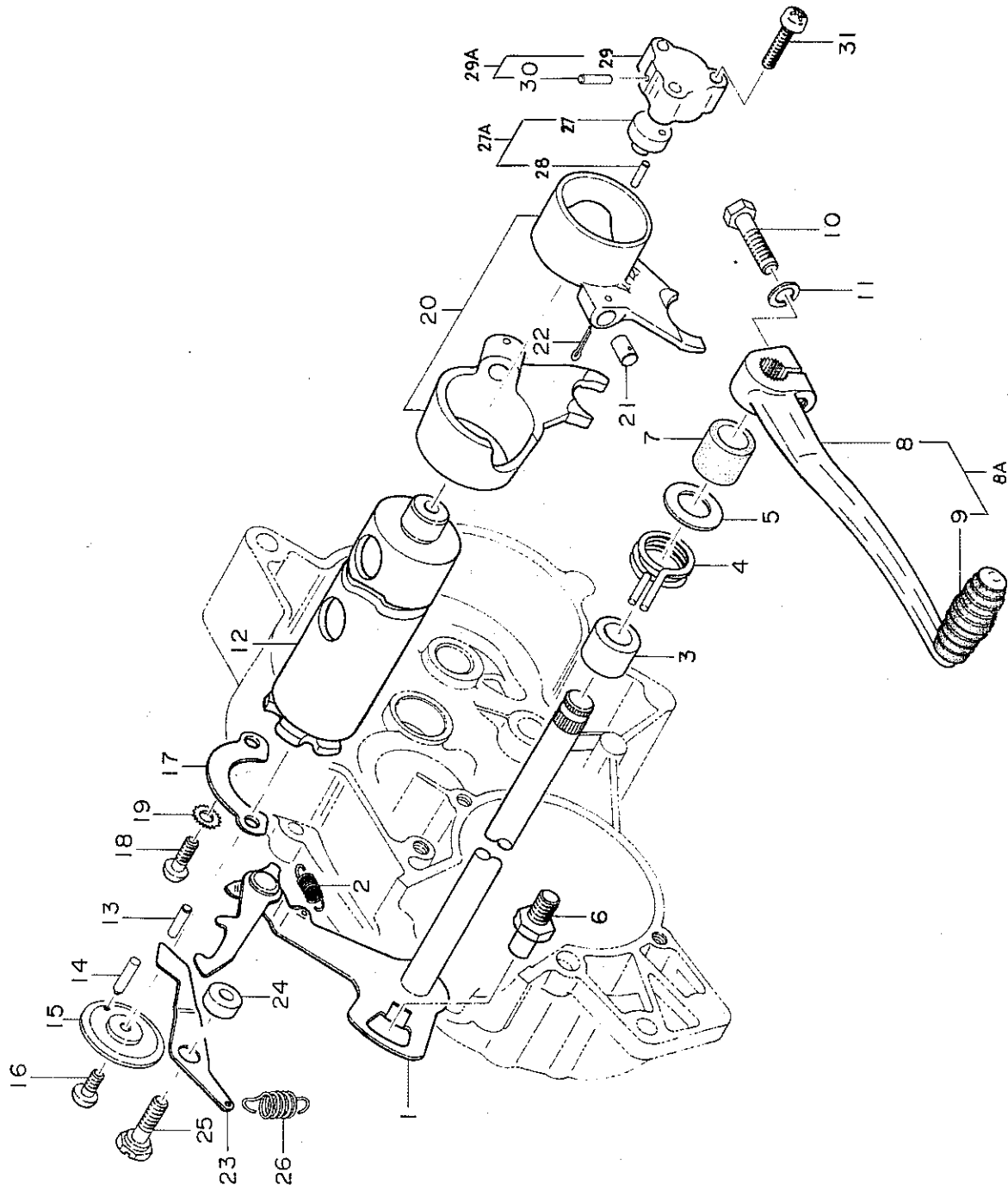


FIGURE 7 — CHANGE SHAFT AND SHIFT DRUM

FIGURE 7 - CHANGE SHAFT AND SHIFT DRUM

<u>REF. NO.</u>	<u>PART NUMBER</u>	<u>DESCRIPTION</u>	<u>QUANTITY REQUIRED</u>
1	2510 5002	Change Arm Complete	1
2	2517 5000	Drum Shifter Spring	1
3	2557 8000	Change Shaft Spacer	1
4	2551 5000	Change Shaft Return Spring	1
5	2552 3002	Change Shaft Spring Seat	1
6	2553 5000	Change Arm Stopper Pin	1
7	2156 5000	Gear Change Shaft Rubber	1
8A	509 34501 900	Change Pedal Assembly	1
8		Gear Change Pedal	1
9	510 34301 200	Change Pedal Rubber	1
10	0113 0620	6 X 20mm Bolt	1
11	0431 0615	6mm Spring Washer	1
12A	2502 5001	Shift Drum Assembly	1
12		Gear Shift Drum	1
13	2522 3200	Shift Pin A	4
14	2523 3200	Holder Stopper Pin	1
15	2524 3200	Shift Pin Holder	1
16	0311 0512	5 X 12mm Screw	1
17	2549 5001	Drum Guide Plate	1
18	0311 0614	6 X 14mm Screw	2
19	0451 0611	6mm Internal Toothed Washer	2
20	2541 5001	Shift Fork	2
21	2544 3200	Fork Guide	2
22	0551 2525	2.5 X 25 Split Pin	2
23	526 34501 200	Drum Stopper Arm	1
24	2537 5000	Drum Stopper Spacer	1
25	2536 5000	Drum Stopper Bolt	1
26	2538 5000	Drum Stopper Spring	1
27A	543 34401 800	Shift Stopper Boss Complete	1
27	543 34401 200	Shift Stopper Boss	1
28	993 22030 200	Parallel Pin 3 X 12	1
29A	542 34401 800	Shift Stopper Cover Complete	1
29	542 34401 200	Shift Stopper Cover	1
30	993 20020 142	Taper Pin 2 X 14mm	1
31	0311 0522	5 X 22mm Screw	3



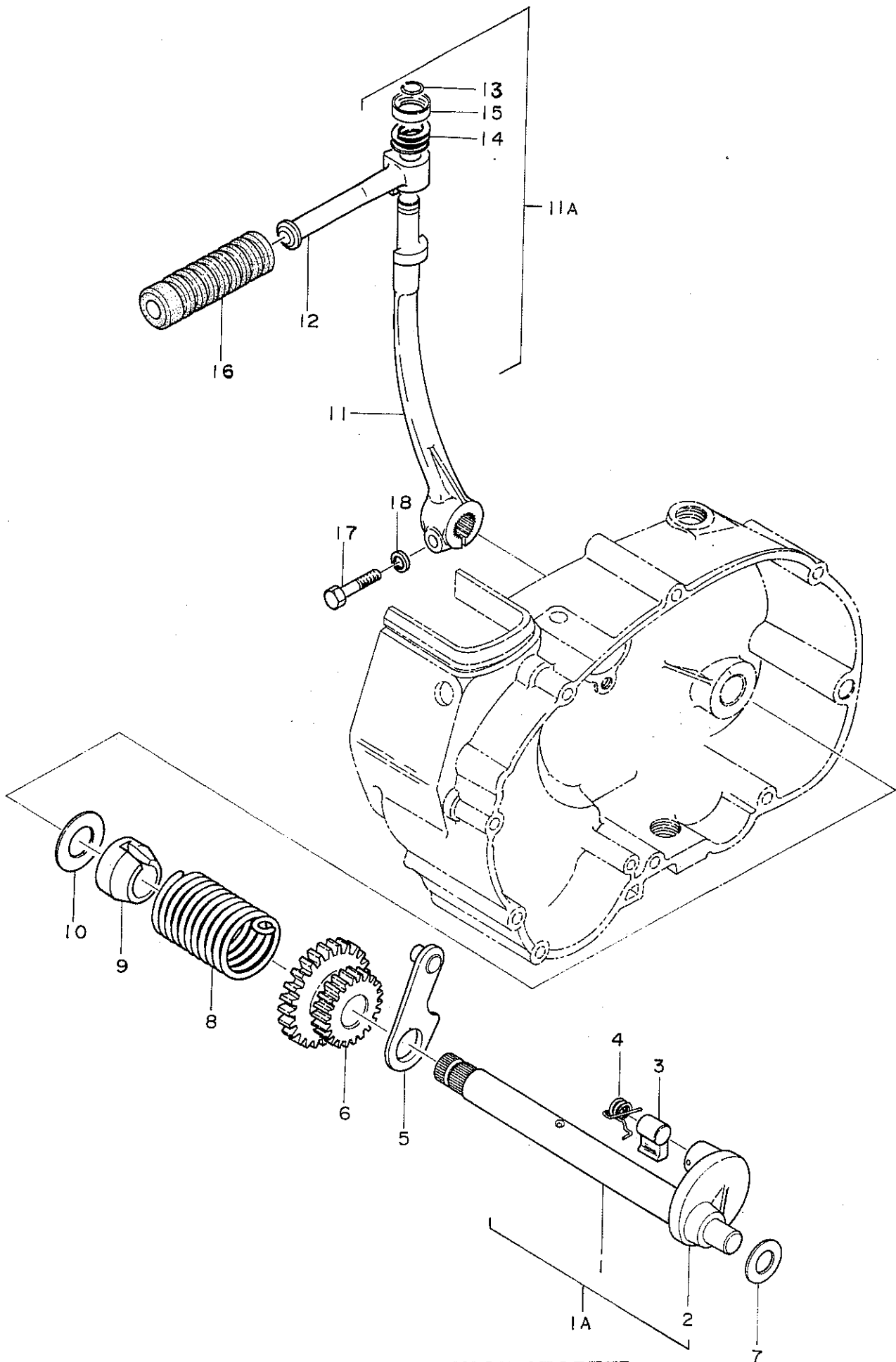
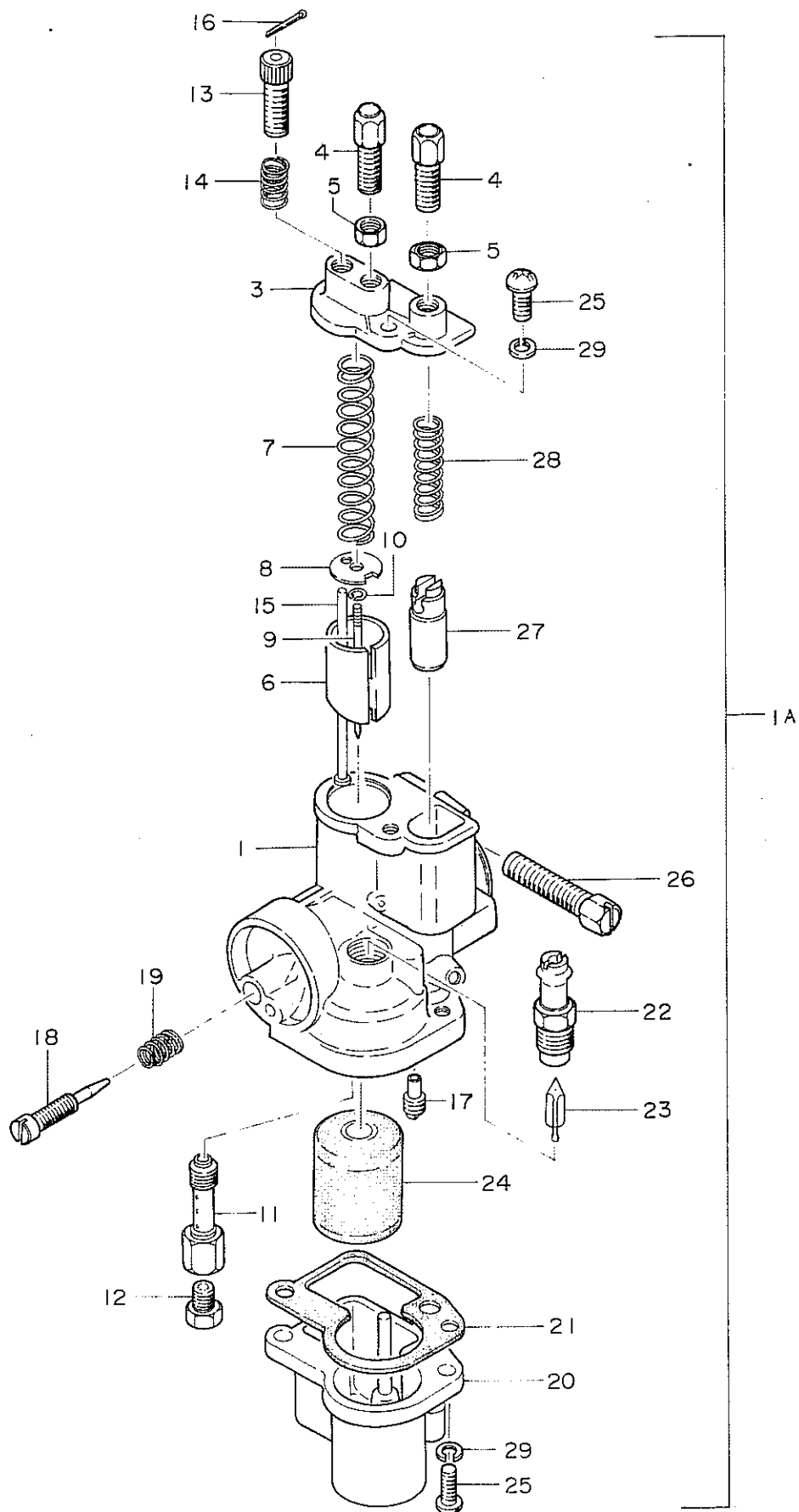


FIGURE 8 - KICK STARTER

FIGURE 8 - KICK STARTER

<u>REF.</u> <u>NO.</u>	<u>PART</u> <u>NUMBER</u>	<u>DESCRIPTION</u>	<u>QUANTITY</u> <u>REQUIRED</u>
1A		Kick Starter Assembly	1
1	2621 5002	Kick Starter Shaft	1
2	2632 5000	Kick Starter Ratchet Arm	1
3	2633 5000	Ratchet	1
4	2634 5000	Ratchet Spring	1
5	2635 5000	Starter Ratchet Stopper Comp.	1
6	2631 5000	Kick Starter Gear C	1
7	09048 101	#12 Thrust Washer	1
8	2636 5001	Kick Starter Return Spring	1
9	2638 3200	Return Spring Spacer	1
10	09041 106	#16 Kick Starter Washer	1
11A	547 34501 900	Kick Starter Arm Assembly	1
11	560 34501 200	Kick Starter Arm	1
12	561 34501 200	Kick Starter Pedal	1
13	570 34301 200	Snap Ring	1
14	563 34301 200	Starter Pedal Spring	1
15	992 01100 001	Washer	1
16	562 34301 200	Kick Starter Pedal Rubber	1
17	0113 0625	6 X 25mm Bolt	1
18	0431 0615	6mm Spring Washer	1



**FIGURE 9 – CARBURETOR**

FIGURE 9 - CARBURETOR

<u>REF.</u> <u>NO.</u>	<u>PART</u> <u>NUMBER</u>	<u>DESCRIPTION</u>	<u>QUANTITY</u> <u>REQUIRED</u>
1A	655 20900 900	Carburetor Assembly	1
1		Carburetor Body	1
3	595 20900 200	Body Cap	1
4	597 20800 200	Cable Adjuster	2
5	596 20800 200	Cable Adjuster Lock Nut	2
6	591 20900 200	Throttle Valve	1
7	594 20800 200	Throttle Valve Spring	1
8	619 20800 200	Throttle Spring Seat	1
9	592 20900 200	Jet Needle	1
10	593 20800 200	Jet Needle Clip	1
11	598 20900 200	Needle Jet	1
12	599 20900 200	Main Jet #102	1
12	599 20900 210	Main Jet #100	-
12	599 20900 220	Main Jet #98	-
12	599 20900 230	Main Jet #96	-
13	522 20800 200	Adjuster Screw	1
14	523 20900 200	Adjuster Spring	1
15	524 20900 200	Adjuster Rod	1
16	992 90120 120	Split Pin	1
17	600 20800 200	Starter Jet (Pilot Jet)	1
18	615 20900 200	Air Screw	1
19	616 20800 200	Air Screw Spring	1
20	606 20800 800	Float Chamber	1
21	607 20800 200	Chamber Packing	1
22	602 20800 200	Valve Seat	1
23	603 20800 800	Float Valve	1
24	604 20800 800	Float	1
25	990 11040 100	4X10 mm Screw	3
26	617 20800 200	Body Band Bolt	1
27	610 20900 200	Starter Plunger	1
28	611 20800 200	Plunger Spring	1
29	0431 0410	4mm Spring Washer	3

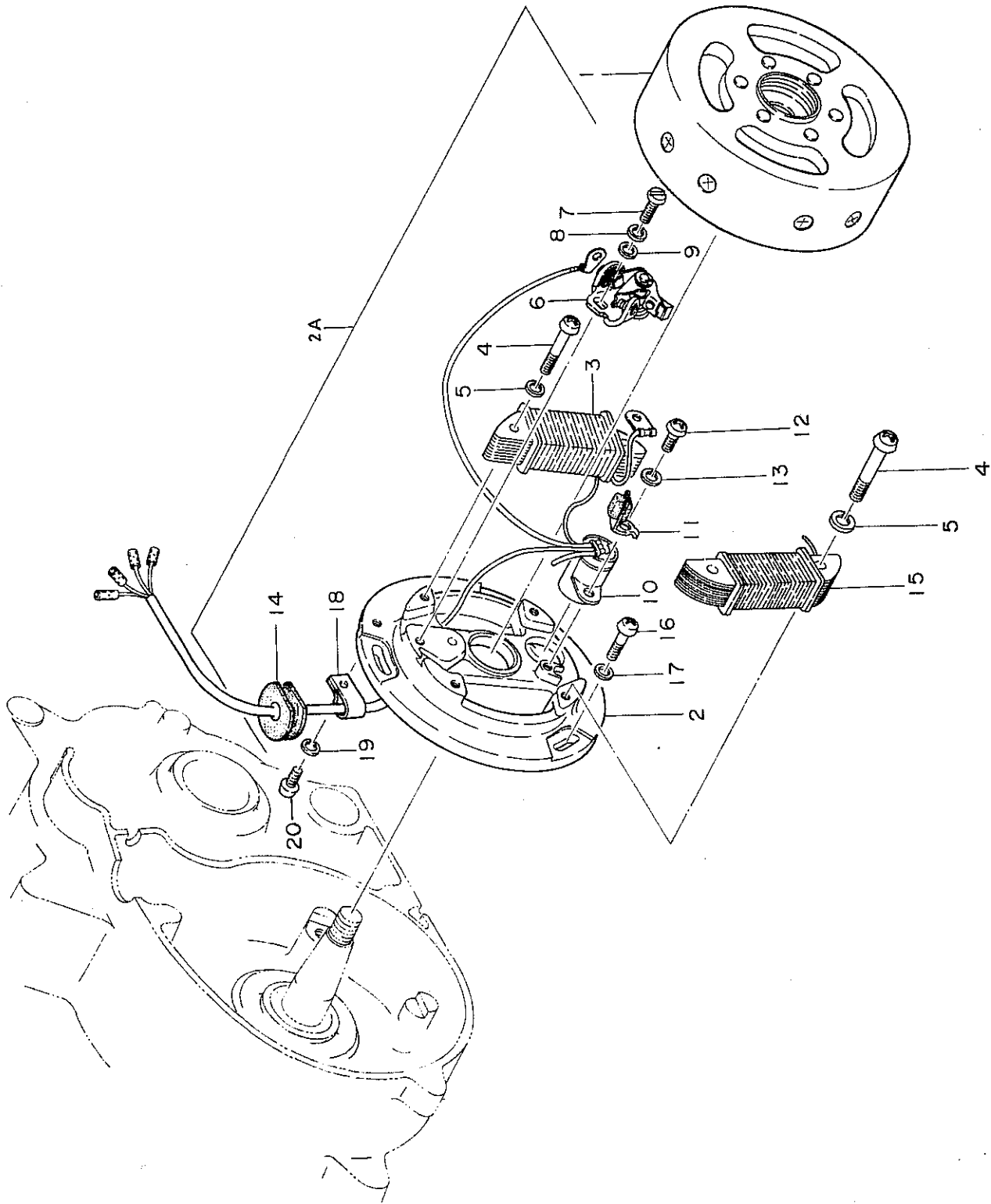


FIGURE 10 - MAGNETO

FIGURE 10 - MAGNETO

<u>REF.</u> <u>NO.</u>	<u>PART</u> <u>NUMBER</u>	<u>DESCRIPTION</u>	<u>QUANTITY</u> <u>REQUIRED</u>
1A	150 21200 900	Magneto Assembly	1
1	155 21200 800	Flywheel Magneto	1
2A	159 21200 900	Magneto Base Assembly	1
2		Base	1
3	170 21200 200	Primary Coil	1
4	0361 0424	4X25mm Screw	4
5	0431 0410	4mm Spring Washer	4
6	168 20900 800	Contact Breaker Ass'y	1
7	0311 0412	4X12mm Screw	1
8	0431 0410	4mm Spring Washer	1
9	0411 0410	4mm Washer	1
10	177 20900 900	Condenser	1
11	185 20900 900	Oil Slipper	1
12	0361 0410	4X10mm Screw	1
13	0431 0410	4mm Spring Washer	1
14	250 21200 200	Wire Harness Grommet	1
15	171 21200 200	Lighting Coil	1
18	252 21200 200	Clamp	1
19	0431 0410	4mm Spring Washer	1
20	990 11040 061	4X6mm Screw	1
16	0311 0514	5X14mm Screw	3
17	0411 0512	5mm Washer	3

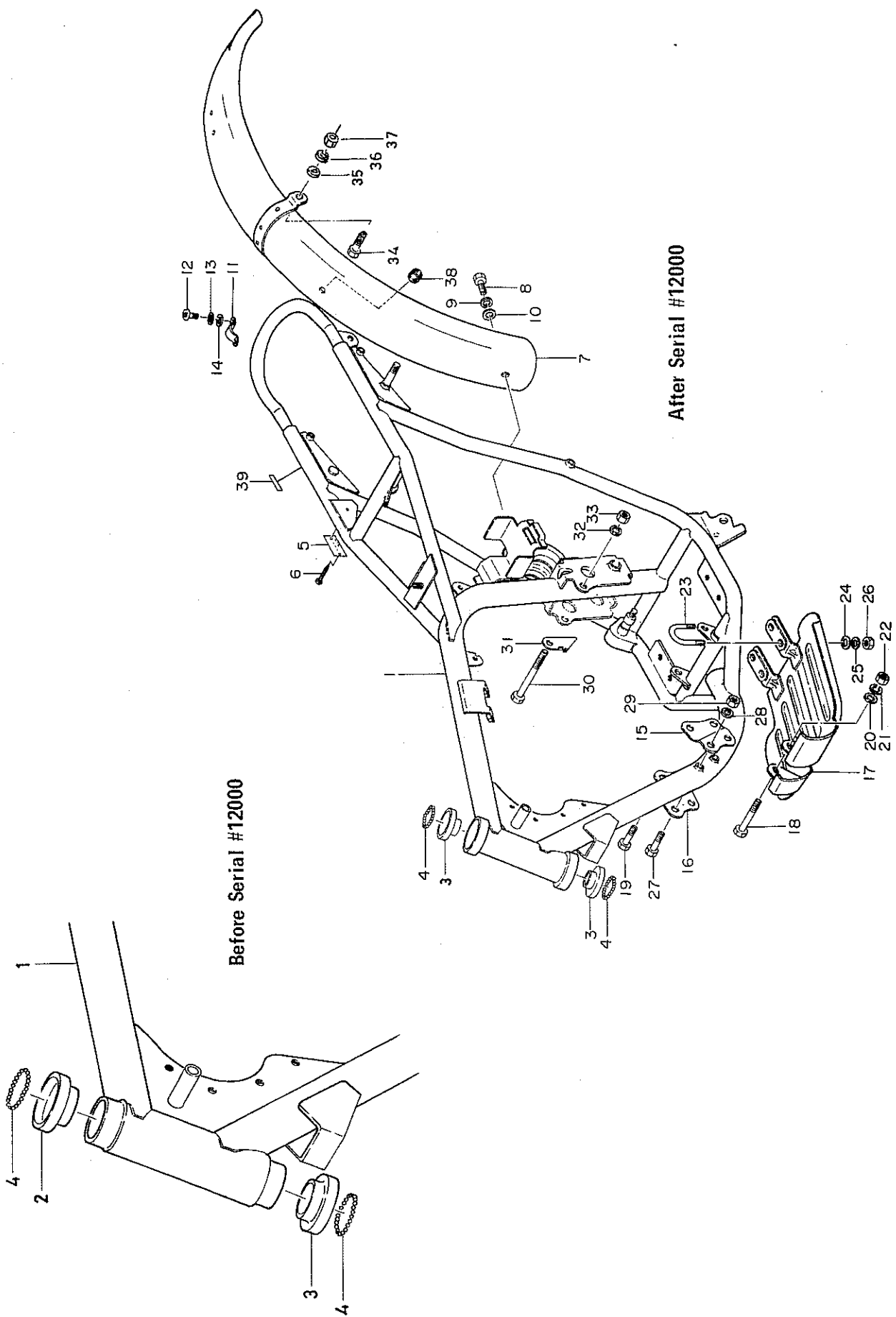


FIGURE 11 -- FRAME

FIGURE 11 - FRAME

<u>REF. NO.</u>	<u>PART NUMBER</u>	<u>DESCRIPTION</u>	<u>QUANTITY REQUIRED</u>
1	050 34501 800	Frame - Before Serial #12000	1
1	050 34501 801	Frame - After Serial #12000	1
2	091 34501 200	Race Outer (Upper) Delete After Serial #12000	1
3	094 34501 200	Race Outer (Lower) Before Serial #12000	1
3	094 34501 201	Race Outer - After Serial #12000	2
4	0611 0316	3/16 Steel Ball	46
5	009 34501 200	Frame Number Plate	1
6	993 30210 200	2.14 X 4 Drive Screw	2
7	087 34501 800	Rear Fender Complete	1
8	0111 0818	8 X 18mm Bolt	1
9	0431 0820	8mm Spring Washer	1
10	0411 0818	8mm Washer	1
11	215 34501 200	Rear Fender Clamp	1
12	0311 0614	6 X 14mm Screw	2
13	0431 0615	6mm Spring Washer	2
14	0411 0613	6mm Washer	2
15	098 34501 200	Engine Bracket LH	1
16	149 34501 200	Engine Bracket RH	1
17	770 34501 800	Engine Protector	1
18	0113 0862	8 X 65mm Bolt	1
19	0111 0842	8 X 40 - 20mm Bolt	2
20	0411 0818	8mm Washer	2
21	0431 0820	8mm Spring Washer	2
22	0231 0800	8mm Nut	2
23	774 34501 200	U-Bolt	2
24	0411 0613	6mm Washer	4
25	0431 0615	6mm Spring Washer	4
26	0231 0600	6mm Nut	4
27	0113 0862	8 X 60mm Bolt	1
28	0431 0820	8mm Spring Washer	2
29	0231 0800	8mm Nut	2
30	990 21081 106	8 X 110 - 20mm Bolt	2
31	819 34501 200	Foot Brake Switch Bracket	1
32	0431 0820	8mm Spring Washer	2
33	0231 0800	8mm Nut	2
34	0122 0845	8 X 45mm Bolt	2
35	0411 0818	8mm Washer	2
36	0431 0820	8mm Spring Washer	2
37	0231 0800	8mm Nut	2
38	789 34402 200	Grommet	1
39	925 12601 200	Made In Japan Mark	1



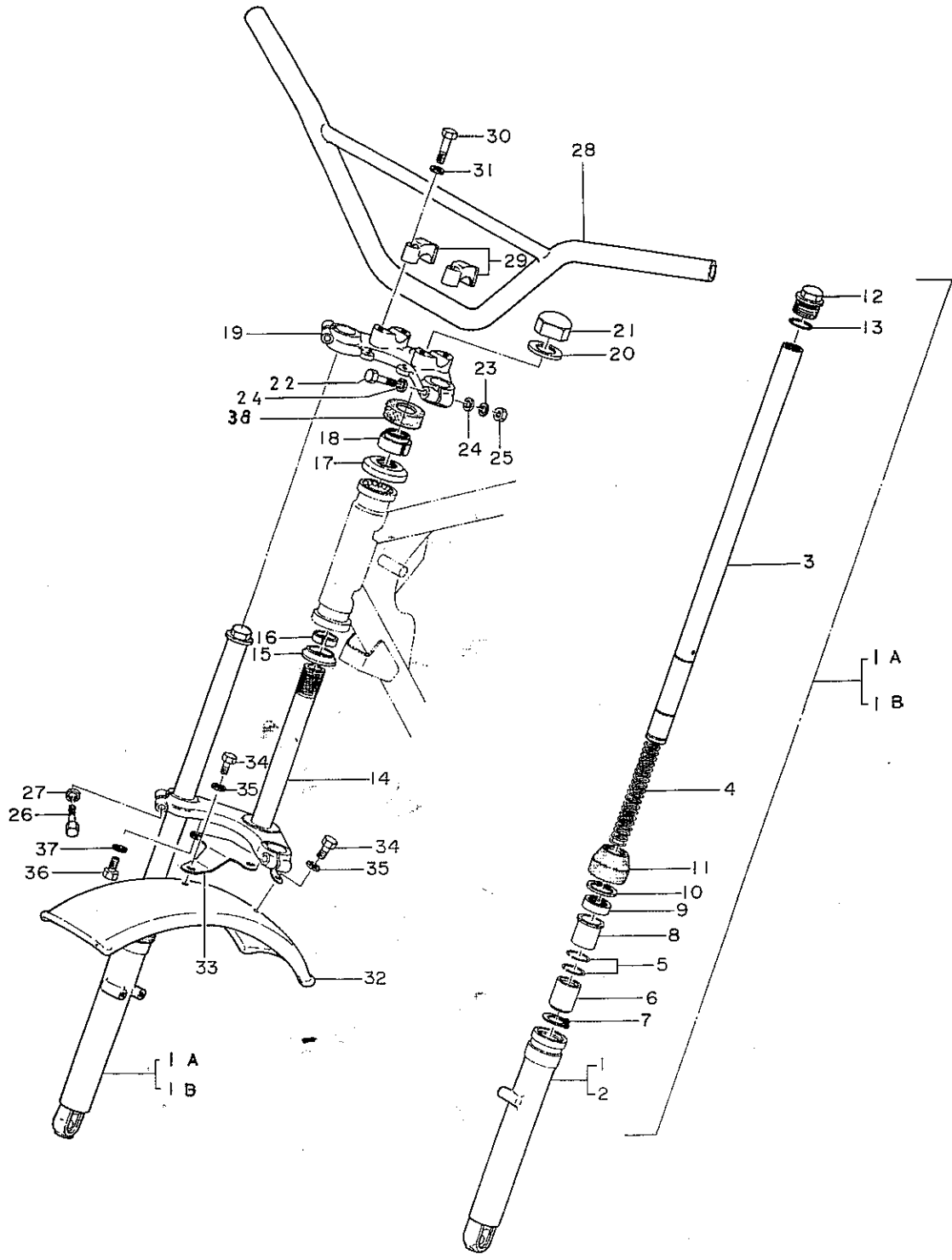


FIGURE 12 — FRONT FORK AND HANDLE BAR

FIGURE 12 - FRONT FORK AND HANDLE BAR

<u>REF. NO.</u>	<u>PART NUMBER</u>	<u>DESCRIPTION</u>	<u>QUANTITY REQUIRED</u>
1A	184 34501 900	Front Fork Pipe Ass'y LH	1
2B	185 34501 900	Front Fork Pipe Ass'y RH	1
1	183 34501 200	Front Fork Bottom Case LH	1
2	171 34501 200	Front Fork Bottom Case RH	1
3	164 34501 200	Front Fork Pipe	1
4	190 34501 200	Cushion Spring	1
5	178 34501 200	Stopper Ring	2
6	174 34501 200	Front Fork Piston	1
7	192 34501 200	Front Fork Snap Ring	1
8	173 34501 200	Fork Pipe Guide	1
9	186 34501 200	Front Fork Oil Seal	1
10	193 34501 200	Circlip 3l	1
11	187 34501 200	Dust Seal 3l	1
12	780 34501 200	Front Fork Bolt	1
13	999 67023 000	O-Ring	1
14	165 34501 800	Fork Bridge (Lower) Complete	1
15	095 34301 200	Race Inner (Lower)	1
16	188 34301 200	Steering Shim-Before Ser. #12000	1
16	188 34501 200	Steering Shim-After Serial #12000	1
17	092 34401 200	Inner Race (Upper) Before Serial #12000	1
17	092 34501 200	Inner Race (Upper) After Serial #12000	1
18	096 34401 200	Race Lock Nut	1
19	162 34501 200	Fork Upper Bridge	1
20	182 34501 200	Fork Support Washer A	1
21	148 34501 200	Steering Lock Nut	1
22	09511 106	8X60 - 20mm Bolt	2
23	0431 0820	8mm Spring Washer	2
24	0411 0818	8mm Washer	4
25	0211 0800	8mm Nut	2
26	0123 1040	10X40mm Bolt	2
27	0431 1025	10mm Spring Washer	2
28	100 34501 800	Handle	1
29	155 34501 200	Handle Holder Upper	2
30	0121 0838	8X35 - 20mm Bolt	4
31	0411 0818	8mm Washer	4
32	195 34501 800	Front Fender Complete	1
33	198 34501 200	Front Fender Bracket	1
34	0113 0612	6X12mm Bolt	3
35	0431 0615	6mm Spring Washer	3
36	0113 0612	6X12mm Bolt	3
37	0431 0615	6mm Spring Washer	3
38	097 34501 200	Race Cover Added After Serial #12000	1

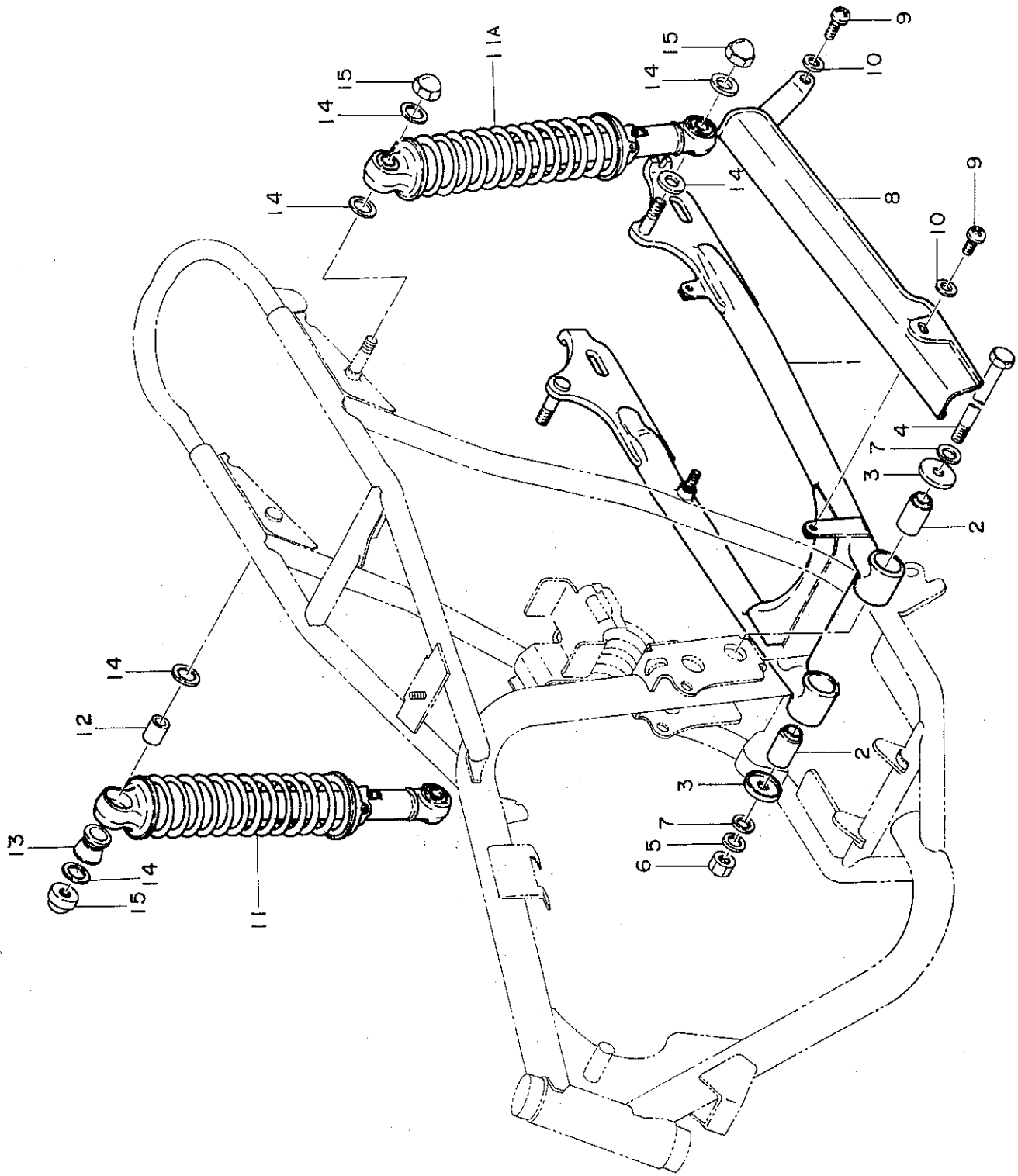


FIGURE 13 - REAR FRAME AND REAR CUSHION

FIGURE 13 - REAR FRAME AND REAR CUSHION

<u>REF.</u> <u>NO.</u>	<u>PART</u> <u>NUMBER</u>	<u>DESCRIPTION</u>	<u>QUANTITY</u> <u>REQUIRED</u>
1	265 34501 800	Rear Fork Complete	1
2	274 34301 200	Rear Fork Swing Metal	2
3	252 34401 200	Fork Swing Metal Cover	2
4	251 34501 200	Rear Fork Swing Shaft	1
5	0431 1025	10mm Spring Washer	1
6	0212 1000	10mm Nut	1
7	0411 1022	10mm Washer	2
8	260 34501 800	Chain Case Complete	1
9	0311 0612	6 X 12mm Screw	2
10	0411 0613	6mm Washer	2
11A	200 34501 900	Rear Cushion Assembly	2
11	200 34501 800	Rear Cushion Complete	2
12	203 34501 200	Rear Cushion Support Pipe	4
13	202 34501 200	Rear Cushion Support Rubber	4
14	0411 1022	10mm Washer	8
15	09525 105	10mm Cap Nut	4

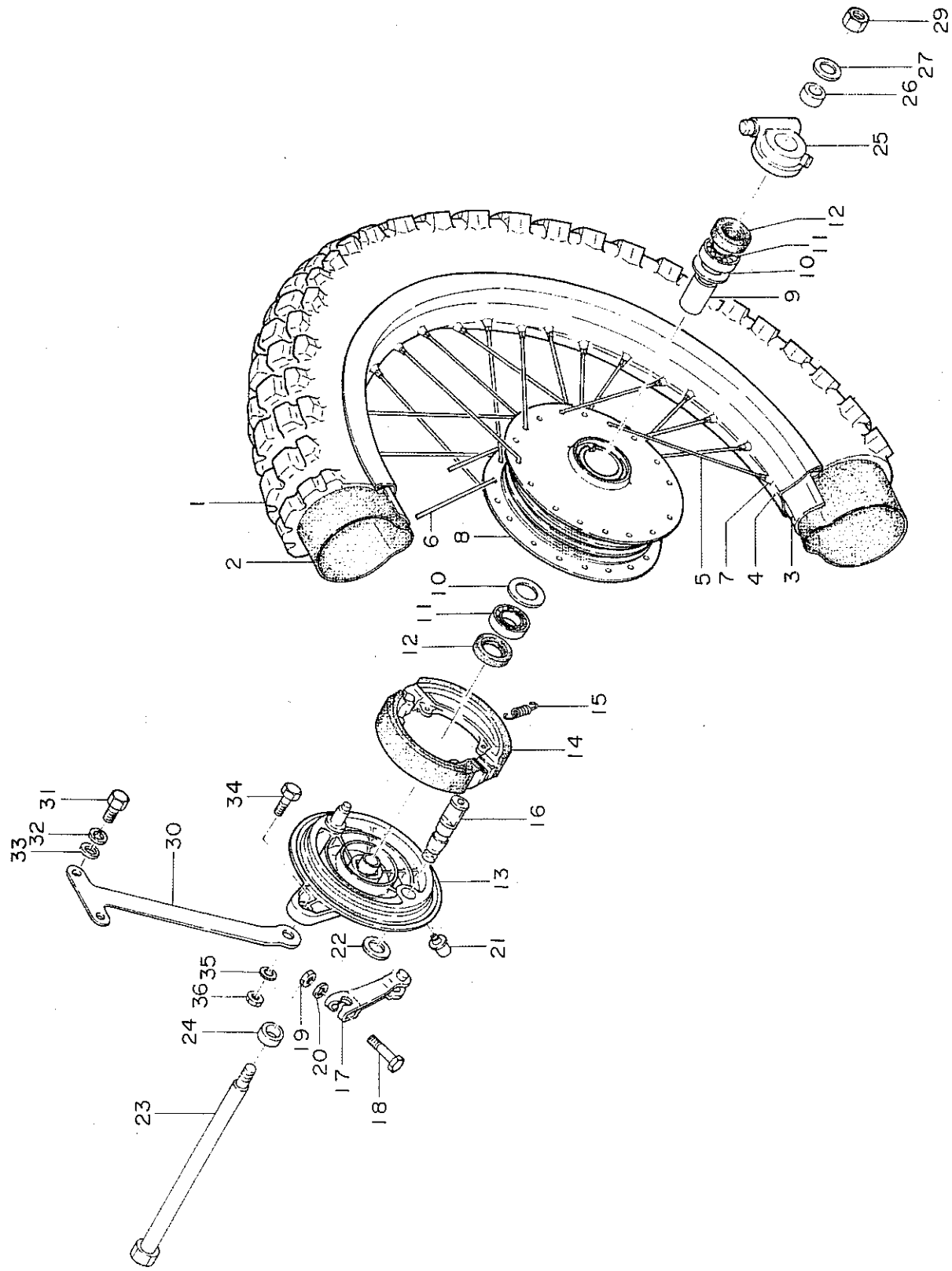


FIGURE 14 -- FRONT WHEEL

FIGURE 14 - FRONT WHEEL

<u>REF.</u> <u>NO.</u>	<u>PART</u> <u>NUMBER</u>	<u>DESCRIPTION</u>	<u>QUANTITY</u> <u>REQUIRED</u>
1A	330 34501 900	Front Wheel Assembly	1
1		300X19 F.L. Tire	1
2		300X19 Tube	1
3	329 34501 200	19" Flap	1
4	338 34501 200	19 Rim - Front	1
5A	336 34501 900	#10 Spoke Assembly	1 Set
5	352 34501 200	Outer Spoke	18
6	351 34501 200	Inner Spoke	18
7	353 34501 200	Nipple	36
8	282 34401 200	Front Hub Body	1
9	285 34401 200	Spacer	1
10	287 34401 200	Bearing Seat	2
11	07 6201 03	6201 Ball Bearing	2
12	999 66173 250	Oil Seal 17325	2
13	301 34401 200	Front Panel	1
14	306 34401 800	Brake Shoe	2
15	309 34401 200	Spring	2
16	307 34401 800	Cam Shaft	1
17	371 34401 800	Brake Arm	1
18	0111 0630	6 X 28mm Bolt	1
19	0222 0600	6mm Nut	1
20	0431 0615	6mm Spring Washer	1
21	379 34401 200	Grease Nipple	1
22	380 34401 200	Rubber Packing	1
23	290 34501 200	Front Hub Shaft	1
24	293 34501 200	Front Axle Collar RH 8.5	1
25	664 34501 900	Speedometer Gear Unit	1
26	293 34401 200	Front Axle Collar LH 7.5	1
27	0411 1022	10mm Washer	2
29	991 81100 001	10mm Nut	1
30	310 34501 200	Front Brake Torque Lock	1
31	0111 0616	6 X 16mm Bolt	2
32	0431 0615	6mm Spring Washer	2
33	0411 0613	6mm Washer	2
34	0112 0822	8 X 20mm Bolt	1
35	0431 0820	8mm Spring Washer	1
36	0211 0800	8mm Nut	1

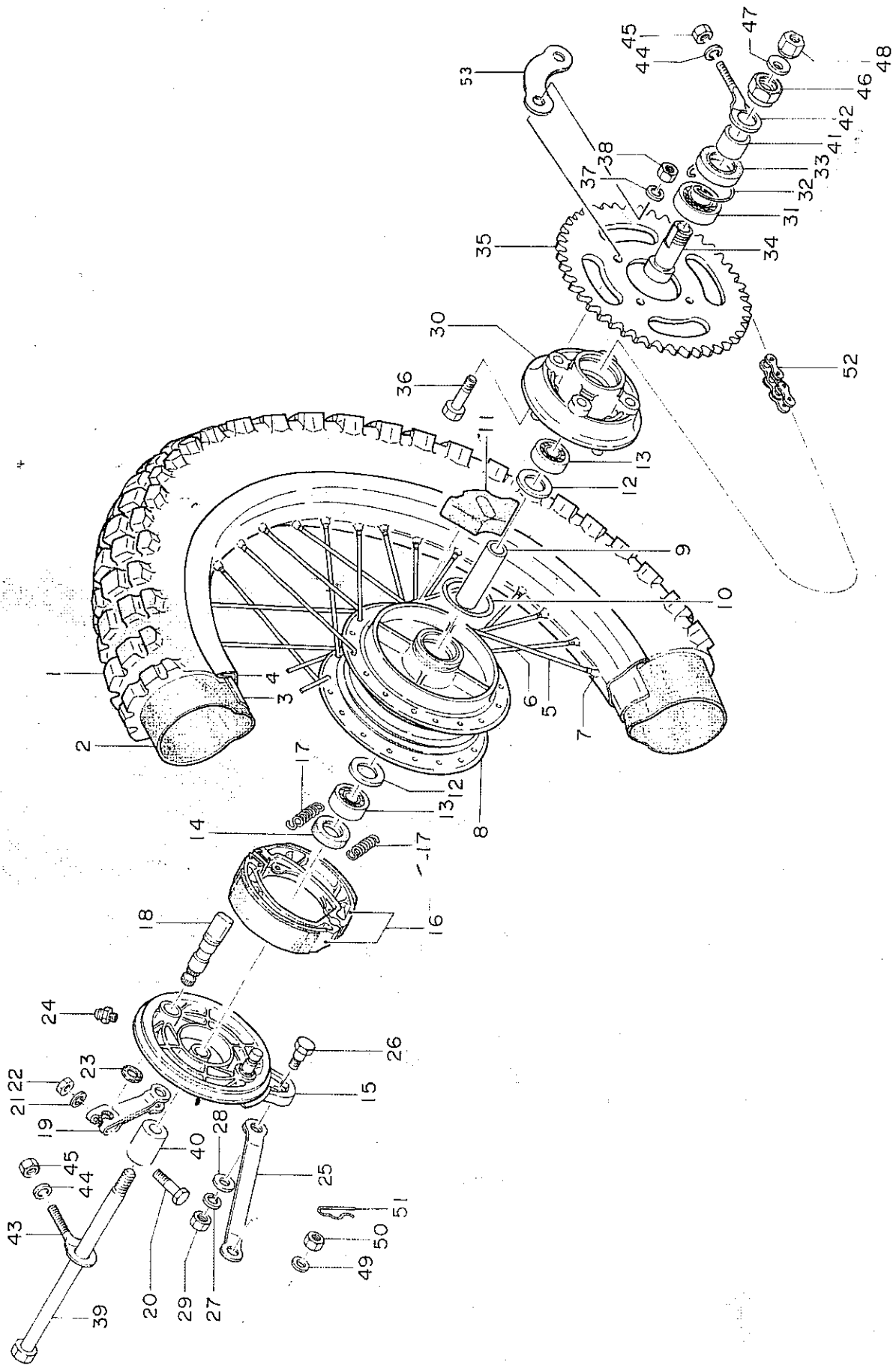


FIGURE 15 - REAR WHEEL

FIGURE 15 - REAR WHEEL

<u>REF. NO.</u>	<u>PART NUMBER</u>	<u>DESCRIPTION</u>	<u>QUANTITY REQUIRED</u>
1A	331 34501 900	Rear Wheel Assembly	1
1		3.25 X 18 M2 Tire	1
2		3.25 X 18 Tube	1
3	228 34501 800	18" Flap	1
4	339 34501 200	18 Rim - Rear	1
5A	337 34501 900	10 Spoke Ass'y Rear	1 Set
5	352 34501 200	Outer Spoke	18
6	351 34501 200	Inner Spoke	18
7	353 34501 200	Nipple	36
8	283 34501 200	Rear Hub Body	1
9	286 34501 200	Center Pipe	1
10	288 34501 200	Rear Dust Seal	1
11	324 34501 200	Damper Rubber	4
12	287 34501 200	Bearing Seat	2
13	07 6201 03	Ball Bearing 6201	2
14	09590 106	Oil Seal 17325	1
15	315 34501 200	Rear Panel	1
16	306 34501 200	Brake Shoe	2
17	309 34501 200	Return Spring	2
18	307 34501 200	Cam Shaft	1
19	371 34501 200	Brake Arm	1
20	0111 0630	6 X 28mm Bolt	1
21	0222 0600	6mm Spring Washer	1
22	0431 0615	6mm Nut	1
23	380 34401 200	Rubber Packing	1
24	379 34401 200	Grease Nipple	1
25	377 34501 200	Rear Brake Lock	1
26	0112 0822	8 X 20mm Bolt	1
27	0431 0820	8mm Spring Washer	1
28	0411 0818	8mm Washer	1
29	0211 0800	8mm Nut	1
30	323 34501 200	Drive Flange	1
31	07 6203 03	Ball Bearing #6203	1
32	327 34501 200	Flange Snap Ring	1
33	999 66234 050	Oil Seal #23405	1
34	325 34501 200	Flange Collar	1
35	343 34501 200	Sprocket 43 Tooth	1
35	7381 5060	Sprocket 38 Tooth	-
35	7381 5050	Sprocket 40 Tooth	-
35	7381 5040	Sprocket 42 Tooth	-
35	7381 5030	Sprocket 44 Tooth	-
35	7381 5020	Sprocket 46 Tooth	-
35	7381 5010	Sprocket 48 Tooth	-
36	990 31080 356	8 X 35mm Bolt	4
37	0431 0820	8mm Spring Washer	4
38	0211 0800	8mm Nut	4
39	291 34501 200	Rear Hub Shaft	1
40	295 34501 200	Rear Axle Collar RH 32	1
41	294 34501 200	Rear Axle Collar LH	1
42	298 34501 200	Chain Tension LH	1
43	297 34501 200	Chain Tension RH	1
44	0411 0613	6mm Washer	2
45	0222 0600	6mm Nut	2
46	326 34501 200	Flange Collar Nut	1
47	0411 1022	Rear Axle Washer	1
48	305 34501 200	Rear Axle Nut	1
49	0431 0820	8mm Spring Washer	1
50	0211 0800	8mm Nut	1
51	124 35100 200	Clip	1
52	346 34501 200	Chain	1
53	344 34501 200	Lock Washer for "Sprocket"	2



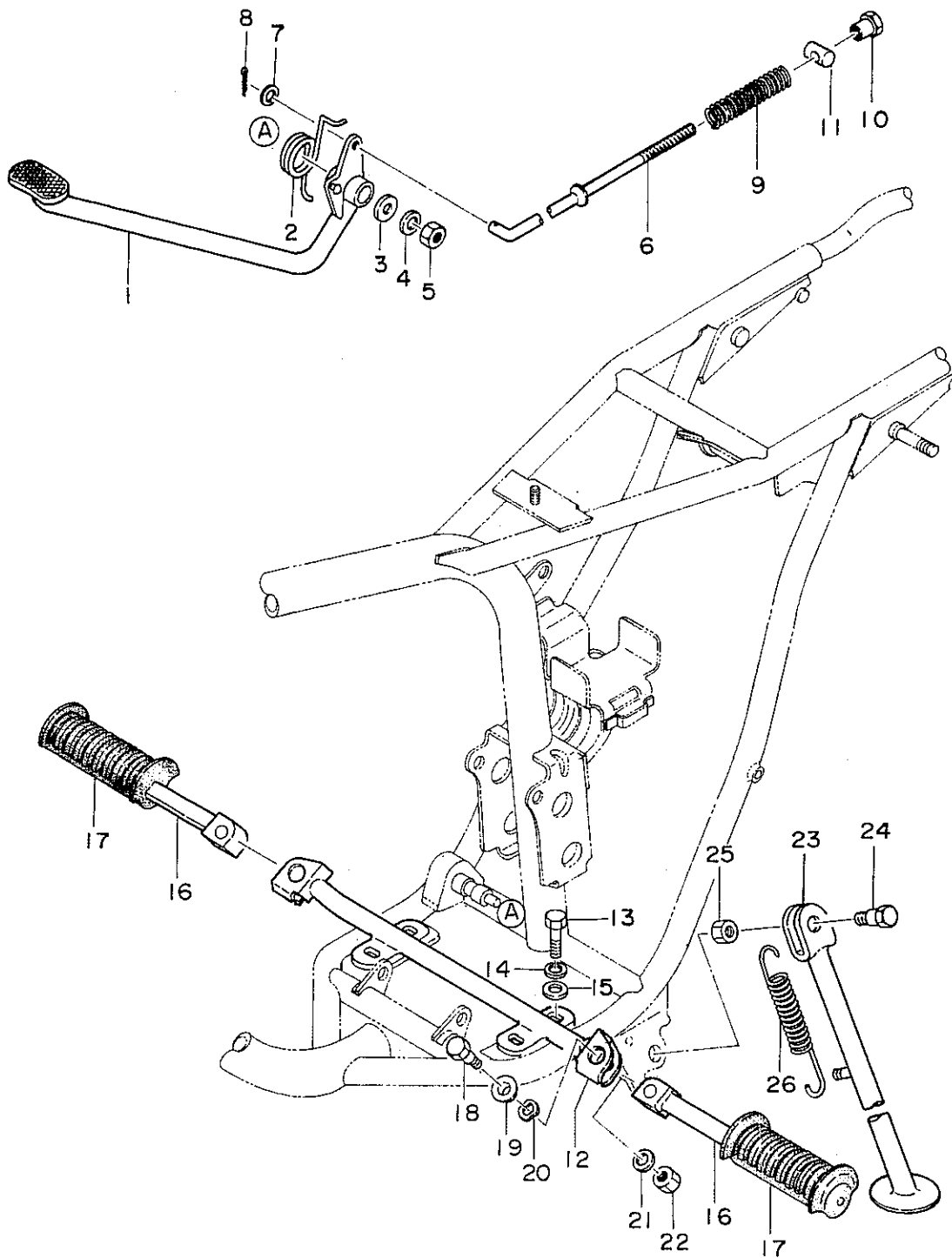


FIGURE 16 – FOOT REST AND BRAKE PEDAL

FIGURE 16 - FOOT REST AND BRAKE PEDAL

<u>REF.</u> <u>NO.</u>	<u>PART</u> <u>NUMBER</u>	<u>DESCRIPTION</u>	<u>QUANTITY</u> <u>REQUIRED</u>
1	361 34501 800	Rear Brake Pedal Complete	1
2	374 34501 200	Rear Brake Arm Spring	1
3	378 34501 200	Brake Pedal Washer	1
4	0431 0820	8mm Spring Washer	1
5	0211 0800	8mm Nut	1
6	368 34501 200	Rear Brake Rod	1
7	0411 0613	6mm Washer	1
8	0551 2018	2.3 X 15 Split Pin	1
9	375 34301 200	Brake Rod Spring	1
10	373 34301 200	Brake Rod Adjuster	1
11	372 34301 200	Brake Cam Arm Metal	1
12	068 34501 800	Foot Rest Shaft Complete	1
13	0111 0818	8 X 20mm Bolt	4
14	0431 0820	8mm Spring Washer	4
15	0411 0818	8mm Washer	4
16	755 34501 200	Foot Rest Arm	2
17	752 34501 200	Foot Rest Rubber	2
18	756 34501 200	Foot Rest Joint Bolt	2
19	757 34501 200	Foot Rest Joint Spacer	2
20	992 04100 030	Wave Washer	2
21	0411 0818	8mm Washer	2
22	0211 0800	8mm Nut	2
23	760 34501 800	Stand Complete	1
24	764 34501 200	Stand Bolt	1
25	0212 1000	10mm Nut	1
26	763 34501 200	Stand Spring	1

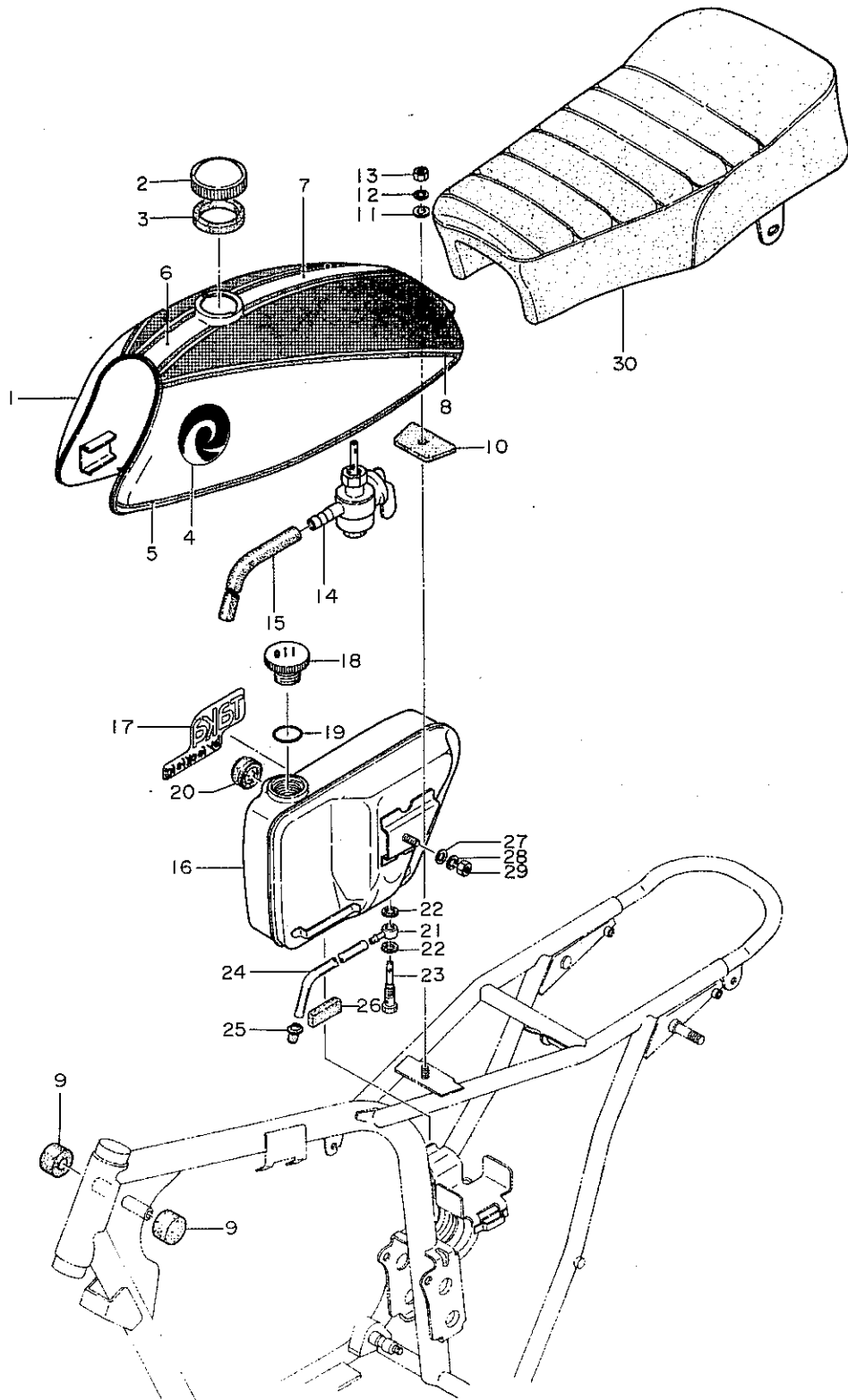


FIGURE 17 – FUEL TANK AND SEAT

FIGURE 17 - FUEL TANK AND SEAT

<u>REF.</u> <u>NO.</u>	<u>PART</u> <u>NUMBER</u>	<u>DESCRIPTION</u>	<u>QUANTITY</u> <u>REQUIRED</u>
1	591 34501 800	Fuel Tank Complete	1
2	595 34501 902	Tank Cap Assembly	1
3	682 34401 200	Cap Packing	1
4	435 34501 200	Symbol Mark	2
5	437 34501 200	Stripe Tape A	2
6	438 34501 200	Stripe Tape B	1
7	441 34501 200	Stripe Tape C	1
8	442 34501 200	Stripe Tape D	2
9	060 34501 200	Tank Support Rubber (Front)	2
10	644 34501 200	Tank Support Rubber (Rear)	1
11	0411 0818	8mm Washer	1
12	0431 0820	8mm Spring Washer	1
13	0211 0800	8mm Nut	1
14	592 11501 900	Cock Assembly	1
15	700 34501 200	Fuel Pipe	1
16	960 34501 800	Oil Tank Complete	1
17	906 12601 200	Name Plate	1
18	5560 5010	Oil Tank Cap Assembly	1
19	09566 108	O-Ring #26	1
20	5531 5010	Oil Level Gauge	1
21	961 34501 200	Oil Tank Joint	1
22	963 34501 200	Oil Tank Joint Packing	2
23	5532 5010	Oil Filter Complete	1
24	701 34501 200	Oil Pipe	1
25	941 34501 200	Cil Pipe Grommet	1
26	965 34501 200	Oil Tank Support Rubber	1
27	0411 0818	8mm Washer	1
28	0431 0820	8mm Spring Washer	1
29	0211 0800	8mm Nut	1
30	391 34501 800	Seat Complete	1

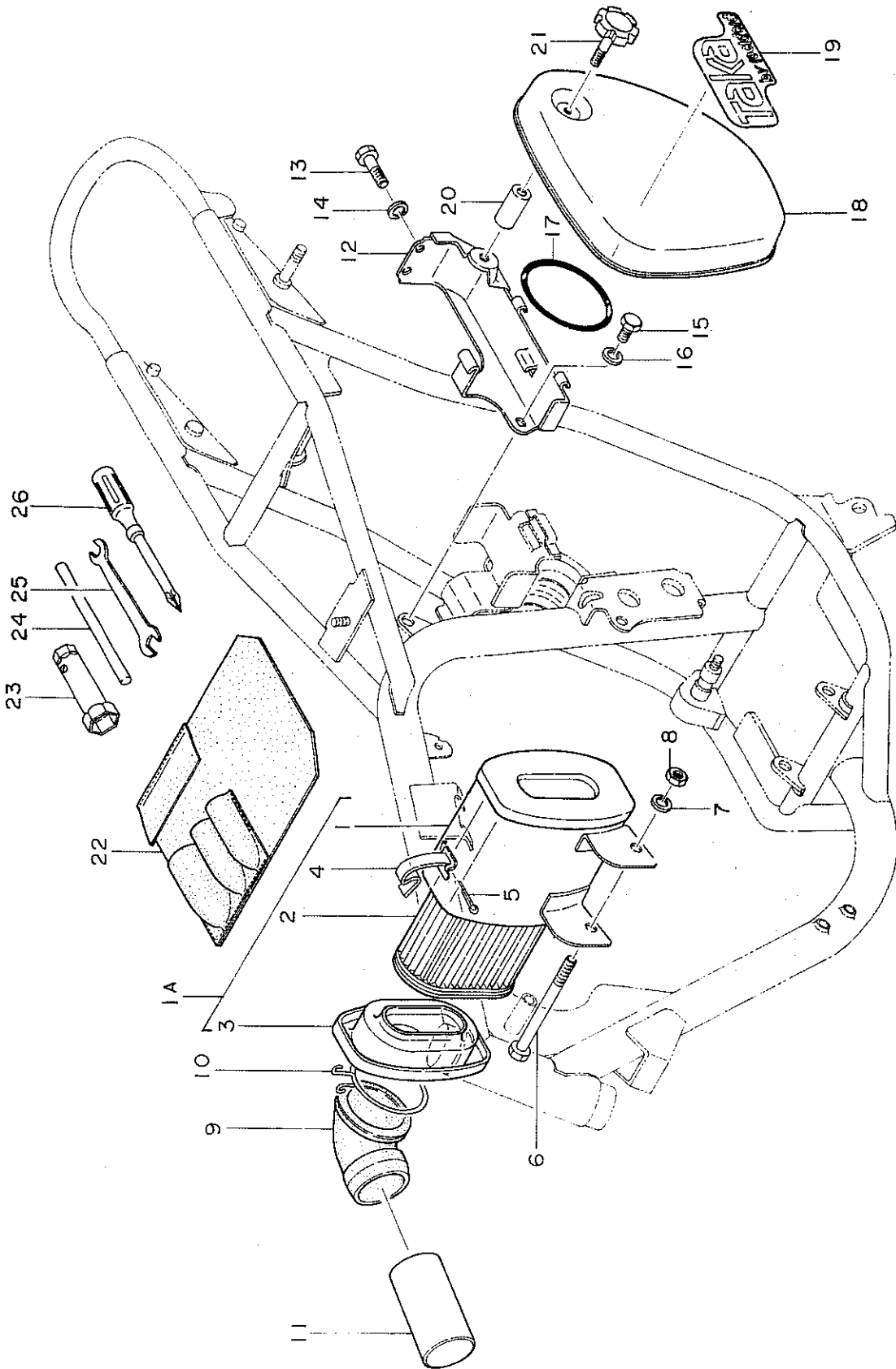


FIGURE 18 — AIR CLEANER - SIDE COVER - TOOLS

FIGURE 18 - AIR CLEANER - SIDE COVER - TOOLS

<u>REF. NO.</u>	<u>PART NUMBER</u>	<u>DESCRIPTION</u>	<u>QUANTITY REQUIRED</u>
1A	410 12601 900	Air Cleaner Assembly	1
1	419 12601 800	Cleaner Body Complete	1
2	420 12601 800	Cleaner Element Complete	1
3	416 12601 800	Cleaner Cover Complete	1
4	430 34501 200	Cleaner Clip	2
5	0551 2525	2.5X25 Split Pin	2
6	990 21081 006	8X100 - 20 mm Bolt	1
7	0431 0820	8mm Spring Washer	1
8	0211 0800	8mm Nut	1
9	446 34501 200	Joint Rubber	1
10	439 34501 200	Cleaner Clamp A	1
11	455 34501 200	Cleaner Pipe Joint	1
12	403 34501 800	Tool Bracket Complete	1
13	0113 0612	6X12 Bolt	2
14	0431 0615	6 Spring Washer	2
15	0111 0818	8X 16 Bolt	1
16	0431 0820	8 Spring Washer	1
17	400 34501 200	Tool Band	1
18	405 34501 800	Tool Box Cover Complete	1
19	906 12601 200	Name Plate	1
20	454 34401 200	Cleaner Knob Spacer	1
21	453 34501 800	Tool Box Cover Knob	1
22	943 20000 200	Tool Bag	1
23	823 20000 200	17X21 Box Spanner	1
24	951 20000 200	8X120 Handle	1
25	808 20000 200	10X13 Spanner	1
26	860 20000 200	Plus Driver	1

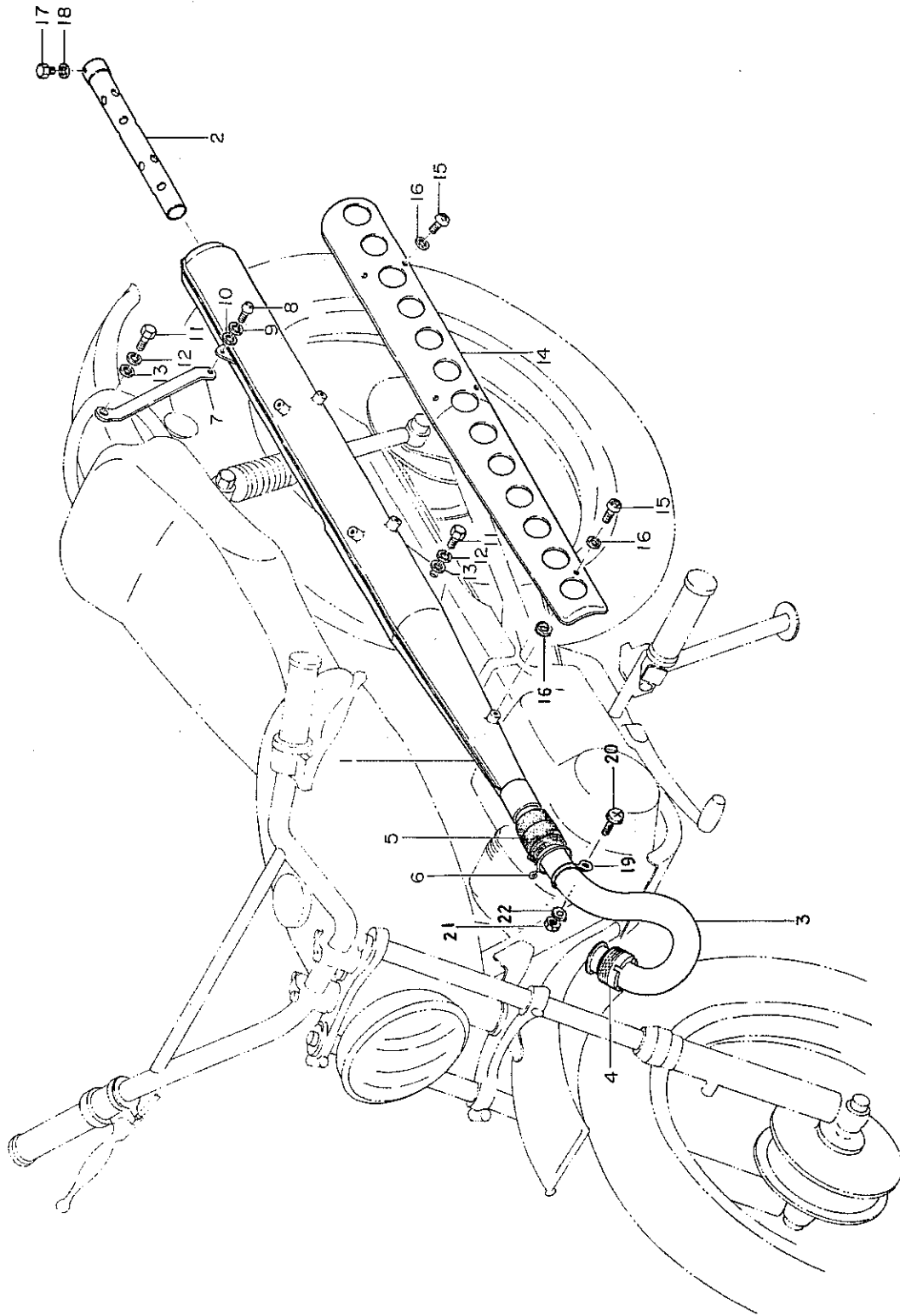


FIGURE 19 - EXHAUST SYSTEM

FIGURE 19 - EXHAUST SYSTEM

<u>REF.</u> <u>NO.</u>	<u>PART</u> <u>NUMBER</u>	<u>DESCRIPTION</u>	<u>QUANTITY</u> <u>REQUIRED</u>
1	706 34501 800	Muffler Complete	1
2	709 34501 800	Diffuser Pipe Complete	1
3	713 34501 200	Exhaust Pipe	1
4	726 34501 200	Muffler Clamp Nut	1
5	711 34501 200	Muffler Joint Rubber	1
6	712 34501 200	Muffler Joint Clamp A	1
7	714 34501 200	Muffler Stay	1
8	0113 0612	6 X 12mm Screw	1
9	0431 0615	6mm Spring Washer	1
10	0411 0613	8mm Washer	1
11	0111 0818	8 X 18mm Bolt	2
12	0431 0820	8mm Spring Washer	2
13	0411 0818	8mm Washer	2
14	738 34501 200	Muffler Protector	1
15	0311 0610	6 X 10mm Screw	5
16	142 34401 200	6mm Gasket	10
17	0121 0510	5 X 10mm Bolt	1
18	0411 0512	5mm Washer	1
<u>Added After Serial No. 12500</u>			
19	6363 5000	Rubber Stopper Joint	1
20	0311 0414	4 X 14mm Screw	1
21	0211 0400	4mm Nut	1
22	0411 0410	4mm Spring Washer	1



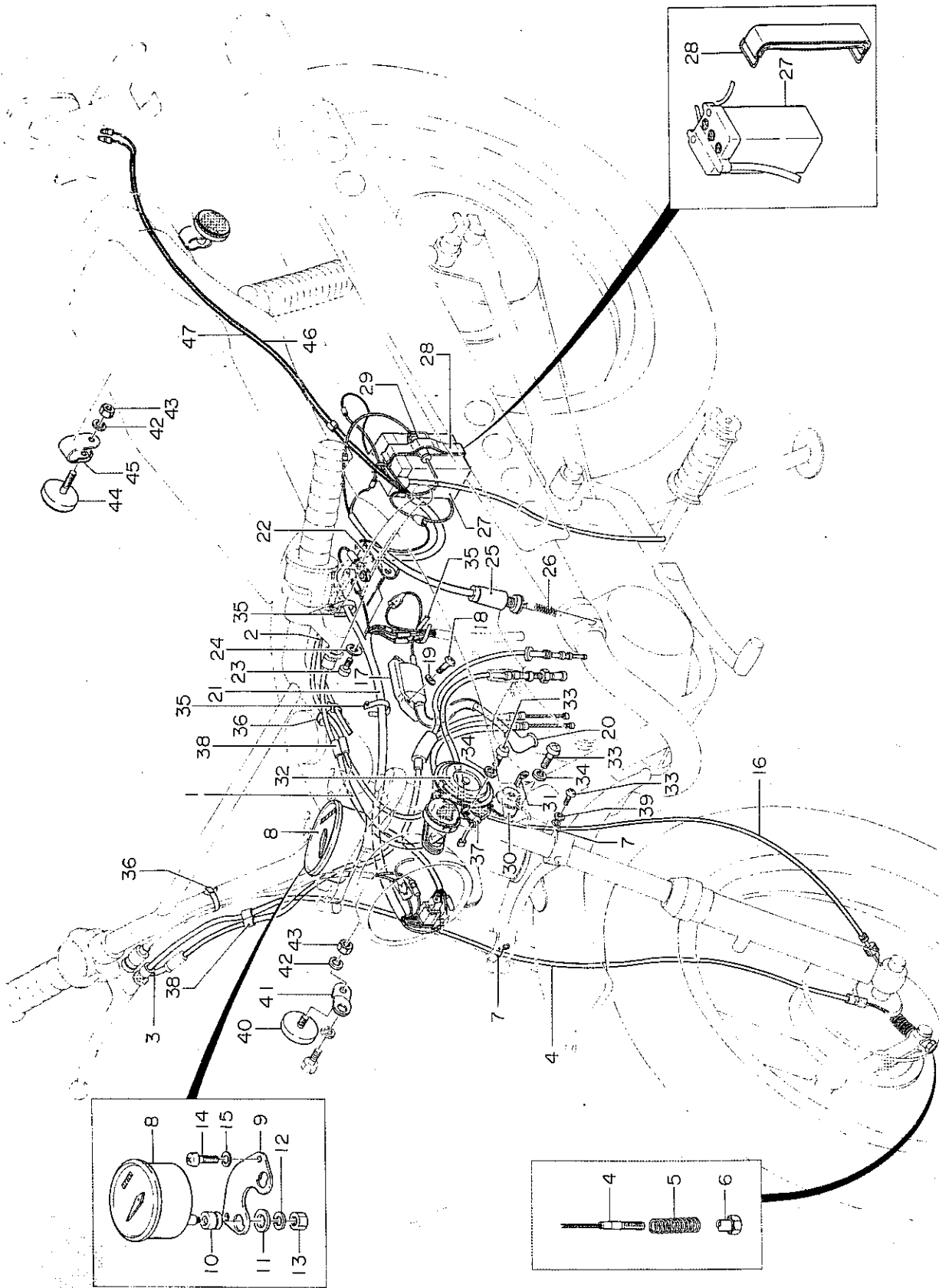


FIGURE 20 - CONTROL SYSTEM

FIGURE 20 - CONTROL SYSTEM

<u>REF. NO.</u>	<u>PART NUMBER</u>	<u>DESCRIPTION</u>	<u>QUANTITY REQUIRED</u>
1	886 34501 800	Clutch Wire	1
2	888 34501 800	Choke Wire	1
3	885 34501 800	Throttle Wire	1
4	350 34501 800	Front Brake Wire Complete	1
5	375 34301 200	Brake Rod Spring	1
6	373 34301 200	Brake Rod Adjuster	1
7	776 34501 200	Wire Holder	2
8	660 34501 900	Speedometer Assembly	1
9	661 34501 200	Speedometer Bracket	1
10	662 34501 200	Speedometer Damper Rubber	2
11	992 08050 006	5mm Special Washer	2
12	0431 0513	5mm Spring Washer	2
13	0211 0500	5mm Nut	2
14	0311 0616	6 X 16mm Screw	2
15	0431 0615	6mm Spring Washer	2
16	663 34501 800	Speedometer Cable Complete	1
17	167 21200 900	Ignition Coil	1
18	0311 0625	6 X 22mm Screw	2
19	0431 0615	6mm Spring Washer	2
20	215 12110 200	Plug Cap Assembly	1
21	792 34501 800	Wire Harness Complete	1
22	809 34501 800	Rectifier	1
23	0311 0612	6 X 10mm Screw	1
24	0431 0615	6mm Spring Washer	1
25	820 34501 900	Foot Brake Switch Assembly	1
26	818 34501 200	Foot Brake Switch Spring	1
27	8701 5010	Battery Complete	1
28	811 34501 800	Battery Band	1
29	840 34501 900	Fuse Holder Complete	1
30	830 34501 900	Main Switch Assembly	1
31	831 34501 900	Key	1
32	8402 5600	Horn Complete	1
33	0311 0612	6 X 12mm Screw	6
34	0431 0615	6mm Spring Washer	4
35	777 34501 200	Wire Band	4
36	903 34010 200	Wire Band	4
37	198 11109 200	Cord Clamp	2
38	778 34501 200	Wire Clamp	3
39	0411 0613	6mm Washer	2
40	801 34501 200	Reflector - Amber	2
41	803 34501 200	Reflector Bracket B	2
42	0431 0513	5mm Spring Washer	4
43	0211 0500	5mm Nut	4
44	800 34501 200	Reflector - Red	2
45	563 34010 200	Reflector Bracket B	2
46	134 34501 200	Stop Lamp Cord Complete	1
47	135 34501 200	Tail Lamp Cord Complete	1

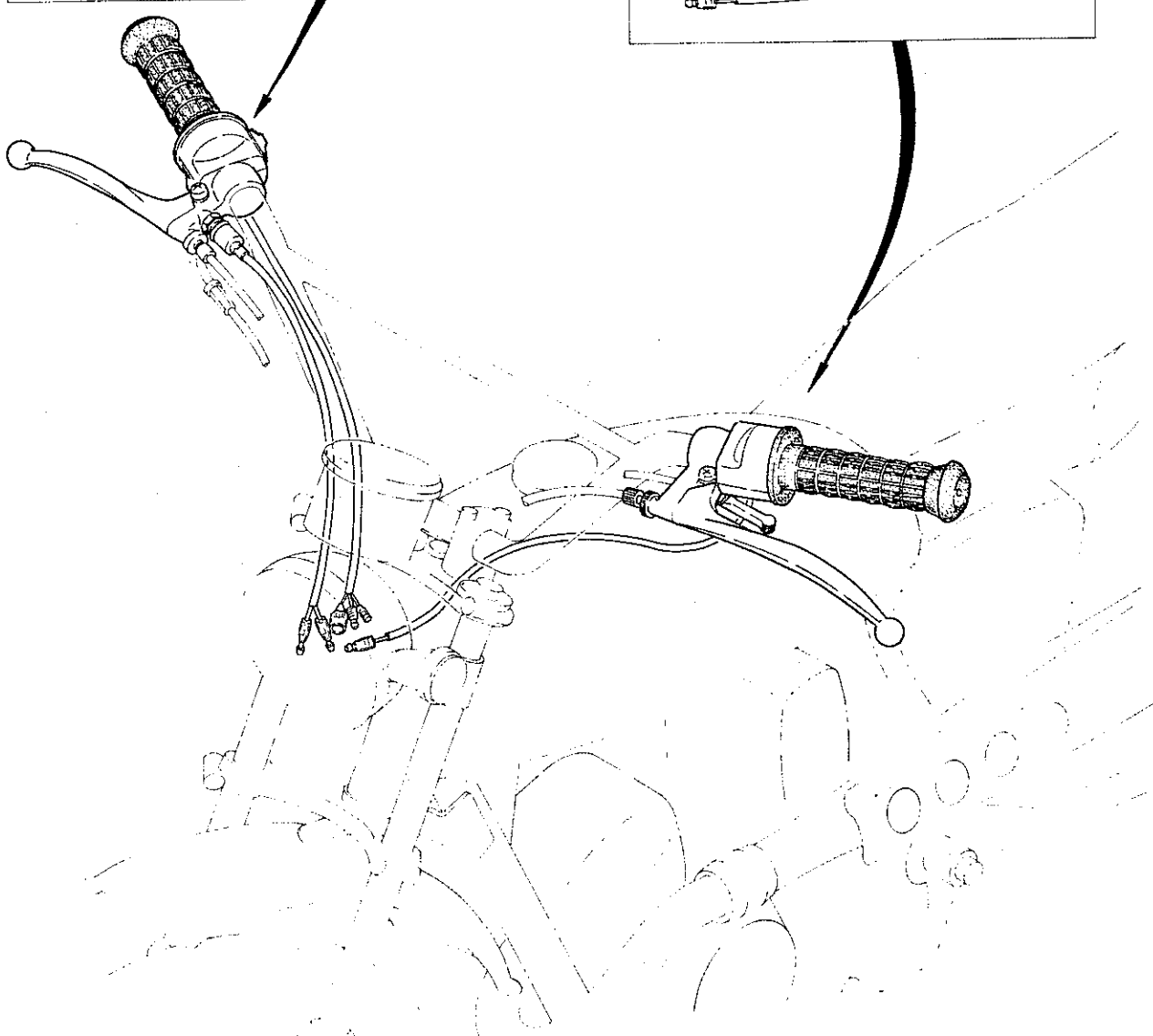
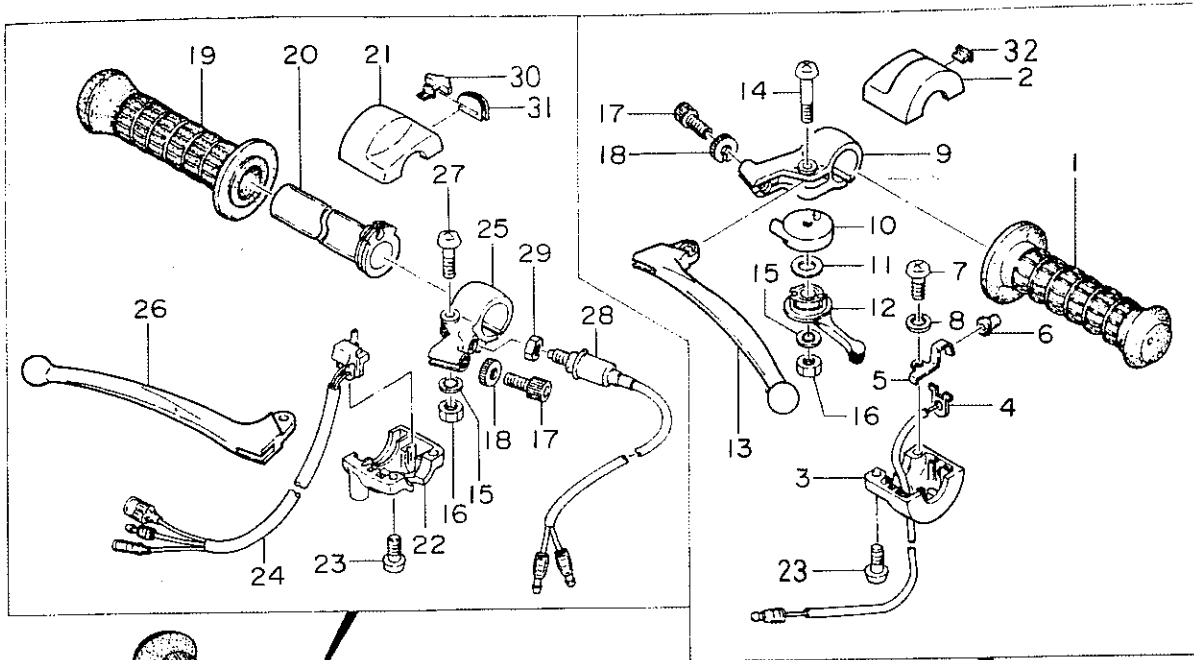


FIGURE 21 – HANDLE BAR GRIPS

FIGURE 21 - HANDLE BAR GRIPS

<u>REF.</u> <u>NO.</u>	<u>PART</u> <u>NUMBER</u>	<u>DESCRIPTION</u>	<u>QUANTITY</u> <u>REQUIRED</u>
1	105 34501 200	Grip Rubber (LH)	1
2	110 34501 200	Switch Box Upper (LH)	1
3	111 34501 200	Switch Box Lower (LH)	1
4	130 34501 800	Horn Cord Complete	1
5	123 34301 201	Switch Spring	1
6	124 34301 201	Switch Push Button	1
7	990 11030 060	3 X 6mm Screw	1
8	0431 0307	3mm Spring Washer	1
9	131 34501 200	Clutch Lever Holder	1
10	127 34501 200	Choke Lever Body	1
11	121 34501 200	Choke Lever Washer	1
12	120 34501 200	Choke Lever	1
13	114 34501 200	Clutch Lever	1
14	990 21060 451	6 X 45 - 30 Bolt	1
15	0451 0611	6mm Tooth Washer	2
16	0211 0600	6mm Nut	2
17	126 34501 200	Lever Adjust Bolt	2
18	128 34501 200	Lever Adjust Nut	2
19	118 34501 200	Grip Rubber (RH)	1
20	116 34501 200	Grip Pipe Inner	1
21	112 34501 200	Switch Box Upper (RH)	1
22	113 34501 200	Switch Box Lower (RH)	1
23	0311 0616	6 X 16mm Screw	4
24	846 34501 900	Dimmer Switch Ass'y - Before Serial #12634	1
24	846 34501 901	Dimmer Switch Ass'y - After Serial #12634	1
25	132 34501 200	Front Brake Lever Holder	1
26	115 34501 200	Front Brake Lever	1
27	990 21060 251	6 X 25 - 25mm Bolt	1
28	680 34402 900	Hand Stop Switch Ass'y	1
29	0231 8000	8mm Nut	1
	<u>Added After Serial #12634</u>		
30	854 34501 801	Dimmer Switch Lever Complete	1
31	859 34501 200	Lever Guide	1
32	137 34501 200	Switch Box Plug	1

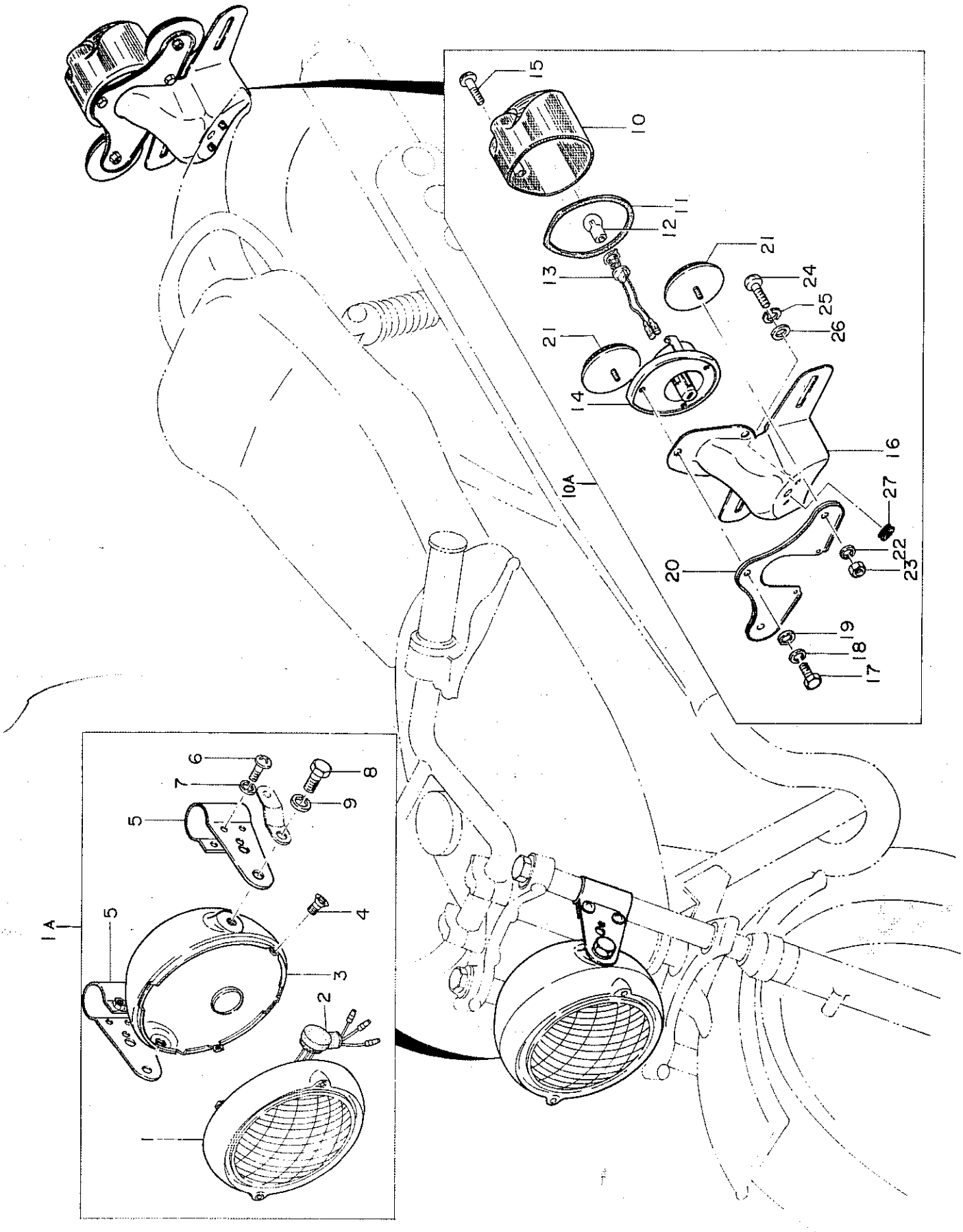


FIGURE 22 - HEAD LAMP AND TAIL LAMP

FIGURE 22 - HEAD LAMP AND TAIL LAMP

<u>REF.</u> <u>NO.</u>	<u>PART</u> <u>NUMBER</u>	<u>DESCRIPTION</u>	<u>QUANTITY</u> <u>REQUIRED</u>
1A	457 34501 900	Head Lamp Assembly	1
1	460 34501 900	Head Lamp Lens Unit	1
2	474 34501 200	Head Lamp Bulb Cover	1
3	461 34501 800	Head Lamp Body Complete	1
4	0311 0512	5 X 12mm Screw	2
5	191 34501 200	Head Lamp Bracket	2
6	0311 0625	6 X 22mm Screw	4
7	0431 0615	6mm Spring Washer	4
8	990 21100 141	10 X 14mm Bolt	2
9	0431 1025	10mm Spring Washer	2
10A	458 34501 900	Tail Lamp Assembly	1
10	8251 8000	Tail Lamp Lens	1
11	8253 8000	Tail Lens Packing	1
12	8252 3040	Tail Lamp Bulb	1
13	829 34501 200	Tail Lamp Socket Cord Comp.	1
14	472 34402 200	Tail Lamp Base	1
15	990 11030 300	Screw 3 X 30mm	2
16	475 34501 200	Tail Lamp Bracket	1
17	0121 0410	Bolt 4 X 10mm	3
18	0431 0410	4mm Spring Washer	3
19	0411 0410	4mm Washer	3
20	804 34501 200	Tail Reflector Bracket	
21	799 34501 200	Reflector - Red	2
22	0431 0205	5mm Spring Washer	2
23	991 01050 013	5mm Nut	2
24	0311 0612	6 X 12mm Screw	2
25	0431 0615	6mm Spring Washer	2
26	0411 0613	6mm Washer	2
27	789 34402 200	Grommet	1